

ibidi 細胞培養暨影像觀察耗材

- 德國 [ibidi](#) 公司專利研發特殊塑料材質製造，具有比擬玻璃材質的清晰影像效果與優異的細胞培養特性
- 為細胞實驗帶來前所未有的便利性！讓細胞培養、分析與影像擷取，完美結合在同一個實驗器具上
- 超過 35,000 篇文獻採用，用戶遍及全球 40 多個國家，品質卓越超群



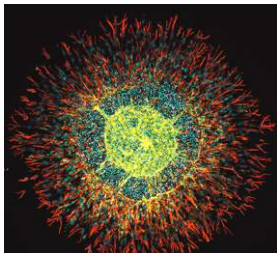
更多資訊



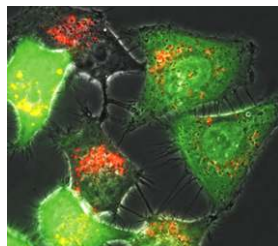
μ-Slide 2 | 4 | 8 | 18 Well

- 可平行測試多種實驗條件 (2, 4, 8, 18)，並呈現高品質的細胞顯微影像。
- 底部厚度符合 #1.5 蓋玻片，影像清晰易觀測，適用於活細胞影像觀察攝影 (live cell imaging)、免疫螢光染色 (immunofluorescence)、細胞轉染 (transfection) 等多種用途。
- ibiTreat 底部經特殊處理，適合各類細胞貼附生長，免去 coating 麻煩。

底部厚度符合 #1.5 蓋玻片，影像清晰易觀測



Spheroid of human intestinal fibroblasts and outgrowth endothelial cells sprouting in a fibrin hydrogel, cultured in μ -Slide 4 Well. Endothelial cells were stained with CD31 (yellow), fibroblasts with vimentin (red), and DNA with DAPI (cyan).



Live cell imaging of rat fibroblasts after 24 hours transfection with pCMV-eGFP. Cells were imaged on μ -Slide 8 Well. Red: Rhodamine-labelled lipoplexes, Green: eGFP.

Product	Cat. No.
μ -Slide 2 Well, ibiTreat, 15 pcs/pk	IB-80286
μ -Slide 4 Well, ibiTreat, 15 pcs/pk	IB-80426
μ -Slide 8 Well, ibiTreat, 15 pcs/pk	IB-80826
μ -Slide 8 Well high, ibiTreat, 15 pcs/pk	IB-80806
μ -Slide 18 Well, ibiTreat, 15 pcs/pk	IB-81816

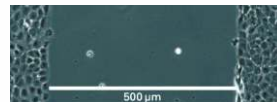
更多品項選擇請洽 [伯森業務專員](#)



Culture-Inserts

- 可輕鬆製造出大小一致的細胞間隙 ($500 \pm 100 \mu\text{m}$)，應用於傷口癒合 (wound healing)、細胞遷移/侵襲 (migration/invasion)、細胞共同培養 (co-cultivation) 等實驗。
- 細胞間隔框架可貼附在任何表面光滑的培養皿 (盤) 中，使用彈性便利。
- 操作簡便，並可精確量化實驗結果，比傳統 Scratch assay 再現性更佳！

Culture-Inserts 可輕鬆製造出大小一致的細胞間隙

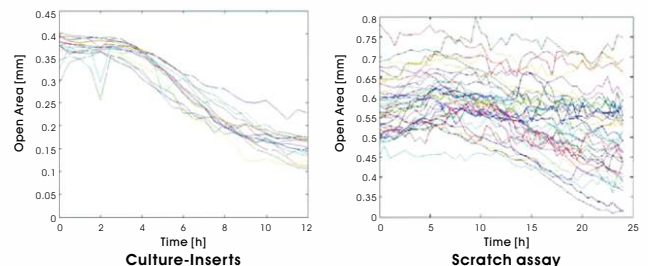


Culture-Insert 2 Well | 3 Well



Culture-Insert 4 Well

Culture-Inserts 的再現性比傳統 Scratch assay 更佳



Product	Cat. No.
25 Culture-Inserts 2 Well for self-insertion	IB-80209
25 Culture-Inserts 3 Well for self-insertion	IB-80369
25 Culture-Inserts 4 Well for self-insertion	IB-80469

更多品項選擇請洽 [伯森業務專員](#)

