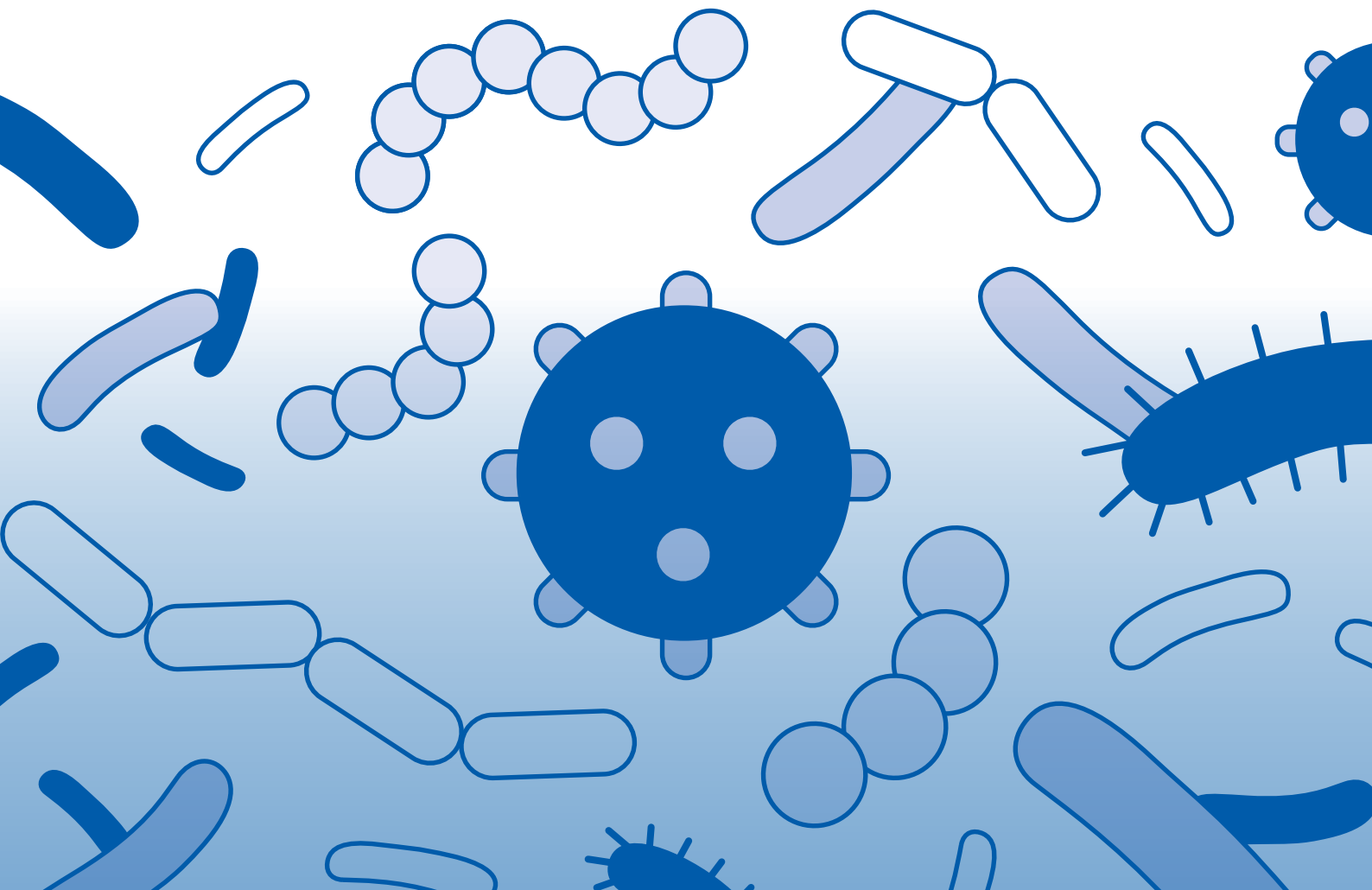


# Microbiology and Infectious Diseases

Product Catalog





## 微生物與傳染病研究工具

傳染病 (infectious diseases) 是由致病性微生物 (pathogenic microorganisms) 感染所引發、擴散的疾病，為全球人口死亡的主要因素之一。COVID-19 武漢肺炎等新興傳染病的出現更是對全球造成重大衝擊！針對與日俱增的微生物與傳染病研究需求，Abcam 提供豐富齊全的研究試劑選擇，包含**新型冠狀病毒 (SARS-CoV-2) 研究工具**以及各類**病毒、細菌、真菌、寄生蟲、原蟲**的免疫偵測抗體、ELISA Kits 與重組蛋白質/胜肽等多種產品。完整產品資訊歡迎洽詢 Abcam 台灣代理 — [伯森生技](#)。

### 目 錄

 <b>Virus</b>	<ul style="list-style-type: none"><li>3 — COVID-19 (SARS-CoV-2)</li><li>9 — Dengue virus</li><li>11 — Ebola virus</li><li>12 — Influenza virus</li><li>20 — Hepatitis viruses</li><li>27 — Herpes simplex virus</li><li>29 — Human herpesvirus</li><li>34 — Human adenovirus</li><li>35 — Human immunodeficiency virus</li><li>38 — Human papillomavirus</li><li>40 — Other viruses</li></ul>	 <b>Yeast</b>	<ul style="list-style-type: none"><li>81 — Saccharomyces cerevisiae</li><li>87 — Schizosaccharomyces pombe</li></ul>
 <b>Bacteria</b>	<ul style="list-style-type: none"><li>52 — Bacillus</li><li>54 — Chlamydia</li><li>55 — Clostridium</li><li>57 — Escherichia coli</li><li>66 — Mycobacteria</li><li>69 — Salmonella</li><li>70 — Staphylococcus</li><li>73 — Streptococcus</li><li>76 — Other bacteria</li></ul>	 <b>Protozoa</b>	<ul style="list-style-type: none"><li>88 — Cryptosporidium parvum</li><li>88 — Giardia lamblia</li><li>88 — Malaria</li><li>88 — Plasmodium aldolase</li><li>89 — Pneumocystis carinii</li><li>89 — Toxoplasma gondii</li></ul>
 <b>Phage</b>	<ul style="list-style-type: none"><li>78 — Enterobacteria phage</li><li>80 — Clostridium botulinum D phage</li><li>80 — Coryneophage beta</li></ul>	 <b>Fungi</b>	<ul style="list-style-type: none"><li>90 — Aspergillus</li><li>91 — Candida albicans</li></ul>
 <b>Phage</b>	<ul style="list-style-type: none"><li>78 — Enterobacteria phage</li><li>80 — Clostridium botulinum D phage</li><li>80 — Coryneophage beta</li></ul>	 <b>Nematode</b>	<ul style="list-style-type: none"><li>92 — Ascaris lumbricoides</li><li>92 — Canine Heartworm</li><li>92 — Toxocara canis</li><li>92 — Trichinella spiralis</li></ul>



Virus

# COVID-19 (SARS-CoV-2)

## SARS-CoV-2 病毒抗體

Product	Application	Cat. No.
Anti-SARS-CoV-2 Spike Glycoprotein S1 antibody [CR3022]	ELISA, Neutralising	<a href="#">ab273073*</a>
Anti-SARS-CoV-2 Spike Glycoprotein S1 antibody [CR3022] - Chimeric	ELISA, Neutralising	<a href="#">ab273074*</a>
Anti-SARS-CoV-2 spike glycoprotein antibody - Coronavirus	ELISA, WB	<a href="#">ab272504</a>
Anti-SARS-CoV-2 spike glycoprotein antibody [H6] - Chimeric	ELISA	<a href="#">ab272854</a>
Anti-SARS-CoV-2 spike glycoprotein antibody [H6] - Chimeric (HRP)	ELISA	<a href="#">ab273169</a>
Anti-SARS-CoV-2 nucleocapsid protein antibody	IHC, WB	<a href="#">ab273167</a>
Anti-SARS-CoV-2 nucleocapsid protein antibody [1A6] - Chimeric	ELISA, WB	<a href="#">ab272852</a>
Anti-SARS-CoV-2 nucleocapsid protein antibody [1A6] - Chimeric (HRP)	ELISA	<a href="#">ab273168</a>
Anti-SARS-CoV-2 envelope protein antibody - Coronavirus	ELISA	<a href="#">ab272503</a>

\*[CR3022] 克隆抗體是目前已知唯一能夠與 SARS-CoV-2 病毒產生交叉反應的 SARS-CoV 中和抗體。該克隆抗體抗原決定位位於 SARS-CoV 和 SARS-CoV-2 病毒保守的 RBD 區域 (PMID: 32245784, 32065055) · 亦即 SARS-CoV 和 SARS-CoV-2 病毒棘蛋白 S1 區 318-510 aa · [CR3022] 克隆抗體的抗原決定位不與 SARS-CoV-2 病毒棘蛋白 RBD-ACE2 受體結合位點重疊 · 目前正在測試研究 [CR3022] 克隆抗體聯合其他克隆抗體 · 用以中和 SARS-CoV-2 病毒的可能性 (PMID: 32226289, 32065055, 32383254) ·

## SARS-CoV 病毒抗體

Product	Application	Cat. No.
Anti-SARS spike glycoprotein S1 antibody [7G12]	IP, WB	<a href="#">ab273436</a>
Anti-SARS spike glycoprotein antibody [1A9]	ELISA, Flow Cyt, ICC/IF, IP, sELISA, WB	<a href="#">ab273433</a>
Anti-SARS spike glycoprotein antibody [3A2] - Coronavirus	Flow Cyt, ICC/IF, WB	<a href="#">ab272420</a>
Anti-SARS spike glycoprotein antibody - C-terminal	ELISA	<a href="#">ab252690</a>
Anti-SARS spike glycoprotein antibody - N-terminal	ELISA	<a href="#">ab252691</a>
Anti-SARS E antibody	WB	<a href="#">ab22055</a>
Anti-SARS E2 antibody [4A6C9] - Coronavirus	ELISA, WB	<a href="#">ab31951</a>
Anti-SARS Nucleoprotein antibody [6H3]	ELISA, ICC/IF, IP, sELISA, WB	<a href="#">ab273434</a>
Anti-SARS Nsp3 antibody - Coronavirus	EM, ICC/IF, IP, WB	<a href="#">ab181620</a>

## SARS-CoV-2 病毒蛋白與胜肽

Product	Sequence	Cat. No.	Note
Recombinant human coronavirus SARS-CoV-2 Spike Glycoprotein RBD (Active)	319 - 541 aa	<a href="#">ab273065</a>	活性蛋白 · C 端 His-tag
Recombinant human coronavirus SARS-CoV-2 Spike Glycoprotein S1 (Active)	16 - 685 aa	<a href="#">ab273068</a>	活性蛋白 · C 端 His-tag
Recombinant Human coronavirus SARS CoV-2 Nucleoprotein (His tag)	1 - 419 aa	<a href="#">ab272107</a>	C 端 His-tag
Recombinant Human coronavirus SARS-CoV-2 Spike Glycoprotein S1 (Fc Chimera)	1 - 674 aa	<a href="#">ab272105</a>	C 端 Fc tag
Recombinant Human coronavirus SARS-CoV-2 Spike Glycoprotein S2 (Fc Chimera)	685 - 1211 aa	<a href="#">ab272106</a>	C 端 Fc tag
Recombinant Human coronavirus SARS-CoV-2 Spike Glycoprotein RBD (Tagged)	319 - 541 aa	<a href="#">ab273066</a>	C 端 Fc tag
Recombinant human coronavirus SARS-CoV-2 Spike Glycoprotein S1 (Active)	16 - 685 aa	<a href="#">ab273067</a>	活性蛋白 · C 端 Fc tag
Human coronavirus SARS-CoV-2 envelope protein peptide	近 N 端 10 個 aa	<a href="#">ab273064</a>	Blocking 應用
Human coronavirus SARS-CoV-2 spike glycoprotein peptide	S 蛋白 C 末端 50 個 aa 內 20 個 aa	<a href="#">ab273063</a>	Blocking 應用

## SARS-CoV-2 病毒抗體快檢試劑

Product	Cat. No.
Novel Coronavirus IgG Antibody Detection Kit (SARS-CoV-2)	<a href="#">ab272243</a>
Novel Coronavirus IgM Antibody Detection Kit (SARS-CoV-2)	<a href="#">ab272244</a>



Novel Coronavirus IgG Antibody Detection Kit (SARS-CoV-2) ([ab272243](#)) is suitable for the qualitative detection of Novel Coronavirus (SARS-CoV-2) IgG antibodies in human serum, plasma, and whole blood. Each cassette is a dry medium that has been coated separately with novel coronavirus N protein ("T" test line) and goat anti-chicken IgY antibody ("C" control line). Two free colloidal gold-labeled antibodies, mouse anti-human IgG (mIgG) and chicken IgY, are in the release pad section. Once diluted serum, plasma, or whole blood is applied to the release pad section, the mIgG antibody will bind to coronavirus IgG antibodies if they are present, forming an IgG-IgG complex. The sample and antibodies will then move across the cassette's medium via capillary action. If coronavirus IgG antibody is present in the sample, the test line (T) will be bound by the IgG-IgG complex and develop color. If there is no coronavirus IgG antibody in the sample, free mIgG will not bind to the test line (T) and no color will develop. The free chicken IgY antibody will bind to the control line (C); this control line should be visible after the detection step as this confirms that the kit is working properly.

## 宿主細胞受體/蛋白酶

Target	Product Type	Product	Cat. No.
<b>ACE2</b> SARS-CoV-2、SARS-CoV 病毒識別的宿主受體	抗體	Anti-ACE2 antibody [EPR4435(2)]	<a href="#">ab108252</a>
	ELISA 試劑套組	Human ACE2 ELISA Kit	<a href="#">ab235649</a>
	ELISA 試劑套組	Mouse ACE2 ELISA Kit	<a href="#">ab213843</a>
	抗體對 (無載體 · 不含 BSA)	Human ACE2 Antibody Pair - BSA and Azide free	<a href="#">ab244135</a>
	蛋白質	Recombinant Human ACE2 protein	<a href="#">ab151852</a>
	胜肽	ACE2 peptide	<a href="#">ab198988</a>
<b>CD147</b> SARS-CoV-2 進入宿主細胞的受體	抗體	Anti-CD147 antibody [EPR18008-8]	<a href="#">ab188190</a>
	ELISA 試劑套組	Human EMMPRIN ELISA Kit	<a href="#">ab219631</a>
	ELISA 試劑套組	Mouse EMMPRIN ELISA Kit	<a href="#">ab205575</a>
<b>TMPRSS2</b> 切割 SARS-CoV-2、SARS-CoV 病毒棘蛋白 · 協助病毒進入宿主細胞	抗體	Anti-TMPRSS2 antibody [EPR3862]	<a href="#">ab109131</a>
	蛋白質	Recombinant Human TMPRSS2 protein	<a href="#">ab112364</a>
<b>Cathepsin B</b> 切割 SARS-CoV-2、SARS-CoV 病毒棘蛋白 · 協助病毒進入宿主細胞	抗體	Anti-Cathepsin B antibody [EPR4323]	<a href="#">ab125067</a>
	酵素活性檢測試劑套組	Cathepsin B Activity Assay Kit (Fluorometric)	<a href="#">ab65300</a>
	蛋白質	Native human Cathepsin B protein	<a href="#">ab90387</a>
	小分子化合物 - inhibitor	E-64d (Aloxistatin), cathepsin B and L inhibitor	<a href="#">ab144048</a>
	小分子化合物 - inhibitor	Z-Phe-Phe-FMK, Cathepsin B and L inhibitor	<a href="#">ab141386</a>
<b>Cathepsin L</b> 切割 SARS-CoV-2、SARS-CoV 病毒棘蛋白 · 協助病毒進入宿主細胞	抗體	Anti-Cathepsin L/MEP antibody	<a href="#">ab103574</a>
	酵素活性檢測試劑套組	Cathepsin L Activity Assay Kit (Fluorometric)	<a href="#">ab65306</a>
	蛋白質	Recombinant Human Cathepsin L/MEP protein (His tag)	<a href="#">ab174030</a>
<b>DPP4/CD26</b> MERS-CoV 病毒識別的宿主受體	抗體	Anti-DPP4 antibody [EPR20819]	<a href="#">ab215711</a>
	ELISA 試劑套組	Human DPP4 (CD26) ELISA Kit	<a href="#">ab252365</a>
	ELISA 試劑套組	Mouse DPP4 ELISA Kit (CD26)	<a href="#">ab264630</a>
	蛋白質	Native human DPP4 protein	<a href="#">ab134443</a>
	小分子化合物 - inhibitor	P32/98, dipeptidyl peptidase IV (DPP4) inhibitor	<a href="#">ab141724</a>
	小分子化合物 - inhibitor	Teneligliptin, DPP-4 inhibitor	<a href="#">ab235551</a>

## 宿主細胞受體/蛋白酶 (continued)

Target	Product Type	Product	Cat. No.
<b>APN/CD13</b> HCoV-229E 病毒識別的宿主受體	抗體	Anti-CD13 antibody [EPR4058]	<a href="#">ab108310</a>
	ELISA 試劑套組	Human CD13 ELISA Kit	<a href="#">ab239427</a>
	蛋白質	human CD13 protein	<a href="#">ab134454</a>

## 相關研究靶點抗體

Product	Cat. No.	Description
Anti-BTK antibody [EPR20445]	<a href="#">ab208937</a>	TNF $\alpha$ 、IL-6、IL-10 和 MCP-1 等多種細胞激素/趨化因子的關鍵調節蛋白
Anti-CD4 antibody [EPR6855]	<a href="#">ab133616</a>	Th 細胞標誌
Anti-CD31 antibody	<a href="#">ab28364</a>	內皮細胞標誌
Anti-CD34 antibody [EP373Y]	<a href="#">ab81289</a>	纖維化與星狀細胞標誌
Anti-CD68 antibody	<a href="#">ab125212</a>	巨噬細胞活化
Anti-Collagen I antibody	<a href="#">ab34710</a>	肺纖維化
Anti-F4/80 antibody [Cl:A3-1] - Macrophage Marker	<a href="#">ab6640</a>	巨噬細胞活化
Anti-IL-1 beta antibody	<a href="#">ab9722</a>	細胞激素風暴
Anti-MMP9 antibody	<a href="#">ab38898</a>	纖維化
Anti-TGF beta 1 antibody	<a href="#">ab92486</a>	細胞激素風暴
Anti-TNF alpha antibody [52B83]	<a href="#">ab1793</a>	細胞激素風暴
Anti-VEGFA antibody [VG-1]	<a href="#">ab1316</a>	細胞激素風暴

## 人類細胞激素 ELISA 檢測試劑套組

Target	Product	Cat. No.	Description
<b>FGF2 (FGF Basic)</b>	Human FGF2 ELISA Kit	<a href="#">ab246531</a>	FGF2、FGF 信號配體，MERS-CoV 病毒感染後上升，以及誘發肺、腎細胞凋亡；在 SARS-CoV-2 病毒感染後上升
<b>G-CSF</b>	Human G-CSF ELISA Kit	<a href="#">ab264627</a>	冠狀病毒感染呼吸道後，刺激顆粒性白血球增殖

## 人類細胞激素 ELISA 檢測試劑套組 (continued)

Target	Product	Cat. No.	Description
<b>GM-CSF</b>	Human GM-CSF ELISA Kit	<a href="#">ab174448</a>	冠狀病毒感染 CNS 後上升；小鼠模型中投以 SARS 病毒抑制藥物利巴韋林後下降；在 SARS-CoV-2 病毒感染後上升
<b>IFN-<math>\gamma</math></b>	Human IFN gamma High Sensitivity ELISA Kit	<a href="#">ab236895</a>	Th1 發炎因子，在 SARS-CoV、MERS-CoV、SARS-CoV-2 病毒感染後上升
<b>IL-1<math>\beta</math></b>	Human IL-1 beta ELISA Kit	<a href="#">ab214025</a>	發炎因子，在 SARS、SARS-CoV-2 病毒感染後上升
<b>IL-1<math>\alpha</math></b>	Human IL-1 $\alpha$ ELISA Kit	<a href="#">ab211650</a>	抑炎因子，在 SARS 病毒急性重症患者中急劇上升；在 SARS-CoV-2 病毒感染後上升
<b>IL-4</b>	Human IL-4 ELISA Kit	<a href="#">ab215089</a>	Th2 發炎因子，在 SARS 病毒感染後無顯著差異；在 SARS-CoV-2 病毒感染後上升
<b>IL-7</b>	Human IL-7 ELISA Kit	<a href="#">ab270218</a>	發炎因子，CoV 病毒感染 CNS 後維持淋巴組織中 CD8+ T 細胞穩定和存活；在 SARS-CoV-2 病毒感染後上升
<b>IL-8</b>	Human IL-8 ELISA Kit	<a href="#">ab214030</a>	嗜中性白血球趨化因子，在 SARS 病毒感染後上升，糖皮質激素處理後下降；在 SARS-CoV-2 病毒感染後上升
<b>IL-9</b>	Human IL-9 ELISA Kit	<a href="#">ab242237</a>	發炎因子，在病毒誘導重症肝損傷模型中，小鼠肝炎病毒 strain 3 感染 48-72 小時後表達上升
<b>IL-10</b>	Human IL-10 ELISA Kit (Interleukin-10)	<a href="#">ab185986</a>	Th2 發炎因子，在 SARS 病毒感染後無顯著差異；在 SARS-CoV-2 病毒感染後上升
<b>IP-10</b>	Human IP-10 ELISA Kit	<a href="#">ab173194</a>	Th1 趨化因子，在 SARS 病毒感染後上升，糖皮質激素處理後下降；SARS-CoV-2 病毒感染後上升
<b>MCP-1</b>	Human MCP-1 ELISA Kit	<a href="#">ab179886</a>	趨化因子，在 SARS 病毒感染後上升，糖皮質激素處理後下降
<b>MIP1<math>\alpha</math></b>	Human MIP1 $\alpha$ ELISA Kit	<a href="#">ab214569</a>	SARS-CoV-2 病毒感染後上升
<b>MIP1<math>\beta</math></b>	Human MIP1 beta ELISA Kit (CCL4)	<a href="#">ab100597</a>	HCoV-229E 病毒感染上呼吸道後分泌；在 SARS-CoV-2 病毒感染後上升
<b>PDGF BB</b>	Human PDGF BB ELISA Kit	<a href="#">ab184860</a>	在肺炎支原體引起的肺炎中上升；在 SARS-CoV-2 病毒感染後上升
<b>TNF<math>\alpha</math></b>	Human TNF alpha ELISA Kit	<a href="#">ab181421</a>	發炎因子，在 SARS 病毒感染後無顯著差異；在 SARS-CoV-2 病毒感染後上升
<b>VEGF</b>	Human VEGF ELISA Kit	<a href="#">ab222510</a>	生長因子，誘導內皮細胞增殖、促進增殖、抑制凋亡、誘導血管通透，Intraocular CoV 病毒感染後在視網膜退變期表達上升，在 SARS-CoV-2 病毒感染後上升

## 人類細胞激素活性重組蛋白

Target	Product	Cat. No.	Description
IFN- $\gamma$	Recombinant Human Interferon gamma protein (Active)	<a href="#">ab259377</a>	<b>Purity:</b> $\geq 95\%$ SDS-PAGE; $\geq 95\%$ HPLC
IL-1 $\beta$	Recombinant human IL-1 beta protein (Active)	<a href="#">ab259387</a>	<b>Expression system:</b> HEK 293 cells
IL-6	Recombinant human IL-6 protein (Active)	<a href="#">ab259381</a>	<b>Endotoxin level:</b> $< 0.005$ Eu/ $\mu$ g
IL-7	Recombinant human IL-7 protein (Active)	<a href="#">ab259382</a>	<b>Carrier free (PBS only):</b> Yes
IL-12	Recombinant human IL-12 p70 protein (Active)	<a href="#">ab259418</a>	<b>Reconstitution:</b> PBS
TNF $\alpha$	Recombinant human TNF alpha protein (Active)	<a href="#">ab259410</a>	



# Dengue virus

## Dengue virus

Target	Product	Application	Cat. No.
Dengue virus IgG	Human Anti-Dengue virus IgG ELISA Kit	ELISA	<a href="#">ab108728</a>
Dengue virus IgM	Human Anti-Dengue virus IgM ELISA Kit	ELISA	<a href="#">ab108729</a>
Dengue virus IgM	Dengue Virus IgM ELISA kit ( $\mu$ -capture)	ELISA	<a href="#">ab247193</a>

## Dengue virus 1 Brazil/97-11/1997

Product	Application	Cat. No.
Anti-Flavivirus E-glycoprotein antibody [HF5-3/D5-3/B10-2]	ICC/IF, WB	<a href="#">ab214330</a>
Anti-Flavivirus E-glycoprotein antibody [HF8-1/C1-5/6/D2]	ICC/IF, WB	<a href="#">ab214331</a>
Anti-Flavivirus E-glycoprotein antibody [DM4/4/D6/5]	ICC/IF	<a href="#">ab214332</a>
Anti-Flavivirus E-glycoprotein antibody [HF8-2/B2-2/E10]	ICC/IF, sELISA, WB	<a href="#">ab214333</a>
Anti-Flavivirus E-glycoprotein antibody [HF8-4/C6-6/A9]	ICC/IF, sELISA, WB	<a href="#">ab214334</a>
Anti-Flavivirus E-glycoprotein antibody [HF8-1/C1-6/E12]	ELISA, ICC/IF, sELISA, WB	<a href="#">ab214335</a>
Anti-Flavivirus E-glycoprotein antibody [HF8-3/D5-10/6/A6]	ICC/IF, sELISA, WB	<a href="#">ab214336</a>

## Dengue virus 2 Thailand/16681/84

Product	Application	Cat. No.
Anti-Dengue Virus E glycoprotein antibody [DE1]	Dot, ELISA, ICC/IF	<a href="#">ab41349</a>
Anti-Dengue Virus E glycoprotein antibody [DE2]	ELISA, ICC/IF	<a href="#">ab41696</a>
Anti-Dengue Virus NS1 glycoprotein antibody [DN1]	ICC/IF, IP, WB	<a href="#">ab41490</a>
Anti-Dengue Virus NS1 glycoprotein antibody [DN3]	ICC/IF, WB	<a href="#">ab41616</a>
Anti-Dengue Virus NS1 glycoprotein antibody [DN2]	ICC/IF, WB	<a href="#">ab41623</a>
Anti-Dengue Virus NS1 glycoprotein antibody [OB4.C11.D10.B8]	ELISA	<a href="#">ab253230</a>
Anti-Dengue Virus NS1 glycoprotein antibody [JE1.C10.H2.A9]	ELISA	<a href="#">ab253231</a>

## Dengue virus 2 Thailand/16681/84 (continued)

Product	Application	Cat. No.
Anti-Dengue Virus NS1 glycoprotein antibody [CC6.BC5.D8]	ELISA	<a href="#">ab253232</a>
Anti-Dengue Virus NS1 glycoprotein antibody [FB10.C12.E5.E9]	ELISA	<a href="#">ab253233</a>

## Dengue virus 2 Peru/IQT2913/1996

Product	Application	Cat. No.
Recombinant Dengue virus 2 Dengue Virus 2 envelope protein	SDS-PAGE	<a href="#">ab180271</a>

## Dengue virus 3 Sri Lanka/1266/2000

Product	Application	Cat. No.
Anti-Dengue Virus 1+2+3+4 antibody [D1-11 (3)]	Dot, ELISA, WB	<a href="#">ab9202</a>
Anti-Dengue Virus 1+2+3+4 antibody	ICC/IF	<a href="#">ab26837</a>
Anti-Dengue Virus 1+2+3+4 antibody [BDI419]	Dot, ELISA	<a href="#">ab252707</a>

## Dengue virus 4 Dominica/814669/1981

Product	Application	Cat. No.
Recombinant Dengue Virus 4 NS1 glycoprotein	ELISA, SDS-PAGE	<a href="#">ab181957</a>

# Ebola virus

## Ebola virus - Eckron (Zaire, 1976)

Product	Application	Cat. No.
Anti-Pre-small/secreted glycoprotein antibody	WB	<a href="#">ab225680</a>

## Ebola virus - Gabon (1994-1997)

Product	Application	Cat. No.
Recombinant VP24 protein (Tagged)	SDS-PAGE	<a href="#">ab267978</a>

## Ebola virus - Mayinga, Zaire, 1976

Product	Application	Cat. No.
Recombinant Envelope Glycoprotein (His tag)	SDS-PAGE	<a href="#">ab220456</a>
Recombinant Envelope Glycoprotein (His tag)	ELISA, SDS-PAGE, WB	<a href="#">ab230280</a>

## Ebola virus - Zaire (1995)

Product	Application	Cat. No.
Recombinant Minor nucleoprotein VP30 (His tag)	SDS-PAGE	<a href="#">ab238387</a>
Recombinant Polymerase cofactor VP35 protein (Tagged)	MS, SDS-PAGE	<a href="#">ab238384</a>
Recombinant Polymerase cofactor VP35 protein (Tagged)	SDS-PAGE	<a href="#">ab239556</a>
Recombinant RNA-directed RNA polymerase L protein (Tagged)	SDS-PAGE	<a href="#">ab238380</a>
Recombinant Zaire ebolavirus Super small secreted glycoprotein	SDS-PAGE	<a href="#">ab267854</a>

# Influenza virus

## Influenza A virus

Product	Application	Cat. No.
Human Anti-Influenza virus A IgA ELISA Kit	ELISA	<a href="#">ab108743</a>
Human Anti-Influenza virus A IgG ELISA Kit	ELISA	<a href="#">ab108745</a>
Human Anti-Influenza virus A IgM ELISA Kit	ELISA	<a href="#">ab108747</a>

## Influenza A virus (A/Aichi/2/1968(H3N2))

Product	Application	Cat. No.
Recombinant Influenza A H3 (H3N2) protein	SDS-PAGE	<a href="#">ab124562</a>
HRP Anti-HA tag antibody	ELISA, WB	<a href="#">ab1190</a>
FITC Anti-HA tag antibody	ICC/IF, WB	<a href="#">ab1208</a>
Anti-HA tag antibody [4C12]	ChIP, ICC/IF, IP, WB	<a href="#">ab1424</a>
Anti-HA tag antibody - ChIP Grade	ChIP, ChIP/Chip, ELISA, Flow Cyt, ICC, ICC/IF, IP, WB	<a href="#">ab9110</a>
Anti-HA tag antibody	ELISA, WB	<a href="#">ab9111</a>
Anti-HA tag antibody	WB	<a href="#">ab13834</a>
Anti-HA tag antibody [HA.C5]	ICC, ICC/IF, IP, WB	<a href="#">ab18181</a>
Anti-HA tag antibody	ELISA, ICC/IF, WB	<a href="#">ab20084</a>
Biotin Anti-HA tag antibody	ELISA, WB	<a href="#">ab26228</a>
Anti-HA tag antibody [HA-7]	ELISA, ICC/IF, IP, WB	<a href="#">ab49969</a>
PE Anti-HA tag antibody [16B12]	Flow Cyt	<a href="#">ab72479</a>
PE Anti-HA tag antibody	Flow Cyt	<a href="#">ab72564</a>
Alkaline Phosphatase Anti-HA tag antibody [16B12]	WB	<a href="#">ab81656</a>
PerCP Anti-HA tag antibody [16B12]	Flow Cyt	<a href="#">ab117491</a>
DyLight® 550 Anti-HA tag antibody [16B12]	Flow Cyt, ICC/IF	<a href="#">ab117502</a>

## Influenza A virus (A/Aichi/2/1968(H3N2)) (continued)

Product	Application	Cat. No.
DyLight® 650 Anti-HA tag antibody [16B12]	Flow Cyt, ICC/IF	<a href="#">ab117515</a>
HRP Anti-HA tag antibody	WB	<a href="#">ab128131</a>
Anti-HA tag antibody	IHC-P, WB	<a href="#">ab134028</a>
Anti-HA tag antibody	ICC/IF, IP, WB	<a href="#">ab137838</a>
Biotin Anti-HA tag antibody [2-2.2.14]	IP, WB	<a href="#">ab173825</a>
HRP Anti-HA tag antibody [2-2.2.14]	WB	<a href="#">ab173826</a>
Anti-HA tag antibody [EPR4095]	WB	<a href="#">ab182009</a>
HRP Anti-HA tag antibody	WB	<a href="#">ab183884</a>
Anti-HA tag antibody	ELISA, ICC, IP, WB	<a href="#">ab184643</a>
Europium Anti-HA tag antibody [16B12]	FRET	<a href="#">ab187915</a>
Anti-HA tag antibody	ELISA, WB	<a href="#">ab190108</a>
Agarose Anti-HA tag antibody	IP	<a href="#">ab214758</a>
Anti-HA tag antibody	WB	<a href="#">ab215069</a>
HRP Anti-HA tag antibody	ICC, WB	<a href="#">ab215070</a>
Agarose Anti-HA tag antibody	ICC, WB	<a href="#">ab215112</a>
Anti-HA tag antibody [EPR22819-101]	Flow Cyt, ICC/IF, IP, WB	<a href="#">ab236632</a>
Anti-HA tag antibody [EPR4095] - BSA and Azide free	WB	<a href="#">ab238998</a>
Anti-HA tag antibody [EPR22819-101] - BSA and Azide free	Flow Cyt, ICC/IF, IP, WB	<a href="#">ab256483</a>

## Influenza A virus (A/Beijing/353/1989(H3N2))

Product	Application	Cat. No.
Anti-Influenza A Virus Nucleoprotein antibody [AA5H]	ICC/IF, IHC-P	<a href="#">ab20343</a>
Anti-Influenza A Virus Nucleoprotein antibody [9G8]	ELISA, ICC/IF, WB	<a href="#">ab43821</a>
Anti-Influenza A Virus Nucleoprotein antibody [F8]	ELISA, IHC-Fr	<a href="#">ab67428</a>
Anti-Influenza A Virus Nucleoprotein antibody	ELISA	<a href="#">ab91648</a>
Anti-Influenza A Virus Nucleoprotein antibody [C43]	ELISA, ICC/IF, WB	<a href="#">ab128193</a>

## Influenza A virus (A/Beijing/353/1989(H3N2)) (continued)

Product	Application	Cat. No.
HRP Anti-Influenza A Virus Nucleoprotein antibody [C43]	ELISA, ICC, IHC, WB	<a href="#">ab176837</a>
FITC Anti-Influenza A Virus Nucleoprotein antibody [D67J]	Flow Cyt	<a href="#">ab210526</a>
Recombinant Influenza A Influenza A Virus Nucleoprotein (His tag)	MS, SDS-PAGE	<a href="#">ab224859</a>
Anti-Influenza A Virus Nucleoprotein antibody [AA5H]	ICC/IF	<a href="#">ab252754</a>

## Influenza A virus (A/Chicken/Hong Kong/715.5/01 (H5N1))

Product	Application	Cat. No.
Anti-Avian Influenza Matrix Protein I antibody	ICC/IF, WB	<a href="#">ab25918</a>
Anti-Avian Influenza Matrix Protein I antibody	WB	<a href="#">ab25919</a>

## Influenza A virus (A/chicken/Scotland/1959(H5N1))

Product	Application	Cat. No.
Anti-Influenza A virus (H5N1/HA1) antibody [2B7]	ELISA, WB	<a href="#">ab135382</a>
Anti-HA1(H5N1) antibody [2B7]	WB	<a href="#">ab210953</a>
Recombinant Influenza A virus (H5N1/HA1) protein (His tag)	SDS-PAGE	<a href="#">ab217654</a>
Recombinant influenza a HA1 (H5N1) protein (Active)	ELISA, SDS-PAGE	<a href="#">ab219879</a>

## Influenza A virus (A/duck/Hong Kong/64/76(H3))

Product	Application	Cat. No.
Anti-Avian Influenza A Hemagglutinin 3 antibody	ELISA, WB	<a href="#">ab62485</a>

## Influenza A virus (A/duck/Pennsylvania/1/1969(H6N1))

Product	Application	Cat. No.
Anti-Avian Influenza Nucleoprotein antibody	ELISA, ICC/IF	<a href="#">ab22285</a>
Anti-Avian Influenza Nucleoprotein antibody	WB	<a href="#">ab25921</a>

## Influenza A virus (A/goose/Guangdong/1/1996(H5N1))

Product	Application	Cat. No.
Anti-Avian Influenza A Nonstructural 2 antibody	ELISA	<a href="#">ab45418</a>
Avian Influenza A Nonstructural 2 peptide	BL	<a href="#">ab51480</a>

## Influenza A virus (A/Hickox/1940(H1N1))

Product	Application	Cat. No.
DyLight® 488 Anti-Hemagglutinin antibody [16B12]	Flow Cyt, ICC/IF	<a href="#">ab117488</a>
DyLight® 488 Anti-Hemagglutinin antibody	ICC/IF	<a href="#">ab117493</a>
HRP Anti-Hemagglutinin antibody	ELISA, WB	<a href="#">ab190060</a>
Anti-Hemagglutinin antibody	WB	<a href="#">ab225951</a>
Recombinant Influenza A Hemagglutinin protein	SDS-PAGE	<a href="#">ab217659</a>
Recombinant Influenza A Hemagglutinin protein (His tag)	SDS-PAGE	<a href="#">ab225645</a>
Recombinant Influenza A Hemagglutinin protein (Active)	ELISA, SDS-PAGE	<a href="#">ab174043</a>
Recombinant Influenza A Hemagglutinin protein (Active)	FuncS, SDS-PAGE, WB	<a href="#">ab233591</a>

## Influenza A virus (A/Korea/426/1968(H2N2))

Product	Application	Cat. No.
Anti-Influenza A Virus M2 Protein antibody [14C2]	Flow Cyt, ICC, ICC/IF, Inhibition, IP, WB	<a href="#">ab5416</a>
Anti-Influenza A Virus M2 Protein antibody	ELISA, WB	<a href="#">ab56086</a>
Anti-Influenza A Virus M2 Protein antibody	WB	<a href="#">ab94925</a>

## Influenza A virus (A/mallard/Ohio/556/1987(H5N9))

Product	Application	Cat. No.
Anti-Avian Influenza A Hemagglutinin antibody	ELISA, WB	<a href="#">ab21297</a>
Anti-Avian Influenza A Hemagglutinin antibody	ELISA, WB	<a href="#">ab62490</a>
Anti-Avian Influenza A Hemagglutinin antibody	ELISA, WB	<a href="#">ab62587</a>

## Influenza A virus (A/mallard/Ohio/556/1987(H5N9)) (continued)

Product	Application	Cat. No.
Recombinant Avian Influenza A Hemagglutinin protein	SDS-PAGE	<a href="#">ab217663</a>

## Influenza A virus (A/Puerto Rico/8/1934(H1N1))

Target	Product	Application	Cat. No.
<b>Avian Influenza A Neuraminidase</b>	Anti-Avian Influenza A Neuraminidase antibody	ELISA	<a href="#">ab21305</a>
	Anti-Avian Influenza A Neuraminidase antibody - N-terminal	ELISA	<a href="#">ab191862</a>
	Recombinant Influenza A Avian Influenza A Neuraminidase protein (His tag)	SDS-PAGE	<a href="#">ab219893</a>
<b>Avian Influenza A Nonstructural 1</b>	Anti-Avian Influenza A Nonstructural 1 antibody	ELISA	<a href="#">ab45417</a>
	Avian Influenza A Nonstructural 1 peptide	BL	<a href="#">ab51477</a>
<b>H1N1 Influenza A virus Nucleocapsid protein</b>	Anti-H1N1 Influenza A virus Nucleocapsid protein antibody	ELISA, ICC/IF, WB	<a href="#">ab104870</a>
	Anti-H1N1 Influenza A virus Nucleocapsid protein antibody	ICC/IF	<a href="#">ab106485</a>
<b>Influenza A Nonstructural Protein 1</b>	Anti-Influenza A Nonstructural Protein 1 antibody	ELISA	<a href="#">ab91642</a>
<b>Influenza A Virus</b>	Anti-Influenza A Virus antibody	ICC/IF, IHC-P	<a href="#">ab20841</a>
	FITC Anti-Influenza A Virus antibody	ICC/IF, IHC-P	<a href="#">ab20388</a>
	Biotin Anti-Influenza A Virus antibody	ELISA, ICC/IF	<a href="#">ab20351</a>
	Biotin Anti-Influenza A Virus antibody	ELISA	<a href="#">ab20513</a>
	Recombinant Influenza A Virus protein (His tag)	SDS-PAGE	<a href="#">ab228324</a>
<b>Influenza A Virus Hemagglutinin</b>	Anti-Influenza A Virus Hemagglutinin antibody [AT1B7]	ELISA, WB	<a href="#">ab139361</a>
	Anti-Influenza A Virus Hemagglutinin antibody [1.B.408]	ELISA, ICC, ICC/IF, Inhibition	<a href="#">ab119966</a>
	Recombinant Influenza A Virus Hemagglutinin protein	SDS-PAGE	<a href="#">ab124596</a>
	Recombinant Influenza A Virus Hemagglutinin protein (His tag)	SDS-PAGE	<a href="#">ab256439</a>



## Influenza A virus (A/Puerto Rico/8/1934(H1N1)) (continued)

Target	Product	Application	Cat. No.
<b>Influenza A Virus Hemagglutinin H1</b>	Anti-Influenza A Virus Hemagglutinin H1 antibody	ELISA, WB	<a href="#">ab91531</a>
	Recombinant Influenza A Virus Hemagglutinin H1 protein (His tag)	SDS-PAGE	<a href="#">ab217651</a>
<b>Influenza A Virus Nucleoprotein</b>	Anti-Influenza A Virus Nucleoprotein antibody [AA5H]	ICC/IF, IHC-P	<a href="#">ab20343</a>
	Anti-Influenza A Virus Nucleoprotein antibody [9G8]	ELISA, ICC/IF, WB	<a href="#">ab43821</a>
	Anti-Influenza A Virus Nucleoprotein antibody [F8]	ELISA, IHC-Fr	<a href="#">ab67428</a>
	Anti-Influenza A Virus Nucleoprotein antibody	ELISA	<a href="#">ab91648</a>
	Anti-Influenza A Virus Nucleoprotein antibody [C43]	ELISA, ICC/IF, WB	<a href="#">ab128193</a>
	HRP Anti-Influenza A Virus Nucleoprotein antibody [C43]	ELISA, ICC, IHC, WB	<a href="#">ab176837</a>
	FITC Anti-Influenza A Virus Nucleoprotein antibody [D67J]	Flow Cyt	<a href="#">ab210526</a>
	Recombinant Influenza A Influenza A Virus Nucleoprotein (His tag)	MS, SDS-PAGE	<a href="#">ab224859</a>
	Anti-Influenza A Virus Nucleoprotein antibody [AA5H]	ICC/IF	<a href="#">ab252754</a>
<b>Matrix protein 1</b>	Anti-Matrix protein 1 antibody	ELISA, ICC/IF	<a href="#">ab20910</a>
	HRP Anti-Matrix protein 1 antibody	ELISA, ICC/IF, WB	<a href="#">ab21008</a>
	Anti-Matrix protein 1 antibody [GA2B]	ICC/IF, IHC-P, WB	<a href="#">ab22396</a>
	Recombinant Matrix protein 1 (His tag)	SDS-PAGE	<a href="#">ab217650</a>

## Influenza A virus (A/turkey/Wisconsin/1/1966(H9N2))

Product	Application	Cat. No.
Anti-Influenza A H9N2 antibody	ELISA	<a href="#">ab31674</a>
Recombinant Influenza A HA1 (H9N2) protein (His tag)	SDS-PAGE	<a href="#">ab219897</a>

## Influenza A virus (A/X-31(H3N2))

Product	Application	Cat. No.
Recombinant Influenza A Polymerase acidic protein (His tag)	MS, SDS-PAGE	<a href="#">ab239539</a>

## Influenza A virus (Strain California/07/2009/H1N1)

Product	Application	Cat. No.
Recombinant Influenza A Hemagglutinin protein (His tag) Strain California/07/2009/H1N1	SDS-PAGE	<a href="#">ab217662</a>

## Influenza A virus (Strain Egypt/N03072/2010)

Product	Application	Cat. No.
Recombinant Influenza A Hemagglutinin protein (His tag) Strain Egypt/N03072/2010	SDS-PAGE	<a href="#">ab217649</a>
Recombinant Influenza A Hemagglutinin protein (His tag) Strain Egypt/N03072/2010	SDS-PAGE	<a href="#">ab217653</a>

## Influenza A virus (Strain Hong Kong/33982/2009)

Product	Application	Cat. No.
Recombinant Influenza A Hemagglutinin protein (His tag) Strain Hong Kong/33982/2009	SDS-PAGE	<a href="#">ab217638</a>
Recombinant Influenza A Hemagglutinin protein (His tag) Strain Hong Kong/33982/2009	SDS-PAGE	<a href="#">ab217656</a>

## Influenza A virus (Strain Hubei/1/2010)

Product	Application	Cat. No.
Recombinant Influenza A Hemagglutinin protein (His tag) Strain Hubei/1/2010	SDS-PAGE	<a href="#">ab217655</a>

## Influenza A virus (Strain Perth/16/09)

Product	Application	Cat. No.
Recombinant Influenza A Hemagglutinin protein (His tag) Strain Perth/16/09	SDS-PAGE	<a href="#">ab217652</a>

## Influenza B virus

Product	Application	Cat. No.
Human Anti-Influenza virus B IgA ELISA Kit	ELISA	<a href="#">ab108744</a>
Human Anti-Influenza virus B IgG ELISA Kit	ELISA	<a href="#">ab108746</a>
Human Anti-Influenza virus B IgM ELISA Kit	ELISA	<a href="#">ab108748</a>

## Influenza B virus (B/Lee/1940)

Product	Application	Cat. No.
Anti-Influenza B virus Glycoprotein NB antibody	ELISA, IHC-P, WB	<a href="#">ab97925</a>
Anti-Influenza B Virus Nucleoprotein antibody [B017]	ELISA, ICC/IF, WB	<a href="#">ab20711</a>
Recombinant Influenza B Virus Nucleoprotein (Tagged)	SDS-PAGE	<a href="#">ab225599</a>
Recombinant Influenza B Virus Nucleoprotein (His tag)	SDS-PAGE	<a href="#">ab238364</a>
Recombinant Non-structural protein 1 (His tag)	SDS-PAGE	<a href="#">ab237795</a>

## Influenza B virus (B/Panama/45/1990)

Product	Application	Cat. No.
Recombinant Influenza B Virus Hemagglutinin protein (His tag)	SDS-PAGE	<a href="#">ab217658</a>

## Influenza B virus (B/Singapore/222/79)

Product	Application	Cat. No.
Biotin Anti-Influenza B Virus antibody	ICC/IF	<a href="#">ab20055</a>
HRP Anti-Influenza B Virus antibody	ELISA, WB	<a href="#">ab20039</a>

# Hepatitis viruses

## Human hepatitis A virus Hu/Northern Africa/MBB/1978

Product	Application	Cat. No.
Anti-Hepatitis A Virus antibody	ELISA	<a href="#">ab20269</a>
Anti-Hepatitis A Virus antibody	ELISA	<a href="#">ab68579</a>
Recombinant Hepatitis A Virus protein	ELISA, SDS-PAGE	<a href="#">ab49012</a>
Recombinant Hepatitis A Virus protein	ELISA, SDS-PAGE, WB	<a href="#">ab54098</a>
Recombinant Hepatitis A Virus protein	ELISA, SDS-PAGE, WB	<a href="#">ab54100</a>

## Hepatitis B virus adr4

Product	Application	Cat. No.
Anti-Hepatitis B Virus X antigen antibody [3F6-G10]	ELISA, IHC-Fr, IHC-P	<a href="#">ab235</a>
Anti-Hepatitis B Virus X antigen antibody [X36C]	ELISA, IHC-P, IP, WB	<a href="#">ab2741</a>
Anti-Hepatitis B Virus X antigen antibody	ELISA, IP, WB	<a href="#">ab39716</a>
Recombinant Hepatitis B virus Protein X	ELISA, SDS-PAGE, WB	<a href="#">ab203540</a>

## Hepatitis B virus adw/Japan/Nishioka/1983

Product	Application	Cat. No.
Anti-Hepatitis B Virus Surface Antigen antibody [B1929M]	ELISA	<a href="#">ab252714</a>
FITC Anti-Hepatitis B Virus Surface Antigen antibody	ICC/IF	<a href="#">ab21021</a>
HRP Anti-Hepatitis B Virus Surface Antigen antibody	ELISA	<a href="#">ab19990</a>
Anti-Hepatitis B Virus Surface Antigen antibody	ELISA	<a href="#">ab19979</a>
Anti-Hepatitis B Virus Surface Antigen antibody [3E7], prediluted	IHC-Fr, IHC-P	<a href="#">ab859</a>
Anti-Hepatitis B Virus Surface Antigen antibody [HB3]	ELISA, ICC	<a href="#">ab8256</a>
Anti-Hepatitis B Virus Surface Antigen antibody [HB5]	ELISA, ICC	<a href="#">ab8333</a>
Anti-Hepatitis B Virus Surface Antigen antibody [S14]	ELISA, ICC/IF, IHC-FoFr, IHC-Fr, IP	<a href="#">ab8636</a>

## Hepatitis B virus adw2/Rutter/1979

Product	Application	Cat. No.
Anti-Hepatitis B Virus Surface Antigen (Ad/Ay) antibody	ELISA	<a href="#">ab9193</a>
HRP Anti-Hepatitis B Virus Surface Antigen (Ad/Ay) antibody	ELISA	<a href="#">ab20878</a>
FITC Anti-Hepatitis B Virus Surface Antigen (Ad/Ay) antibody	ELISA	<a href="#">ab20930</a>
FITC Anti-Hepatitis B Virus Surface Antigen (Ad/Ay) antibody	ICC	<a href="#">ab32914</a>
HRP Anti-Hepatitis B Virus Surface Antigen (Ad/Ay) antibody	ELISA	<a href="#">ab34553</a>
Anti-Hepatitis B Virus Surface Antigen (Ad/Ay) antibody [HB24]	ELISA	<a href="#">ab54247</a>
Biotin Anti-Hepatitis B Virus Surface Antigen (Ad/Ay) antibody	ELISA, ICC/IF, IHC-Fr, WB	<a href="#">ab68518</a>
Anti-Hepatitis B Virus Surface Antigen (Ad/Ay) antibody	ELISA	<a href="#">ab68519</a>
Biotin Anti-Hepatitis B Virus Surface Antigen (Ad/Ay) antibody	ELISA, ICC/IF, IHC-Fr, WB	<a href="#">ab68520</a>

## Hepatitis B virus ayw/France/Tiollais/1979

Product	Application	Cat. No.
Anti-Hepatitis B Virus Core Antigen antibody [C1]	ELISA, ICC/IF, IHC-Fr, IHC-P, IP, WB	<a href="#">ab8637</a>
Anti-Hepatitis B Virus Core Antigen antibody [14E11]	ELISA, ICC/IF, IHC-FoFr, IHC-Fr, IHC-P, IP, WB	<a href="#">ab8638</a>
Anti-Hepatitis B Virus Core Antigen antibody [10E11]	ELISA, ICC/IF, IHC-Fr, IHC-P, IP, WB	<a href="#">ab8639</a>
Anti-Hepatitis B Virus Core Antigen antibody [13A9]	ELISA, IP, WB	<a href="#">ab18684</a>
Recombinant Hepatitis B Virus Core Antigen protein	ELISA, SDS-PAGE, WB	<a href="#">ab49013</a>
Recombinant Hepatitis B Virus Core Antigen protein	ELISA, WB	<a href="#">ab49014</a>
Anti-Hepatitis B Virus Core Antigen antibody	IHC-Fr, IHC-P	<a href="#">ab115992</a>
Recombinant Hepatitis B Virus Core Antigen protein	ELISA, SDS-PAGE	<a href="#">ab119441</a>
Recombinant Hepatitis B Virus Core Antigen protein	ELISA, SDS-PAGE, WB	<a href="#">ab119471</a>
Anti-Hepatitis B Virus Core Antigen antibody, prediluted	IHC-Fr, IHC-P	<a href="#">ab124640</a>

## Hepatitis C virus (isolate 1)

Product	Application	Cat. No.
Recombinant Hepatitis C Virus Core 1a protein (denatured)	SDS-PAGE	<a href="#">ab183174</a>
Anti-Hepatitis C Virus E2 antibody	ELISA, WB	<a href="#">ab20044</a>
Anti-Hepatitis C Virus E2 antibody	ELISA, WB	<a href="#">ab54556</a>
Recombinant Human Hepatitis C Virus E2 protein (denatured)	SDS-PAGE	<a href="#">ab180302</a>
Recombinant Hepatitis C virus Hepatitis C Virus E2 protein (His tag)	SDS-PAGE	<a href="#">ab214832</a>
Anti-Hepatitis C Virus genotype 1a NS5 antibody	ELISA, WB	<a href="#">ab20773</a>
Recombinant Hepatitis C Virus genotype 1a NS5 protein	ELISA, Flow Cyt, WB	<a href="#">ab49033</a>
Anti-Hepatitis C Virus NS3 antibody [H23]	ELISA, IHC-P, WB	<a href="#">ab13830</a>
Anti-Hepatitis C Virus NS3 antibody	ELISA, ICC/IF, WB	<a href="#">ab21124</a>
Recombinant Hepatitis C Virus NS3 protein	ELISA, Flow Cyt, SDS-PAGE, WB	<a href="#">ab49022</a>
Recombinant Hepatitis C Virus NS3 protein	ELISA, Flow Cyt, SDS-PAGE, WB	<a href="#">ab49024</a>
Recombinant Hepatitis C Virus NS3 protein	ELISA, Flow Cyt, SDS-PAGE, WB	<a href="#">ab49025</a>
Recombinant Hepatitis C Virus NS3 protein	FuncS	<a href="#">ab84346</a>
Recombinant Hepatitis C Virus NS4A +B protein (FITC)	ELISA, WB	<a href="#">ab78143</a>

## Hepatitis C virus (isolate 6a33)

Product	Application	Cat. No.
Anti-Hepatitis C Virus NS5a antibody [H26]	ELISA, ICC/IF, WB	<a href="#">ab13833</a>
Recombinant Hepatitis C Virus NS5a protein	MS, SDS-PAGE	<a href="#">ab180321</a>

## Hepatitis C virus (isolate BEBE1)

Product	Application	Cat. No.
Recombinant Hepatitis C Virus NS5 protein	ELISA, Flow Cyt, WB	<a href="#">ab49032</a>

## Hepatitis C virus (isolate BK)

Product	Application	Cat. No.
Anti-Hepatitis C Virus Core 1b antibody [C7-50]	ELISA, Flow Cyt, IP, WB	<a href="#">ab2740</a>
Recombinant Hepatitis C Virus Core 1b protein	ELISA, SDS-PAGE, WB	<a href="#">ab91301</a>
Anti-Hepatitis C Virus Core Antigen antibody [6A1]	ELISA, IP	<a href="#">ab2582</a>
Biotin Anti-Hepatitis C Virus Core Antigen antibody [1E5]	ELISA, IP	<a href="#">ab2583</a>
Biotin Anti-Hepatitis C Virus Core Antigen antibody [1F6]	ELISA, IP	<a href="#">ab2587</a>
Anti-Hepatitis C Virus Core Antigen antibody [11-B3]	ELISA, IHC-Fr, WB	<a href="#">ab18929</a>
Recombinant Hepatitis C Virus Core Antigen protein	ELISA, SDS-PAGE, WB	<a href="#">ab49017</a>
Recombinant Hepatitis C Virus Core Antigen protein	ELISA, WB	<a href="#">ab49018</a>
Recombinant Hepatitis C Virus Core Antigen protein (Rhodamine)	ELISA, SDS-PAGE	<a href="#">ab49019</a>
Recombinant Hepatitis C Virus Core Antigen protein (Biotin)	ELISA, SDS-PAGE, WB	<a href="#">ab49020</a>
Recombinant Hepatitis C Virus Core Antigen protein (FITC)	ELISA, SDS-PAGE, WB	<a href="#">ab49021</a>
Anti-Hepatitis C Virus Core Antigen antibody	ELISA, WB	<a href="#">ab50288</a>
Anti-Hepatitis C Virus Core Antigen antibody	ELISA, WB	<a href="#">ab58713</a>
Biotin Anti-Hepatitis C Virus Core Antigen antibody [H6-29]	ICC/IF, IHC-Fr, WB	<a href="#">ab192050</a>
Biotin Anti-Hepatitis C Virus Core Antigen antibody [7A1]	ELISA	<a href="#">ab252689</a>
Biotin Anti-Hepatitis C Virus Core Antigen antibody [6A1]	ELISA, IHC-Fr	<a href="#">ab252693</a>
Anti-Hepatitis C Virus Core Antigen antibody [B3314M]	ELISA, IHC-Fr, WB	<a href="#">ab252694</a>
Anti-Hepatitis C Virus Core Antigen antibody [B3335M]	ELISA, WB	<a href="#">ab252695</a>
Anti-Hepatitis C Virus Core NS3 + NS4 antibody	ELISA, IHC-Fr, WB	<a href="#">ab68632</a>
Recombinant Hepatitis C Virus NS4A protein	FuncS	<a href="#">ab84350</a>
Biotin Anti-Hepatitis C Virus NS4A antibody [S4-13]	ELISA, Flow Cyt, ICC/IF, WB	<a href="#">ab124526</a>
Anti-Hepatitis C Virus NS4A antibody [S4-13]	ELISA, ICC/IF, WB	<a href="#">ab128685</a>

## Hepatitis C virus (isolate Con1)

Product	Application	Cat. No.
Anti-HCV subtype 1b NS5B antibody	ELISA, WB	<a href="#">ab35586</a>
Anti-HCV subtype 1b NS5B antibody [10D6]	ELISA, IP, WB	<a href="#">ab100895</a>
Anti-HCV subtype 1b NS5B antibody	IHC-P	<a href="#">ab203074</a>
Anti-Hepatitis C Virus E1 antibody	ELISA, WB	<a href="#">ab54555</a>
Anti-Hepatitis C Virus E1 antibody	ELISA, ICC/IF, WB	<a href="#">ab110972</a>

## Hepatitis C virus (isolate EUH1480)

Product	Application	Cat. No.
Recombinant Human Hepatitis C virus NS5B protein	MS, SDS-PAGE	<a href="#">ab180323</a>

## Hepatitis C virus (isolate H)

Product	Application	Cat. No.
Anti-Hepatitis C Virus antibody	WB	<a href="#">ab1033</a>
Anti-Hepatitis C Virus antibody	WB	<a href="#">ab1035</a>

## Hepatitis C virus (isolate HC-J1)

Product	Application	Cat. No.
Anti-Hepatitis C Virus antigen antibody [H25]	ELISA, IHC-P	<a href="#">ab13832</a>
Recombinant Hepatitis C Virus nucleocapsid protein	ELISA, WB	<a href="#">ab43027</a>

## Hepatitis C virus (isolate HC-J4)

Product	Application	Cat. No.
Recombinant Hepatitis C virus Hepatitis C Virus 1b core antigen protein	SDS-PAGE	<a href="#">ab198152</a>
Recombinant hepatitis c virus Hepatitis C Virus 1b core antigen protein	FuncS, SDS-PAGE	<a href="#">ab198158</a>



## Hepatitis C virus (isolate Japanese)

Product	Application	Cat. No.
Anti-Hepatitis C Virus NS4 antibody	ELISA, WB	<a href="#">ab20955</a>
Recombinant Hepatitis C Virus Hepatitis C Virus NS4 protein	ELISA, Flow Cyt, SDS-PAGE, WB	<a href="#">ab49026</a>
Recombinant Hepatitis C Virus NS4 protein	ELISA, WB	<a href="#">ab49028</a>
Recombinant Hepatitis C Virus NS4 protein (FITC)	ELISA, SDS-PAGE, WB	<a href="#">ab49029</a>

## Hepatitis C virus (isolate JFH-1)

Product	Application	Cat. No.
Recombinant Hepatitis C Virus Core 2a protein (Tagged)	FuncS, SDS-PAGE	<a href="#">ab198063</a>

## Hepatitis C virus (isolate NZL1)

Product	Application	Cat. No.
Recombinant hepatitis c virus Hepatitis C Virus NS3 + NS4A protein	FuncS, SDS-PAGE	<a href="#">ab198093</a>
Recombinant Hepatitis C Virus NS3 + NS4A (mutated D168V) protein	FuncS, SDS-PAGE	<a href="#">ab198098</a>

## Hepatitis delta virus (isolate AMERICAN)

Product	Application	Cat. No.
Recombinant Hepatitis D Virus protein	ELISA, WB	<a href="#">ab49050</a>

## Hepatitis delta virus (isolate ITALIAN)

Product	Application	Cat. No.
Recombinant Small delta antigen protein (Tagged)	SDS-PAGE	<a href="#">ab238373</a>

## Hepatitis E virus (strain Myanmar)

Product	Application	Cat. No.
Recombinant Hepatitis E Virus ORF2 antigen protein	ELISA, WB	<a href="#">ab49036</a>
Recombinant Hepatitis E Virus ORF2 antigen protein (Fc Chimera)	SDS-PAGE	<a href="#">ab256517</a>
Recombinant Hepatitis E Virus ORF2 antigen protein (His tag)	SDS-PAGE	<a href="#">ab256518</a>

## Hepatitis E virus human/g1/India/Hyderabad

Product	Application	Cat. No.
Recombinant Protein ORF3 (Tagged)	SDS-PAGE	<a href="#">ab238356</a>

## Hepatitis E virus swine/g3/United States/swUS1

Product	Application	Cat. No.
Anti-Hepatitis E Virus antibody	WB	<a href="#">ab1036</a>
Anti-Hepatitis E Virus antibody [5F3]	ELISA, ICC/IF, WB	<a href="#">ab233244</a>

# Herpes simplex virus

## Herpes simplex virus

Product	Application	Cat. No.
Human Anti-Herpes simplex virus Type 1 IgG ELISA Kit (HSV1)	ELISA	<a href="#">ab108737</a>
Human Anti-Herpes simplex virus Type 1 IgM ELISA Kit (HSV1)	ELISA	<a href="#">ab108738</a>
Human Anti-Herpes simplex virus Type 2 IgG ELISA Kit (HSV2)	ELISA	<a href="#">ab108739</a>
Human Anti-Herpes simplex virus Type 2 IgM ELISA Kit (HSV2)	ELISA	<a href="#">ab108740</a>
Human Anti-Herpes simplex virus Type 1 and 2 IgG ELISA Kit (HSV1+2)	ELISA	<a href="#">ab108741</a>
Human Anti-Herpes simplex virus Type 1 and 2 IgM ELISA Kit (HSV1+2)	ELISA	<a href="#">ab108742</a>

## Herpes simplex virus (type 1 / strain 17)

Target	Product	Application	Cat. No.
<b>HSV1</b>	Anti-HSV1 antibody	IHC-P	<a href="#">ab9533</a>
	Biotin Anti-HSV1 antibody	ELISA, ICC/IF	<a href="#">ab19946</a>
	Biotin Anti-HSV1 antibody	ELISA, ICC/IF	<a href="#">ab20017</a>
	HRP Anti-HSV1 antibody	ELISA	<a href="#">ab20306</a>
	FITC Anti-HSV1 antibody	ELISA, ICC/IF	<a href="#">ab20437</a>
	Anti-HSV1 antibody	ELISA, IHC-Fr, IHC-P, WB	<a href="#">ab20536</a>
	Anti-HSV1 antibody	IHC-P	<a href="#">ab234332</a>
	Anti-HSV1 antibody - BSA and Azide free	IHC-P	<a href="#">ab236307</a>
	Anti-HSV1 antibody [B323M]	ELISA	<a href="#">ab252715</a>
	Anti-HSV1 antibody [B319M]	ELISA	<a href="#">ab252716</a>
	Anti-HSV1 antibody	ELISA	<a href="#">ab252739</a>
<b>HSV1 + HSV2</b>	HRP Anti-HSV1 + HSV2 antibody	ELISA, ICC/IF	<a href="#">ab20922</a>
	FITC Anti-HSV1 + HSV2 antibody	ICC/IF	<a href="#">ab28579</a>
	HRP Anti-HSV1 + HSV2 antibody	ELISA, ICC	<a href="#">ab34561</a>

## Herpes simplex virus (type 1 / strain 17) (continued)

Target	Product	Application	Cat. No.
<b>HSV1 + HSV2 (continued)</b>	Anti-HSV1 + HSV2 antibody	ELISA, ICC/IF	<a href="#">ab34568</a>
	Anti-HSV1 + HSV2 antibody	WB	<a href="#">ab226858</a>
<b>HSV1 gC Envelope Protein</b>	Anti-HSV1 gC Envelope Protein antibody [3G9]	ELISA, ICC/IF, WB	<a href="#">ab6509</a>
<b>HSV1 gD</b>	Anti-HSV1 gD antibody [1-I-9]	ELISA, WB	<a href="#">ab18638</a>
	Recombinant HSV1 gD protein	ELISA, WB	<a href="#">ab43045</a>
	Recombinant HSV1 gD protein	ELISA, WB	<a href="#">ab48969</a>
<b>HSV1 gE Envelope Protein</b>	Anti-HSV1 gE Envelope Protein antibody [9H3]	ELISA, ICC/IF, WB	<a href="#">ab6510</a>
	Anti-HSV1 gG Envelope Protein antibody [7F5]	ELISA, ICC/IF, WB	<a href="#">ab6511</a>
	Recombinant HSV1 gG Envelope Protein	ELISA, WB	<a href="#">ab43048</a>
<b>HSV1 ICP0</b>	Anti-HSV1 ICP0 antibody [5H7]	ELISA, ICC/IF, WB	<a href="#">ab6513</a>
<b>HSV1 ICP4 Immediate Early Protein</b>	Anti-HSV 1 ICP4 Immediate Early Protein antibody [10F1]	ELISA, ICC/IF, WB	<a href="#">ab6514</a>
<b>HSV1 ICP8 Major DNA binding protein</b>	Anti-HSV1 ICP8 Major DNA binding protein antibody [10A3]	ICC/IF, WB	<a href="#">ab20193</a>
	Anti-HSV1 ICP8 Major DNA binding protein antibody [11E2]	ICC/IF, IP, WB	<a href="#">ab20194</a>
<b>ICP27</b>	Anti-ICP27 antibody [H1113]	ICC/IF, WB	<a href="#">ab53480</a>
<b>UL42</b>	Anti-UL42 antibody [13C9]	WB	<a href="#">ab19298</a>
	Anti-UL42 antibody [2H4]	ELISA, ICC/IF, IHC-Fr, IP, WB	<a href="#">ab19311</a>
<b>US3</b>	Anti-US3 antibody	ICC/IF, WB	<a href="#">ab92392</a>
<b>VP16</b>	Anti-VP16 tag antibody	IHC-Fr, IHC-P, WB	<a href="#">ab4808</a>
	Recombinant VP16 protein	SDS-PAGE	<a href="#">ab81878</a>

# Human herpesvirus

## Human herpesvirus 2 strain HG52

Target	Product	Application	Cat. No.
<b>HSV1 + HSV2 gB</b>	Anti-HSV1 + HSV2 gB antibody [10B7]	ELISA, ICC/IF, WB	<a href="#">ab6506</a>
<b>HSV1 + HSV2 gD</b>	Anti-HSV1 + HSV2 gD antibody [2C10]	ELISA, ICC/IF, WB	<a href="#">ab6507</a>
<b>HSV1 + HSV2 ICP5 Major Capsid Protein</b>	Anti-HSV1 + HSV2 ICP5 Major Capsid Protein antibody [3B6]	ELISA, ICC/IF, WB	<a href="#">ab6508</a>
<b>HSV2</b>	Anti-HSV2 antibody [B318M]	ELISA	<a href="#">ab252717</a>
	Anti-HSV2 antibody	ELISA, ICC/IF, IM, WB	<a href="#">ab21112</a>
<b>HSV2 gC</b>	Biotin Anti-HSV2 antibody	ELISA, ICC/IF, WB	<a href="#">ab20743</a>
	Anti-HSV2 gC antibody [H1196]	ICC/IF	<a href="#">ab53479</a>
<b>HSV2 gD</b>	FITC Anti-HSV2 antibody	ICC/IF	<a href="#">ab20971</a>
	Recombinant HSV2 gD protein	ELISA, WB	<a href="#">ab43046</a>
<b>HSV2 gG Envelope</b>	Recombinant HSV2 gG Envelope protein	ELISA, WB	<a href="#">ab43047</a>
	Anti-HSV2 gG Envelope antibody [H1206]	ICC/IF, WB	<a href="#">ab53470</a>
<b>HSV2 ICP4</b>	Anti-HSV2 ICP4 antibody	ELISA, WB	<a href="#">ab96431</a>
	Anti-HSV2 ICP4 antibody	ELISA, WB	<a href="#">ab96432</a>
<b>HSV2 ICP8 Major DNA binding protein</b>	Anti-HSV2 ICP8 Major DNA binding protein antibody [4E6]	ELISA, ICC/IF, WB	<a href="#">ab6515</a>
<b>UL49</b>	Recombinant Herpes simplex virus UL49 protein (His tag)	SDS-PAGE	<a href="#">ab224839</a>
<b>VP16</b>	Anti-VP16 tag antibody	IHC-Fr, IHC-P, WB	<a href="#">ab4808</a>
	Recombinant VP16 protein	SDS-PAGE	<a href="#">ab81878</a>

## Human herpesvirus 2 strain SA8

Target	Product	Application	Cat. No.
HSV2 gB	Anti-HSV2 gB antibody [1-G-10]	ELISA, ICC/IF, WB	<a href="#">ab18687</a>

## Human herpesvirus 3 strain Dumas

Target	Product	Application	Cat. No.
<b>Varicella Zoster Virus</b>	Anti-Varicella Zoster Virus antibody [cocktail]	ELISA, ICC/IF, IHC-P, WB	<a href="#">ab252698</a>
	FITC Anti-Varicella Zoster Virus antibody [5B7]	ICC/IF	<a href="#">ab128768</a>
<b>Varicella Zoster Virus gB</b>	Anti-Varicella Zoster Virus gB antibody [10G6]	ELISA, ICC/IF	<a href="#">ab52550</a>
	Anti-Varicella Zoster Virus gB antibody [SG2-2E6]	ICC/IF, WB	<a href="#">ab252702</a>
<b>Varicella Zoster Virus gH</b>	Anti-Varicella Zoster Virus gH antibody [6A6]	ELISA, ICC/IF	<a href="#">ab52551</a>
	Anti-Varicella Zoster Virus gH antibody [SG3]	ICC/IF, IP, WB	<a href="#">ab252704</a>
<b>Varicella Zoster Virus MCP</b>	Anti-Varicella Zoster Virus MCP antibody [3H2]	ICC/IF	<a href="#">ab52553</a>
<b>VZV gE protein</b>	Recombinant VZV gE protein	ELISA, WB	<a href="#">ab43050</a>
	Anti-VZV gE protein antibody [#9]	ICC/IF, WB	<a href="#">ab272686</a>
<b>VZV ORF9</b>	Recombinant VZV ORF9 protein	ELISA, WB	<a href="#">ab43051</a>
	Recombinant VZV ORF9 protein	ELISA, WB	<a href="#">ab48959</a>

## Human herpesvirus 3 strain Oka vaccine

Target	Product	Application	Cat. No.
<b>Varicella Zoster Virus gI</b>	Anti-Varicella Zoster Virus gI antibody [8C4]	ELISA, ICC/IF, WB	<a href="#">ab52552</a>
	Anti-Varicella Zoster Virus gI antibody [SG4]	ICC/IF, IP	<a href="#">ab252705</a>
<b>Varicella Zoster Virus IE62</b>	Anti-Varicella Zoster Virus IE62 antibody [8B11]	ICC/IF	<a href="#">ab52554</a>
	Anti-Varicella Zoster Virus IE62 antibody [62B] - BSA and Azide free	ICC/IF, WB	<a href="#">ab212015</a>
	Anti-Varicella Zoster Virus IE62 antibody [IE(62)]	IP	<a href="#">ab252701</a>

## Human herpesvirus 4

Target	Product	Application	Cat. No.
<b>EBV</b>	Recombinant EBV protein	ELISA, WB	<a href="#">ab43141</a>

## Human herpesvirus 4 (strain B95-8)

Target	Product	Application	Cat. No.
<b>EBNA 3B</b>	Anti-EBNA 3B antibody	Dot, ELISA, ICC, IHC-P, WB	<a href="#">ab16127</a>
<b>EBNA 3C</b>	Anti-EBNA 3C antibody	ELISA, ICC/IF, IHC-Fr	<a href="#">ab16128</a>
<b>EBNA2</b>	Anti-EBNA2 antibody [287C1a]	Dot, WB	<a href="#">ab74551</a>
	Anti-EBNA2 antibody [PE2]	ICC/IF, IHC-Fr, IP, WB	<a href="#">ab90543</a>
	Recombinant EBNA2 protein (Tagged)	SDS-PAGE	<a href="#">ab241243</a>
<b>EBV Early Antigen Restricted Ea-R p85</b>	Recombinant Human herpesvirus EBV Early Antigen Restricted Ea-R p85 protein (His tag)	SDS-PAGE	<a href="#">ab224863</a>
<b>EBV gp340/220 Envelope Protein</b>	Anti-EBV gp340/220 Envelope Protein antibody [10B5]	ELISA, ICC/IF	<a href="#">ab6525</a>
	Recombinant EBV gp340/220 Envelope Protein (Tagged)	MS, SDS-PAGE	<a href="#">ab237750</a>
<b>EBV Latent Membrane Protein 1</b>	Anti-EBV Latent Membrane Protein 1 antibody [CS1, CS2, CS3, CS4], prediluted	IHC-Fr, IHC-P	<a href="#">ab7502</a>
	Anti-EBV Latent Membrane Protein 1 antibody [CS 1-4]	IHC-Fr, IHC-P, IP, WB	<a href="#">ab78113</a>
	Anti-EBV Latent Membrane Protein 1 antibody [D24-G]	IHC-P	<a href="#">ab136633</a>
	Recombinant EBV Latent Membrane Protein 1 (His tag)	MS, SDS-PAGE	<a href="#">ab240835</a>
<b>EBV LMP2A</b>	Anti-EBV LMP2A antibody [15F9]	IHC-P, WB	<a href="#">ab59028</a>
<b>EBV Nuclear Antigen/EBNA1</b>	Anti-EBV Nuclear Antigen/EBNA1 antibody [E1-2.5]	ELISA, ICC	<a href="#">ab8329</a>
	Anti-EBV Nuclear Antigen/EBNA1 antibody	ELISA, ICC/IF	<a href="#">ab20870</a>
	Recombinant EBV Nuclear Antigen/EBNA1 protein	ELISA, SDS-PAGE, WB	<a href="#">ab138345</a>
<b>EBV p23</b>	Recombinant EBV p23 protein	ELISA, WB	<a href="#">ab43145</a>

## Human herpesvirus 5 strain AD169

Target	Product	Application	Cat. No.
<b>Cytomegalovirus</b>	Anti-Cytomegalovirus antibody [6F12]	ELISA, ICC/IF, WB	<a href="#">ab6500</a>
	Anti-Cytomegalovirus antibody [DDG9 & CCH2], prediluted	IHC-Fr, IHC-P, WB	<a href="#">ab17073</a>
	Anti-Cytomegalovirus antibody	ELISA, ICC/IF	<a href="#">ab21015</a>
	HRP Anti-Cytomegalovirus antibody	ELISA, IHC-P, WB	<a href="#">ab87339</a>
<b>Cytomegalovirus AD169</b>	FITC Anti-Cytomegalovirus AD169 antibody	ICC, IHC-P	<a href="#">ab30952</a>
	HRP Anti-Cytomegalovirus AD169 antibody	ELISA, IHC-Fr, WB	<a href="#">ab69245</a>
<b>Cytomegalovirus ICP36</b>	Recombinant Cytomegalovirus ICP36 protein	ELISA, WB	<a href="#">ab43044</a>
<b>Cytomegalovirus IE1 and IE2</b>	Anti-Cytomegalovirus IE1 and IE2 antibody [CH160]	ICC/IF, WB	<a href="#">ab53495</a>
<b>Cytomegalovirus pp65</b>	Anti-Cytomegalovirus pp65 antibody [3A12] - BSA and Azide free	ICC/IF, WB	<a href="#">ab6503</a>
	Anti-Cytomegalovirus pp65 antibody [1-L-11]	ELISA, ICC/IF, WB	<a href="#">ab31624</a>

## Human herpesvirus 5 strain Merlin

Target	Product	Application	Cat. No.
<b>Cytomegalovirus pp150</b>	Recombinant Cytomegalovirus pp150 protein	ELISA, WB	<a href="#">ab43039</a>
<b>Viral interleukin-10 homolog</b>	Recombinant Viral interleukin-10 homolog protein	MS, SDS-PAGE	<a href="#">ab238283</a>

## Human herpesvirus 5 strain Towne

Target	Product	Application	Cat. No.
<b>Cytomegalovirus Glycoprotein B</b>	Anti-Cytomegalovirus Glycoprotein B antibody [2F12]	ELISA, ICC/IF, WB	<a href="#">ab6499</a>
	Anti-Cytomegalovirus Glycoprotein B antibody [HCMV37]	ELISA, ICC/IF, IHC-Fr, Neut	<a href="#">ab54023</a>
	FITC Anti-Cytomegalovirus Glycoprotein B antibody [HCMV37]	ICC/IF	<a href="#">ab74085</a>
	Recombinant Cytomegalovirus Glycoprotein B	ELISA, WB	<a href="#">ab43040</a>
	Recombinant Cytomegalovirus Glycoprotein B (Fc Chimera)	SDS-PAGE	<a href="#">ab206020</a>



## Human herpesvirus 5 strain Towne (continued)

Target	Product	Application	Cat. No.
<b>Cytomegalovirus Glycoprotein B (continued)</b>	Recombinant Cytomegalovirus Glycoprotein B (Fc Chimera)	SDS-PAGE	<a href="#">ab256435</a>
	Recombinant Cytomegalovirus Glycoprotein B (Fc Chimera)	SDS-PAGE	<a href="#">ab256436</a>

## Human herpesvirus 6 (strain Uganda-1102)

Target	Product	Application	Cat. No.
<b>HHV6AgQ1</b>	Anti-HHV6AgQ1 antibody [119] - BSA and Azide free	ELISA, Flow Cyt, ICC/IF, IP, WB	<a href="#">ab179902</a>

## Human herpesvirus 8 strain GK18

Target	Product	Application	Cat. No.
<b>v-cyclin</b>	Anti-v-cyclin antibody [94B]	ICC/IF, IP, WB	<a href="#">ab12208</a>
<b>vGPCR</b>	Anti-vGPCR antibody	Flow Cyt	<a href="#">ab25122</a>
<b>viral MIP2</b>	Recombinant herpes simplex virus viral MIP2 protein	Inhibition, SDS-PAGE	<a href="#">ab50234</a>
	Recombinant herpes simplex virus viral MIP2 protein	FuncS, HPLC, SDS-PAGE	<a href="#">ab201382</a>
	Recombinant human herpesvirus viral MIP2 protein (Active)	FuncS, HPLC, SDS-PAGE	<a href="#">ab243959</a>

# Human adenovirus

## Human adenovirus 2

Product	Application	Cat. No.
Anti-Adenovirus Type 2 antibody	ELISA, ICC/IF	<a href="#">ab24155</a>
Recombinant E4-ORF1 protein	SDS-PAGE	<a href="#">ab203529</a>

## Human adenovirus 5

Product	Application	Cat. No.
Anti-Adenovirus Type 5 E1A antibody	IHC-P, WB	<a href="#">ab204123</a>
Recombinant L3 protease protein (Tagged)	MS, SDS-PAGE	<a href="#">ab237743</a>

## Human enterovirus 71 (strain BRCR)

Product	Application	Cat. No.
Anti-Enterovirus 71 antibody [10F0]	ICC/IF, Neut	<a href="#">ab36367</a>
Anti-Enterovirus 71 antibody	WB	<a href="#">ab169442</a>
Recombinant VP2 protein	SDS-PAGE	<a href="#">ab214830</a>

# Human immunodeficiency virus

## Human immunodeficiency virus type 1 (BH8 ISOLATE)

Product	Application	Cat. No.
Anti-HIV1 gp41 antibody [10E9]	ELISA, ICC/IF, RIP, WB	<a href="#">ab9065</a>
Anti-HIV1 gp41 antibody [1D4]	ELISA, WB	<a href="#">ab18633</a>
Anti-HIV1 gp41 antibody	WB	<a href="#">ab20890</a>
Recombinant HIV1 gp41 protein	ELISA, WB	<a href="#">ab49068</a>
Recombinant HIV1 gp41 protein	ELISA, WB	<a href="#">ab49070</a>
HRP Anti-HIV1 gp41 antibody	ELISA, IHC-Fr, WB	<a href="#">ab68622</a>
Biotin Anti-HIV1 gp41 antibody	ELISA, ICC/IF, WB	<a href="#">ab68623</a>

## Human immunodeficiency virus type 1 (BRU ISOLATE)

Product	Application	Cat. No.	Product
<b>HIV protease</b>	Anti-HIV protease antibody	ELISA, Inhibition, IP, WB	<a href="#">ab211627</a>
<b>HIV1 Reverse Transcriptase</b>	Anti-HIV1 Reverse Transcriptase antibody [39/4.12.2]	ELISA, WB	<a href="#">ab9066</a>
	Anti-HIV1 Reverse Transcriptase antibody	ELISA, WB	<a href="#">ab63911</a>
	Anti-HIV1 Reverse Transcriptase antibody	ELISA, WB	<a href="#">ab63912</a>
	Recombinant HIV1 Reverse Transcriptase protein (Active)	ELISA, FuncS, SDS-PAGE, WB	<a href="#">ab63979</a>
<b>HIV1 tat</b>	Anti-HIV1 tat antibody [1]	ELISA, IHC-P, RIP, WB	<a href="#">ab42359</a>
	Anti-HIV1 tat antibody [N1]	ELISA, WB	<a href="#">ab42360</a>
	Anti-HIV1 tat antibody - ChIP Grade	WB	<a href="#">ab43014</a>
	Biotin Anti-HIV1 tat antibody	ELISA, Flow Cyt, WB	<a href="#">ab43015</a>
	FITC Anti-HIV1 tat antibody	Flow Cyt	<a href="#">ab43016</a>
	Anti-HIV1 tat antibody [N3]	ELISA, WB	<a href="#">ab63957</a>

## Human immunodeficiency virus type 1 (BRU ISOLATE) (continued)

Product	Application	Cat. No.	Product
<b>HIV1 tat (continued)</b>	Recombinant HIV1 tat protein	BL, SDS-PAGE, WB	<a href="#">ab83353</a>
	Recombinant HIV1 tat protein	SDS-PAGE, WB	<a href="#">ab109929</a>

## Human immunodeficiency virus type 1 (NDK ISOLATE)

Product	Application	Cat. No.	Product
<b>HIV1 + HIV2 envelope antigen</b>	Recombinant HIV1 + HIV2 envelope antigen protein	ELISA, WB	<a href="#">ab43024</a>
	Recombinant HIV1 + HIV2 envelope antigen protein	ELISA, WB	<a href="#">ab48966</a>
<b>HIV1 p17</b>	Anti-HIV1 p17 antibody [32/5.8.42]	ELISA, ICC/IF, RIP, WB	<a href="#">ab9064</a>
	Anti-HIV1 p17 antibody [2D11]	ELISA, ICC/IF, RIP, WB	<a href="#">ab9067</a>
	Anti-HIV1 p17 antibody [32/1.24.89]	ELISA, ICC/IF, RIP, WB	<a href="#">ab9068</a>
	Anti-HIV1 p17 antibody [17-1]	Flow Cyt, ICC/IF, IP, WB	<a href="#">ab66641</a>
	Recombinant HIV1 p17 protein	SDS-PAGE	<a href="#">ab63981</a>
<b>HIV1 p17 + p24</b>	Recombinant HIV1 p17 + p24 protein	ELISA, WB	<a href="#">ab49081</a>
<b>HIV1 p17 + p24 + gp120</b>	Recombinant HIV1 p17 + p24 + gp120 protein	ELISA, WB	<a href="#">ab49077</a>
<b>HIV1 p55</b>	Recombinant HIV1 p55 protein	SDS-PAGE	<a href="#">ab63995</a>
<b>p55 + p17</b>	Anti-HIV1 p55 + p17 antibody	ELISA, WB	<a href="#">ab63915</a>
	Anti-HIV1 p55 + p17 antibody	ELISA, WB	<a href="#">ab63916</a>
	Anti-HIV1 p55 + p17 antibody - C-terminal	IHC-P	<a href="#">ab226320</a>

## Human immunodeficiency virus type 1 (NEW YORK-5 ISOLATE)

Product	Application	Cat. No.
Recombinant HIV1 Gag p15 protein	ELISA, FuncS, SDS-PAGE, WB	<a href="#">ab127887</a>

## Human immunodeficiency virus type 1 BH10

Product	Application	Cat. No.
Recombinant HIV1 Gag protein	SDS-PAGE, WB	<a href="#">ab109969</a>
Recombinant HIV1 p15 protein	ELISA, SDS-PAGE, WB	<a href="#">ab63994</a>
Anti-HIV1 p15 antibody	ELISA, WB	<a href="#">ab66951</a>

## Human immunodeficiency virus type 1 lw12.3 isolate

Product	Application	Cat. No.
Anti-HIV gp160 antibody	ELISA, WB	<a href="#">ab117122</a>
Anti-HIV1 p55 + p24 + p17 antibody	ELISA, WB	<a href="#">ab63917</a>

## Human immunodeficiency virus type 2 (ISOLATE BEN)

Product	Application	Cat. No.
Recombinant HIV2 gp32 protein	ELISA, WB	<a href="#">ab49083</a>
Anti-HIV2 Nef antibody [4B5]	IP, WB	<a href="#">ab22626</a>

## Human immunodeficiency virus type 2 (ISOLATE NIH-Z)

Product	Application	Cat. No.
Recombinant HIV2 gp120 protein (His tag)	SDS-PAGE	<a href="#">ab217639</a>

## Human immunodeficiency virus type 2 (ISOLATE ROD)

Product	Application	Cat. No.
Recombinant vpx protein (His tag)	SDS-PAGE	<a href="#">ab267924</a>

# Human papillomavirus

## Human papillomavirus type 6b

Product	Application	Cat. No.
Recombinant HPV6 L1 protein	SDS-PAGE	<a href="#">ab187206</a>

## Human papillomavirus type 11

Product	Application	Cat. No.
Anti-HPV11 E2 antibody [10E12]	ELISA, ICC/IF, WB	<a href="#">ab100968</a>
Anti-HPV11 E7 antibody [9H5]	ELISA, ICC/IF, IP, WB	<a href="#">ab100967</a>
Recombinant Human Papilloma Virus type 11 L1 protein	SDS-PAGE	<a href="#">ab187234</a>

## Human papillomavirus type 16

Target	Product	Application	Cat. No.
<b>HPV16</b>	Anti-HPV16 antibody [HPV16L1/1058] - BSA and Azide free	IHC-P	<a href="#">ab234030</a>
<b>HPV16 E1+E4</b>	Anti-HPV16 E1+E4 antibody [HPV16 E1/E4]	IHC-P	<a href="#">ab270738</a>
	Anti-HPV16 E1+E4 antibody [TVG 403]	ELISA, Flow Cyt, IHC-Fr	<a href="#">ab20190</a>
<b>HPV16 E6</b>	Recombinant HPV16 E6 (mutated C23S + C58S + C87S + C104S + C118S + C147S) protein	FuncS, SDS-PAGE	<a href="#">ab188662</a>
	Recombinant HPV16 E6 protein (His tag)	MS, SDS-PAGE	<a href="#">ab226447</a>
<b>HPV16 E6 + HPV18 E6</b>	Anti-HPV16 E6 + HPV18 E6 antibody [C1P5]	IHC-P, IP, WB	<a href="#">ab70</a>
	Anti-HPV16 E6 + HPV18 E6 antibody [C1P5], prediluted	IHC-Fr, IHC-P	<a href="#">ab51931</a>
<b>HPV16 E2</b>	Anti-HPV16 E2 antibody [TVG 261]	ELISA, WB	<a href="#">ab17185</a>
	Anti-HPV16 E2 antibody [TVG 271]	ELISA, WB	<a href="#">ab17190</a>
<b>HPV16 L1</b>	Anti-HPV16 L1 antibody [CamVir 1]	IHC-P, IP, WB	<a href="#">ab69</a>
	Anti-HPV16 L1 antibody [HPV16/2058R]	IHC-P	<a href="#">ab234305</a>
	Anti-HPV16 L1 antibody [rHPV16L1/1058]	IHC-P	<a href="#">ab234309</a>

## Human papillomavirus type 16 (continued)

Target	Product	Application	Cat. No.
<b>HPV16 L1 (continued)</b>	Anti-HPV16 L1 antibody [rHPV16L1/1058] - BSA and Azide free	IHC-P	<a href="#">ab236304</a>
	Anti-HPV16 L1 antibody [HPV16/2058R] - BSA and Azide free	IHC-P	<a href="#">ab236310</a>
	Recombinant HPV16 L1 protein	ELISA, EM, SDS-PAGE, WB	<a href="#">ab119880</a>
<b>Human Papillomavirus 16 (E7)</b>	Anti-Human Papillomavirus 16 (E7) antibody [TVG 701Y]	ELISA, Flow Cyt, IHC-Fr, WB	<a href="#">ab20191</a>
	Recombinant Human Papillomavirus 16 (E7) protein (His tag)	MS, SDS-PAGE	<a href="#">ab237790</a>

## Human papillomavirus type 18

Target	Product	Application	Cat. No.
<b>HPV18 E2</b>	Anti-HPV18 E2 antibody [2E7]	ELISA, ICC/IF, WB	<a href="#">ab100969</a>
<b>HPV18 E6</b>	Anti-HPV18 E6 antibody [BF7]	ELISA, RIA, WB	<a href="#">ab20192</a>
<b>HPV18 E7</b>	Anti-HPV18 E7 antibody [8E2]	ELISA, ICC/IF, IP, WB	<a href="#">ab100953</a>
	Recombinant Human papillomavirus HPV18 E7 protein (His tag)	MS, SDS-PAGE	<a href="#">ab236931</a>
	Recombinant HPV18 E7 protein (His tag)	SDS-PAGE	<a href="#">ab238369</a>
<b>HPV18 L1</b>	Recombinant HPV18 L1 protein	ELISA, EM, SDS-PAGE, WB	<a href="#">ab119881</a>
	Recombinant HPV18 L1 protein	SDS-PAGE	<a href="#">ab187222</a>
	FITC Anti-HPV18 L1 antibody	WB	<a href="#">ab193283</a>
<b>Minor capsid protein L2</b>	Recombinant Human papillomavirus Minor capsid protein L2 (His tag)	SDS-PAGE	<a href="#">ab241439</a>

## Human papillomavirus type 33

Product	Application	Cat. No.
Recombinant HPV33 L1 protein	ELISA, EM, SDS-PAGE, WB	<a href="#">ab119882</a>

# Other viruses

Organism	Product	Application	Cat. No.
<b>AKR (endogenous) murine leukemia virus</b>	Anti-GAG antibody	ELISA, WB	<a href="#">ab100970</a>
<b>Autographa californica nucleopolyhedrovirus</b>	Anti-gp64 antibody [AcV5]	WB	<a href="#">ab91214</a>
<b>Avian encephalomyelitis virus strain Calnek</b>	Anti-Genome Polyprotein antibody	IHC-P	<a href="#">ab226321</a>
	Recombinant Genome Polyprotein (His tag)	SDS-PAGE	<a href="#">ab236928</a>
	Recombinant Genome Polyprotein (Tagged)	SDS-PAGE	<a href="#">ab267866</a>
<b>Avian infectious bronchitis virus (strain Beaudette US)</b>	Anti-Infectious Bronchitis (Massachusetts) antibody	ELISA	<a href="#">ab31671</a>
<b>BK polyomavirus</b>	Recombinant BK polyomavirus, strain AS, Major Capsid VP1 protein	ELISA, SDS-PAGE, WB	<a href="#">ab74567</a>
	Recombinant BK polyomavirus, strain AS, Major Capsid VP1 protein (Tagged)	MS, SDS-PAGE	<a href="#">ab237745</a>
<b>BK virus strain AS</b>	Anti-Polyoma virus, Large T antigen antibody [PyLT]	ICC/IF, IP, WB	<a href="#">ab18187</a>
<b>Bovine coronavirus Mebus</b>	Recombinant Spike glycoprotein (His tag)	MS, SDS-PAGE	<a href="#">ab235851</a>
<b>Bovine papillomavirus type 1</b>	Anti-Bovine Papilloma Virus E2 antibody [1E4]	ICC/IF, IP, WB	<a href="#">ab980</a>
	Anti-Bovine Papilloma Virus E2 antibody [5H4]	ELISA, ICC/IF, IP	<a href="#">ab1072</a>
	Anti-Bovine Papilloma Virus E2 antibody [1H10]	ICC/IF, WB	<a href="#">ab77174</a>
<b>Bovine rotavirus C486</b>	Recombinant Outer capsid glycoprotein VP7 (Tagged)	SDS-PAGE	<a href="#">ab238289</a>
<b>Bovine rotavirus strain NCDV/G6</b>	Anti-Rotavirus antibody [A2]	ICC/IF, WB	<a href="#">ab181695</a>
	FITC Anti-Rotavirus antibody	ICC/IF	<a href="#">ab31435</a>
	Anti-Rotavirus antibody	ICC/IF	<a href="#">ab20036</a>
	Anti-Rotavirus antibody	ELISA	<a href="#">ab33639</a>
	Anti-Rotavirus antibody	ELISA	<a href="#">ab252741</a>
<b>Chicken anemia virus 26P4/USA</b>	Recombinant Apoptin (VP3) protein (His tag)	MS, SDS-PAGE	<a href="#">ab237006</a>



# Other viruses (continued)

Organism	Product	Application	Cat. No.
<b>Chicken anemia virus Cuxhaven-1/Germany</b>	Anti-Apoptin antibody	ELISA, WB	<a href="#">ab193612</a>
	Recombinant Apoptin protein (Tagged)	SDS-PAGE	<a href="#">ab225644</a>
<b>Chikungunya virus strain Senegal 37997</b>	Human Anti-Chikungunya Virus IgG ELISA Kit	ELISA	<a href="#">ab177835</a>
	Human Anti-Chikungunya Virus IgM ELISA Kit	ELISA	<a href="#">ab177848</a>
	Recombinant Chikungunya Virus protein	SDS-PAGE, WB	<a href="#">ab187216</a>
	Recombinant Chikungunya Virus protein	ELISA, SDS-PAGE, WB	<a href="#">ab187240</a>
	Recombinant Chikungunya Virus protein (Fc Chimera)	ELISA, SDS-PAGE, WB	<a href="#">ab243285</a>
<b>Coxsackievirus B1 (strain Japan)</b>	Recombinant Cow Coxsackievirus B1 VP1 protein	SDS-PAGE, WB	<a href="#">ab138338</a>
<b>Crimean-Congo hemorrhagic fever virus strain IbAr10200</b>	Crimean Congo Hemorrhagic Fever Virus Glycoprotein N (His tag)	SDS-PAGE	<a href="#">ab256432</a>
	Anti-Nucleoprotein Crimean-Congo hemorrhagic fever virus antibody	WB	<a href="#">ab190657</a>
<b>Cucumber necrosis virus</b>	Anti-RNA silencing suppressor p19 antibody	WB	<a href="#">ab106238</a>
<b>Epstein-barr virus strain ag876</b>	Anti-EBNA 3A antibody	Dot, ELISA, ICC, IHC-Fr, WB	<a href="#">ab16126</a>
<b>Feline calicivirus (strain Urbana)</b>	Anti-Feline Calicivirus antibody [FCV1-43]	ELISA, IHC-P, WB	<a href="#">ab33990</a>
<b>Feline immunodeficiency virus (isolate wo)</b>	Anti-FIV p24 antibody [PAK3-2C1]	ELISA, Flow Cyt, ICC/IF, IHC-Fr, WB	<a href="#">ab65289</a>
<b>Hamster polyomavirus</b>	Anti-Polyoma virus, Medium T antigen antibody [PyMT]	ICC/IF, IP, WB	<a href="#">ab15085</a>
<b>Hantaan virus 76-118</b>	Anti-Hantavirus nucleocapsid protein antibody [5E11]	I-ELISA, WB	<a href="#">ab34757</a>
	Anti-Hantavirus nucleocapsid protein antibody [5E11]	ICC/IF	<a href="#">ab34759</a>

# Other viruses (continued)

Organism	Product	Application	Cat. No.
<b>Hantaan virus 76-118 (continued)</b>	Recombinant Hantavirus nucleocapsid protein	ELISA, IA, SDS-PAGE	<a href="#">ab187215</a>
	Anti-Hantavirus glycoprotein G2 antibody [10B8]	I-ELISA, WB	<a href="#">ab34763</a>
	Anti-Hantavirus glycoprotein G2 antibody [10B8]	ICC/IF	<a href="#">ab34765</a>
	Anti-Hantavirus antibody [B5D9]	ICC/IF, IHC-Fr, WB	<a href="#">ab20309</a>
	HRP Anti-Hantavirus antibody [B5D9]	ICC/IF, IHC-Fr, WB	<a href="#">ab28086</a>
	Hantavirus IgG ELISA kit	ELISA	<a href="#">ab247195</a>
	Hantavirus IgM ELISA kit	ELISA	<a href="#">ab247196</a>
	Recombinant KHV nucleocapsid protein	ELISA, SDS-PAGE, WB	<a href="#">ab74557</a>
<b>Human metapneumovirus CAN97-83</b>	Anti-Metapneumovirus Fusion Protein antibody [hMPV 24]	ELISA, ICC/IF	<a href="#">ab94800</a>
	Anti-Metapneumovirus Phosphoprotein antibody [hMPV 33]	ELISA, ICC/IF	<a href="#">ab94801</a>
<b>Human parvovirus B19 isolate AU</b>	Recombinant Non-capsid protein NS-1 (Tagged)	SDS-PAGE	<a href="#">ab225595</a>
<b>Human respiratory syncytial virus A strain Long</b>	Anti-Respiratory Syncytial Virus Fusion (F) Glycoprotein antibody [RSV5A6]	ELISA, ICC/IF, IHC-Fr, IHC-P, WB	<a href="#">ab94968</a>
	Anti-RSV glycoprotein antibody [8C5 (9B6)]	ELISA, WB	<a href="#">ab128708</a>
	Recombinant Human RSV glycoprotein (His tag)	SDS-PAGE	<a href="#">ab206016</a>
<b>Human respiratory syncytial virus A2</b>	Anti-Respiratory Syncytial Virus antibody [2F7]	ELISA, ICC/IF, IHC-Fr, WB	<a href="#">ab43812</a>
	Anti-Respiratory Syncytial Virus antibody [9C5]	ELISA	<a href="#">ab10018</a>
	Anti-Respiratory Syncytial Virus antibody	ELISA, IHC-P, WB	<a href="#">ab20745</a>
	HRP Anti-Respiratory Syncytial Virus antibody	ELISA, IHC-P, Neut	<a href="#">ab20686</a>
	Anti-Respiratory Syncytial Virus antibody	ELISA, ICC, Inhibition	<a href="#">ab20531</a>
	FITC Anti-Respiratory Syncytial Virus antibody	ELISA, IHC-P	<a href="#">ab20391</a>
	Biotin Anti-Respiratory Syncytial Virus antibody	IHC-P, Neut	<a href="#">ab19986</a>

# Other viruses (continued)

Organism	Product	Application	Cat. No.
<b>Human respiratory syncytial virus A2 (continued)</b>	Anti-Respiratory Syncytial Virus antibody	WB	<a href="#">ab12253</a>
	Anti-Respiratory Syncytial Virus G Glycoprotein antibody [RSV133]	ELISA, ICC/IF, IHC-Fr, WB	<a href="#">ab94966</a>
	Anti-Respiratory Syncytial Virus Phosphoprotein antibody [RSVH102]	ELISA, ICC/IF, IHC-Fr, IP, WB	<a href="#">ab94965</a>
	Anti-Respiratory Syncytial Virus Subgroup A G Glycoprotein antibody [RSV1C2]	ELISA, ICC/IF, IHC-Fr, WB	<a href="#">ab94967</a>
<b>Human rhinovirus B3</b>	Anti-Human Rhinovirus 3C protease antibody	IP, WB	<a href="#">ab183574</a>
<b>Human rhinovirus B14</b>	Recombinant Picornain 3C protein	FuncS, SDS-PAGE	<a href="#">ab157275</a>
<b>Human rotavirus B219</b>	Recombinant Rotavirus X VP4 protein (His tag)	SDS-PAGE	<a href="#">ab238376</a>
<b>Human T-cell lymphotropic virus type 1 (Caribbean isolate)</b>	Anti-HTLV I p19 antibody [TP-7]	ELISA, Flow Cyt, ICC/IF, RIP, WB	<a href="#">ab9080</a>
	Anti-HTLV I p24 antibody [46/3.24.4]	ELISA, RIP, WB	<a href="#">ab9081</a>
	Recombinant HTLV I p24 protein	ELISA, WB	<a href="#">ab43036</a>
<b>Human T-cell lymphotropic virus type 1 (isolate MT-2)</b>	Anti-HTLV I gp46 antibody [67/5.5.13.1]	ELISA, Flow Cyt, ICC/IF, RIP, WB	<a href="#">ab9082</a>
	Anti-HTLV I gp46 antibody [68/4.11.21]	ELISA, ICC/IF, RIP, WB	<a href="#">ab9083</a>
	Anti-HTLV I gp46 antibody [65/6C2.2.34]	ELISA, ICC/IF, RIP, WB	<a href="#">ab9086</a>
<b>Infectious laryngotracheitis virus (strain Thorne V882)</b>	Anti-Laryngotracheitis antibody	ELISA, Neut	<a href="#">ab30491</a>
<b>Japanese encephalitis virus strain Nakayama</b>	Anti-Japanese encephalitis virus antibody	ICC/IF	<a href="#">ab26950</a>
<b>Japanese encephalitis virus strain SA-14</b>	Anti-Japanese encephalitis virus E glycoprotein antibody [JE1]	Dot, ELISA, ICC/IF	<a href="#">ab41671</a>
	Anti-Japanese encephalitis virus NS1 glycoprotein antibody [JN1]	ELISA, ICC/IF, WB	<a href="#">ab41651</a>

# Other viruses (continued)

Organism	Product	Application	Cat. No.
<b>Japanese encephalitis virus strain SA-14 (continued)</b>	Recombinant Japanese encephalitis virus NS1 glycoprotein (His tag)	SDS-PAGE	<a href="#">ab218555</a>
	Anti-Japanese encephalitis virus NS1 glycoprotein antibody [AA11.C11.C9.E8]	ELISA	<a href="#">ab253235</a>
<b>JC polyomavirus</b>	Recombinant JCV Polyomavirus Major Capsid VP1 protein	ELISA, SDS-PAGE, WB	<a href="#">ab74569</a>
	Recombinant JCV Polyomavirus Major Capsid VP1 protein (Tagged)	SDS-PAGE	<a href="#">ab255712</a>
	Recombinant JCV Polyomavirus Major Capsid VP1 protein (Tagged)	SDS-PAGE	<a href="#">ab267928</a>
<b>Junin mammarenavirus</b>	Anti-Nucleoprotein antibody	WB	<a href="#">ab229925</a>
<b>Lake Victoria marburgvirus - Angola2005</b>	Recombinant AMARV GP protein (His tag)	ELISA, SDS-PAGE, WB	<a href="#">ab190126</a>
<b>Lassa virus Josiah</b>	Anti-LASV GP antibody	WB	<a href="#">ab190655</a>
<b>Lymantria dispar multiple nucleopolyhedrovirus</b>	Recombinant Major capsid protein P39 (Tagged)	SDS-PAGE	<a href="#">ab236194</a>
<b>Lymphocytic choriomeningitis virus (strain Armstrong)</b>	Anti-LCMV antibody [M104]	ICC/IF, IHC-Fr, WB	<a href="#">ab31774</a>
<b>Marburg virus - Musoke, Kenya, 1980</b>	Biotin Anti-MARV GP antibody	WB	<a href="#">ab190459</a>
<b>Marek's disease herpesvirus (strain MD11/75C/R2)</b>	Anti-Marek's Disease antibody	ELISA	<a href="#">ab33718</a>
<b>Mayaro virus (strain Brazil)</b>	Recombinant Mayaro Virus VLP protein	SDS-PAGE	<a href="#">ab243284</a>
<b>Measles virus strain Edmonston</b>	Anti-Measles Large Fusion Protein antibody - C-terminal	IHC-P, WB	<a href="#">ab203023</a>
	Anti-Measles nucleoprotein antibody [3E1]	I-ELISA, WB	<a href="#">ab9397</a>
	Anti-Measles nucleoprotein antibody [2D7]	ELISA, WB	<a href="#">ab9882</a>
	Anti-Measles nucleoprotein antibody [2F3]	ELISA, ICC, ICC/IF, WB	<a href="#">ab106292</a>
	Anti-Measles Virus Matrix protein antibody	ELISA, ICC, WB	<a href="#">ab101015</a>

# Other viruses (continued)

Organism	Product	Application	Cat. No.
<b>Measles virus strain Ichinose-B95a</b>	Anti-Measles phosphoprotein antibody [9H4]	ELISA, ICC/IF, WB	<a href="#">ab43820</a>
	Recombinant Measles virus Priorix, Schwarz strain, nucleocapsid protein	ELISA, SDS-PAGE, WB	<a href="#">ab74559</a>
<b>Mumps virus Miyahara vaccine</b>	Anti-Mumps nucleoprotein antibody [8H4]	ICC/IF	<a href="#">ab9876</a>
	Anti-Mumps nucleoprotein antibody [5E3]	I-ELISA, WB	<a href="#">ab9879</a>
	Anti-Mumps nucleoprotein antibody [7B10]	I-ELISA, WB	<a href="#">ab9880</a>
	Recombinant Mumps virus wild-type, Gloucester strain, nucleocapsid protein	ELISA, SDS-PAGE, WB	<a href="#">ab74560</a>
<b>Murine cytomegalovirus (strain K181)</b>	Anti-Cytomegalovirus pp28 antibody [5C3]	ELISA, WB	<a href="#">ab6502</a>
	Recombinant Cytomegalovirus pp28 protein	ELISA, WB	<a href="#">ab43038</a>
<b>Murine polyomavirus strain A2</b>	Recombinant Polyomavirus strain RA Major Capsid VP1 protein	ELISA, SDS-PAGE, WB	<a href="#">ab74571</a>
<b>Newcastle disease virus (strain B1-HITCHNER/47)</b>	Anti-Newcastle disease virus Hemagglutinin-neuraminidase antibody	IHC-P, WB	<a href="#">ab226322</a>
<b>Newcastle disease virus strain HER/33</b>	Recombinant Hemagglutinin neuraminidase protein (Tagged)	SDS-PAGE	<a href="#">ab236804</a>
<b>Nipah virus</b>	Recombinant Nipah Virus Glycoprotein F (Fc Chimera)	SDS-PAGE	<a href="#">ab256443</a>
	Recombinant Nipah Virus Glycoprotein F (Fc Chimera)	SDS-PAGE	<a href="#">ab256444</a>
<b>Poliovirus type 2 strain Lansing</b>	Anti-Poliovirus (type 1-3) antibody	ICC/IF	<a href="#">ab22450</a>
	HRP Anti-Poliovirus (type 1-3) antibody	ICC/IF	<a href="#">ab23500</a>
<b>Porcine circovirus 2</b>	Anti-Porcine circovirus antibody	IHC-P, WB	<a href="#">ab183908</a>
<b>Rabies virus CVS-11</b>	Recombinant Rabies virus Rabies Matrix Protein (Tagged)	SDS-PAGE	<a href="#">ab236803</a>
<b>Rabies virus ERA</b>	FITC Anti-Rabies Virus Glycoprotein antibody	ELISA	<a href="#">ab193407</a>
	HRP Anti-Rabies Virus Glycoprotein antibody	ELISA	<a href="#">ab193430</a>
	Recombinant Rabies Virus Glycoprotein (His tag)	SDS-PAGE	<a href="#">ab225663</a>

# Other viruses (continued)

Organism	Product	Application	Cat. No.
<b>Rabies virus India</b>	Recombinant Rabies virus (Strain India) (RABV) G protein (Tagged)	SDS-PAGE	<a href="#">ab225593</a>
<b>Reston ebolavirus - Reston</b>	Anti-Reston virus Nucleoprotein antibody	WB	<a href="#">ab224744</a>
<b>Reston ebolavirus - Reston (1989)</b>	Recombinant REBOV GP protein	SDS-PAGE, WB	<a href="#">ab190132</a>
	Anti-REBOV GP antibody	WB	<a href="#">ab190658</a>
<b>Rhesus cytomegalovirus strain 68-1</b>	Recombinant Cytomegalovirus Envelope glycoprotein B (Tagged)	SDS-PAGE	<a href="#">ab236276</a>
<b>Rift valley fever virus (strain ZH-548 M12)</b>	Anti-RVSV antibody	WB	<a href="#">ab190472</a>
<b>Rubella virus strain Cendehill</b>	HRP Anti-Rubella Virions antibody	ICC	<a href="#">ab20944</a>
	Anti-Rubella Virions antibody	ELISA, ICC/IF, Inhibition	<a href="#">ab21207</a>
	FITC Anti-Rubella Virions antibody	ELISA, ICC	<a href="#">ab31437</a>
<b>Rubella virus strain M33</b>	Recombinant Rubella Virus E2 protein	ELISA, WB	<a href="#">ab43033</a>
	Recombinant Rubella Virus E2 protein	ELISA, SDS-PAGE, WB	<a href="#">ab107948</a>
	Recombinant Rubellavirus C protein	ELISA, WB	<a href="#">ab49040</a>
<b>Rubella virus strain Therien</b>	Anti-Rubella Virus capsid antibody [9B11]	I-ELISA, WB	<a href="#">ab34749</a>
	Recombinant Rubella Virus capsid protein	ELISA, WB	<a href="#">ab43034</a>
	Recombinant Rubella Virus capsid protein	ELISA, SDS-PAGE, WB	<a href="#">ab74574</a>
	Recombinant Rubella virus E1 protein	ELISA, WB	<a href="#">ab107947</a>
<b>Rubella virus strain TO-336</b>	Recombinant Rubella Virus gpE1 protein	ELISA, WB	<a href="#">ab43032</a>
<b>SARS coronavirus</b>	Anti-Protein 7a antibody [3C9] - Coronavirus	ICC/IF, WB	<a href="#">ab273435</a>
	Recombinant Human coronavirus SARS CoV Envelope protein	ELISA, SDS-PAGE, WB	<a href="#">ab270833</a>
	Anti-SARS Envelope Protein antibody - Coronavirus	WB	<a href="#">ab22055</a>

# Other viruses (continued)

Organism	Product	Application	Cat. No.
<b>SARS coronavirus (continued)</b>	Recombinant SARS E protein (Coronavirus)	ELISA, WB	<a href="#">ab48949</a>
	Recombinant SARS M protein (Coronavirus)	ELISA, WB	<a href="#">ab48951</a>
	Anti-SARS Nsp3 antibody - Coronavirus	EM, ICC/IF, IP, WB	<a href="#">ab181620</a>
	Recombinant SARS Nucleocapsid Protein (Coronavirus)	ELISA, WB	<a href="#">ab49042</a>
	Recombinant SARS Nucleocapsid Protein (Coronavirus)	SDS-PAGE, WB	<a href="#">ab63311</a>
	Anti-SARS Nucleocapsid Protein antibody [6H3]	ELISA, ICC/IF, IP, sELISA, WB	<a href="#">ab273434</a>
	Anti-SARS Nucleocapsid Protein antibody [CR3018 (03-018)]	ELISA	<a href="#">ab275983</a>
	Anti-SARS Nucleocapsid Protein antibody [CR3009 (03-009)]	ELISA	<a href="#">ab275984</a>
	Recombinant Human coronavirus SARS spike glycoprotein (Tagged)	ELISA, SDS-PAGE, WB	<a href="#">ab270844</a>
	Anti-SARS spike glycoprotein antibody [3A2] - Coronavirus	ICC/IF, WB	<a href="#">ab272420</a>
Anti-SARS spike glycoprotein antibody [1A9]	Flow Cyt, ICC/IF, IP, sELISA, WB	<a href="#">ab273433</a>	
<b>Simian virus 5 (strain W3)</b>	Recombinant Paramyxovirus SV5 Pk protein	FuncS, SDS-PAGE	<a href="#">ab204207</a>
	Agarose Anti-V5 tag antibody	IP	<a href="#">ab1229</a>
	FITC Anti-V5 tag antibody	ICC	<a href="#">ab1274</a>
	HRP Anti-V5 tag antibody	ELISA, ICC, WB	<a href="#">ab1325</a>
	Anti-V5 tag antibody	ELISA, ICC, ICC/IF, WB	<a href="#">ab9113</a>
	Anti-V5 tag antibody	ELISA, IHC-P, IP, WB	<a href="#">ab9116</a>
	Anti-V5 tag antibody	ELISA, ICC, ICC/IF, WB	<a href="#">ab9137</a>
	V5 tag peptide	BL	<a href="#">ab15829</a>
	Biotin Anti-V5 tag antibody	ELISA, WB	<a href="#">ab18617</a>

# Other viruses (continued)

Organism	Product	Application	Cat. No.
<b>Simian virus 5 (strain W3) (continued)</b>	Anti-V5 tag antibody [SV5-Pk1]	ELISA, Flow Cyt, IHC-Fr, IP, RIA, WB	<a href="#">ab27671</a>
	Biotin Anti-V5 tag antibody [SV5-Pk1]	ELISA, IHC-Fr, WB	<a href="#">ab27672</a>
	Anti-AcV5 tag antibody [AcV5]	Dot, ICC, IP	<a href="#">ab49581</a>
	Anti-V5 tag antibody [E10]	ELISA, ICC/IF, IHC-Fr, IHC-P, WB	<a href="#">ab53418</a>
	PE Anti-V5 tag antibody	Flow Cyt, sELISA	<a href="#">ab72480</a>
	SureLight® APC Anti-V5 tag antibody	Flow Cyt, sELISA	<a href="#">ab72560</a>
	Anti-V5 tag antibody	ELISA, ICC, IHC-P, WB	<a href="#">ab95038</a>
	HRP Anti-V5 tag antibody [E10/V4RR]	WB	<a href="#">ab173837</a>
	Anti-V5 tag antibody [EPR12989]	WB	<a href="#">ab182008</a>
	Anti-V5 tag antibody [SV5-P-K]	ELISA, ICC/IF, IHC-Fr, IP, RIA, WB	<a href="#">ab206557</a>
	Anti-V5 tag antibody [SV5-P-K]	ELISA, ICC/IF, IHC-Fr, IP, RIA, WB	<a href="#">ab206558</a>
	Anti-V5 tag antibody [SV5-P-K]	ELISA, ICC/IF, IHC-Fr, IP, RIA, WB	<a href="#">ab206559</a>
	Anti-V5 tag antibody [SV5-P-K]	ELISA, ICC/IF, IHC-Fr, IP, RIA, WB	<a href="#">ab206560</a>
	Anti-V5 tag antibody [SV5-P-K]	ELISA, ICC/IF, IHC-Fr, IP, RIA, WB	<a href="#">ab206561</a>
	Anti-V5 tag antibody [SV5-P-K]	ELISA, ICC/IF, IHC-Fr, IP, RIA, WB	<a href="#">ab206562</a>
	Anti-V5 tag antibody [SV5-P-K]	ELISA, ICC/IF, IHC-Fr, IP, RIA, WB	<a href="#">ab206565</a>
	Anti-V5 tag antibody [SV5-P-K]	ELISA, ICC/IF, IHC-Fr, IP, RIA, WB	<a href="#">ab206566</a>
	Anti-V5 tag antibody [SV5-P-K]	ELISA, ICC/IF, IHC-Fr, IP, RIA, WB	<a href="#">ab206571</a>
	Anti-V5 tag antibody [EPR12989] - BSA and Azide free	WB	<a href="#">ab250573</a>
	<b>Simian virus 40</b>	Recombinant Simian Virus 40 (SV40) Simian Virus 40 Major Capsid VP1 protein	ELISA, SDS-PAGE, WB
Recombinant Simian Virus 40 (SV40) SV40 Large T Antigen protein		SDS-PAGE	<a href="#">ab82118</a>
Anti-SV40 T-antigen antibody [PAb416]		ICC, ICC/IF, IHC-P, IP, WB	<a href="#">ab16879</a>



# Other viruses (continued)

Organism	Product	Application	Cat. No.
<b>Simian virus 40 (continued)</b>	Anti-SV40 T-antigen antibody [LP7N]	IHC-Fr	<a href="#">ab43234</a>
	Anti-SV40 VP2 + VP3 antibody	WB	<a href="#">ab53983</a>
<b>Sudan ebolavirus - Uganda (2000)</b>	Anti-SEBOV GP antibody	WB	<a href="#">ab190653</a>
	Recombinant SEBOV GP protein (His tag)	SDS-PAGE	<a href="#">ab267890</a>
<b>Suid herpesvirus 1 (strain Indiana-Funkhauser / Becker)</b>	Anti-Pseudorabies Virus antibody	ICC, IHC-Fr, WB	<a href="#">ab3534</a>
<b>Tick-borne encephalitis virus (WESTERN SUBTYPE)</b>	Recombinant Tick-Borne Encephalitis Virus NS1 protein (His tag)	SDS-PAGE	<a href="#">ab218554</a>
<b>Tobacco etch virus</b>	Recombinant EN-TEV Protease (mutated S219N) protein (Tagged-His Tag)	FuncS, SDS-PAGE	<a href="#">ab134877</a>
	Recombinant EN-TEV Protease protein (Active)	FuncS, SDS-PAGE	<a href="#">ab269033</a>
	Anti-P1 Protease antibody	WB	<a href="#">ab175353</a>
<b>Tobacco vein mottling virus</b>	Recombinant C4 Protease protein	FuncS, SDS-PAGE	<a href="#">ab134862</a>
<b>Vaccinia virus Copenhagen</b>	Recombinant vaccinia virus B18R protein	FuncS, SDS-PAGE	<a href="#">ab190383</a>
	Recombinant vaccinia virus B18R protein (Active)	FuncS, SDS-PAGE	<a href="#">ab219894</a>
<b>Vaccinia virus WR Smallpox B5R</b>	Anti-Smallpox B5R antibody	WB	<a href="#">ab53309</a>
<b>Vesicular stomatitis Indiana virus (strain 94GUB Central America)</b>	Recombinant RNA directed RNA polymerase L protein (His tag)	SDS-PAGE	<a href="#">ab239435</a>
<b>Vesicular stomatitis Indiana virus strain Orsay</b>	Anti-VSV-G tag antibody	ICC, ICC/IF, IP, WB	<a href="#">ab1874</a>
	HRP Anti-VSV-G tag antibody	ELISA, WB	<a href="#">ab3556</a>
	Anti-VSV-G tag antibody	ELISA, ICC, IP, WB	<a href="#">ab3861</a>
	FITC Anti-VSV-G tag antibody	Flow Cyt, ICC	<a href="#">ab3863</a>
	Anti-VSV-G tag antibody	ELISA, ICC, WB	<a href="#">ab19257</a>
	Biotin Anti-VSV-G tag antibody	ELISA, ICC/IF, WB	<a href="#">ab34774</a>

# Other viruses (continued)

Organism	Product	Application	Cat. No.
<b>Vesicular stomatitis Indiana virus strain Orsay (continued)</b>	Anti-VSV-G tag antibody [P5D4]	ICC, IP, WB	<a href="#">ab50549</a>
	Anti-VSV-G tag antibody	WB	<a href="#">ab83196</a>
	Anti-VSV-G tag antibody [EPR12997]	WB	<a href="#">ab183497</a>
	Anti-VSV-G tag antibody [EPR12997] - BSA and Azide free	WB	<a href="#">ab250656</a>
<b>West Nile virus</b>	Anti-West Nile Virus (E protein) antibody	ELISA	<a href="#">ab25886</a>
	Anti-West Nile Virus (E protein) antibody	ELISA	<a href="#">ab25969</a>
	West Nile Virus (E protein) peptide	BL	<a href="#">ab39902</a>
	Recombinant West Nile Virus (E protein)	ELISA, WB	<a href="#">ab48960</a>
	Recombinant West Nile Virus (E protein)	ELISA, SDS-PAGE, WB	<a href="#">ab187238</a>
	Anti-West Nile Virus M glycoprotein antibody	IHC-P, WB	<a href="#">ab22070</a>
	West Nile Virus M glycoprotein peptide	BL, ELISA	<a href="#">ab39904</a>
	Recombinant West Nile Virus NS1 protein	SDS-PAGE	<a href="#">ab190131</a>
	Anti-West Nile Virus NS1 antibody [IC12.E7.G9/01]	ELISA	<a href="#">ab253236</a>
	Anti-West Nile Virus preM antibody	ELISA	<a href="#">ab25888</a>
	Recombinant West Nile Virus preM protein	ELISA, WB	<a href="#">ab49049</a>
	Recombinant West Nile Virus preM protein (Tagged-His Tag)	SDS-PAGE, WB	<a href="#">ab187231</a>
<b>Western equine encephalitis virus</b>	Recombinant Western Equine Encephalitis Virus E3E2 protein (His tag)	ELISA, SDS-PAGE, WB	<a href="#">ab233725</a>
	Recombinant Western Equine Encephalitis Virus E3E2 protein (His tag)	ELISA, SDS-PAGE, WB	<a href="#">ab233726</a>
<b>Yellow fever virus 17D</b>	Anti-Yellow Fever Virus antibody [3576]	ELISA	<a href="#">ab22839</a>
	Anti-Yellow Fever Virus NS1 antibody [HH7.B.D10.B8]	ELISA	<a href="#">ab253237</a>
	Recombinant Yellow Fever Virus NS1 protein	SDS-PAGE	<a href="#">ab190124</a>
<b>Zika virus</b>	Recombinant Zika virus Envelope protein (His tag)	SDS-PAGE	<a href="#">ab256450</a>

## Other viruses (continued)

Organism	Product	Application	Cat. No.
<b>Zika virus (continued)</b>	Anti-Zika Virus NS1 antibody [B4]	sELISA, WB	<a href="#">ab218546</a>
	Anti-Zika Virus NS1 antibody [D11]	sELISA	<a href="#">ab218547</a>
	Anti-Zika Virus NS1 antibody [F9] - BSA and Azide free	ELISA	<a href="#">ab218548</a>
	Recombinant Zika Virus NS1 protein (His tag)	SDS-PAGE	<a href="#">ab218551</a>

# Bacillus

## Bacillus anthracis

Product	Application	Cat. No.
Anti-Anthrax EF/Adenylyl cyclase antibody	ELISA	<a href="#">ab21267</a>
Anti-Bacillus anthracis protective antigen antibody	WB	<a href="#">ab13808</a>
Anti-Bacillus anthracis protective antigen antibody	ELISA	<a href="#">ab21268</a>
Anti-Bacillus anthracis protective antigen antibody [PA6]	ELISA, IP, WB	<a href="#">ab69485</a>
Anti-Lethal factor antibody [5F502.2]	WB	<a href="#">ab13814</a>
Anti-Lethal factor antibody [LF2]	ELISA, IP, WB	<a href="#">ab69486</a>

## Bacillus cereus

Product	Application	Cat. No.
Anti-Bacillus cereus antibody	ICC/IF	<a href="#">ab20556</a>
Anti-Phospholipase C antibody [bc-01]	ELISA, WB	<a href="#">ab243181</a>

## Bacillus licheniformis

Product	Application	Cat. No.
Recombinant Human Subtilisin Carlsberg protein (Tagged)	MS, SDS-PAGE	<a href="#">ab237794</a>

## Bacillus methanolicus

Product	Application	Cat. No.
Recombinant Methanol dehydrogenase (mdh) protein (Tagged)	SDS-PAGE	<a href="#">ab236202</a>
Recombinant Methanol dehydrogenase (mdh) protein (His tag)	SDS-PAGE	<a href="#">ab241262</a>

## Bacillus pumilus SAFR-032

Product	Application	Cat. No.
Anti-Cell division protein ZapA antibody	WB	<a href="#">ab225689</a>

## Bacillus sp. GL1

Product	Application	Cat. No.
Anti-Unsaturated Glucuronyl Hydrolase antibody	WB	<a href="#">ab223483</a>

## Bacillus subtilis subsp. subtilis str. 168

Product	Application	Cat. No.
Biotin Anti-alpha amylase antibody	Dot, ELISA, ICC, IHC-P, WB	<a href="#">ab182874</a>
Anti-alpha amylase antibody	WB	<a href="#">ab182894</a>
Anti-DNA Gyrase A antibody	WB	<a href="#">ab75594</a>
Oxalate Decarboxylase Activity Assay Kit (Colorimetric)		<a href="#">ab196993</a>
Recombinant B. subtilis Penicillin-binding protein 3 (His tag)	SDS-PAGE	<a href="#">ab226275</a>
Recombinant B. subtilis Penicillin-binding protein 4 (His tag)	SDS-PAGE	<a href="#">ab226267</a>
Recombinant B. subtilis Penicillin-binding protein 4* (His tag)	SDS-PAGE	<a href="#">ab226290</a>
Anti-Penicillin-binding protein 4* antibody	WB	<a href="#">ab229943</a>
Anti-Phosphocarrier protein HPr antibody	WB	<a href="#">ab234675</a>
Recombinant B. subtilis Uncharacterized protein YuaB (Active)	FuncS, SDS-PAGE	<a href="#">ab235612</a>

## Bacillus thuringiensis serovar aizawai

Product	Application	Cat. No.
Anti-Bacillus thuringiensis CRY1Ab Toxin antibody	ELISA, IP, WB	<a href="#">ab51586</a>

# Chlamydia

## Chlamydia trachomatis

Product	Application	Cat. No.
Human Anti-Chlamydia trachomatis IgA ELISA Kit	ELISA	<a href="#">ab108718</a>
Human Anti-Chlamydia trachomatis IgG ELISA Kit	ELISA	<a href="#">ab108720</a>
Human Anti-Chlamydia trachomatis IgM ELISA Kit	ELISA	<a href="#">ab108722</a>

## Chlamydia trachomatis D/UW-3/CX

Product	Application	Cat. No.
HRP Anti-Chlamydia trachomatis MOMP antibody	ELISA, WB	<a href="#">ab20798</a>
FITC Anti-Chlamydia trachomatis MOMP antibody	ICC/IF, IHC-P	<a href="#">ab30951</a>
HRP Anti-Chlamydia trachomatis MOMP antibody	ELISA, IHC-Fr, WB	<a href="#">ab68509</a>
Recombinant Chlamydia trachomatis Chlamydia trachomatis MOMP protein (Tagged)	SDS-PAGE	<a href="#">ab226442</a>
Anti-Chlamydia trachomatis MOMP antibody	FM	<a href="#">ab252752</a>
Recombinant Chlamydia trachomatis MOMP protein	ELISA, SDS-PAGE	<a href="#">ab274664</a>
Recombinant Chlamydia trachomatis omcA protein (His tag)	SDS-PAGE	<a href="#">ab224841</a>
Recombinant Chlamydia trachomatis OmcB protein (His tag)	SDS-PAGE	<a href="#">ab224862</a>

## Chlamydia pneumoniae

Product	Application	Cat. No.
Human Anti-Chlamydia pneumoniae IgA ELISA Kit	ELISA	<a href="#">ab108719</a>
Human Anti-Chlamydia pneumoniae IgG ELISA Kit	ELISA	<a href="#">ab108721</a>
Human Anti-Chlamydia pneumoniae IgM ELISA Kit	ELISA	<a href="#">ab108723</a>

# Clostridium

## Clostridium

Product	Application	Cat. No.
Human Anti-Clostridium tetani toxin IgG ELISA Kit	ELISA	<a href="#">ab108771</a>
Clostridium tetani toxin 5S IgG plus ELISA kit	ELISA	<a href="#">ab247204</a>

## Clostridium botulinum

Product	Application	Cat. No.
Anti-BOTOX antibody	Dot, ELISA, WB	<a href="#">ab20436</a>
Anti-BOTOX antibody	ELISA, WB	<a href="#">ab20641</a>
Anti-BOTOX antibody	Dot, ELISA, WB	<a href="#">ab20786</a>
Anti-BOTOX antibody [230F9]	ICC/IF, Inhibition	<a href="#">ab40786</a>
Anti-Clostridium botulinum E Toxoid antibody [209F2]	ICC/IF, Inhibition	<a href="#">ab40787</a>
Anti-Clostridium botulinum Toxin B antibody [GR-3G7]	cELISA, Flow Cyt	<a href="#">ab59715</a>

## Clostridium botulinum A str. Hall

Product	Application	Cat. No.
Recombinant Penicillin-binding protein 1A (His tag)	SDS-PAGE	<a href="#">ab225615</a>
Recombinant Penicillin-binding protein 1A (His tag)	SDS-PAGE	<a href="#">ab225616</a>

## Clostridium botulinum B1 str. Okra

Product	Application	Cat. No.
Anti-Clostridium botulinum B Toxoid antibody	WB	<a href="#">ab83064</a>

## Clostridium pasteurianum

Product	Application	Cat. No.
Recombinant Rubredoxin protein (His tag)	SDS-PAGE	<a href="#">ab225597</a>

## Clostridium perfringens

Product	Application	Cat. No.
Anti-Heat-labile enterotoxin B chain antibody	Dot, ELISA, WB	<a href="#">ab243102</a>

## Clostridium perfringens str. 13

Product	Application	Cat. No.
Anti-Collagenase ColA antibody [cp-02]	WB	<a href="#">ab243106</a>

## Clostridium sp. G0005

Product	Application	Cat. No.
Anti-Clostridium antibody	ICC/IF	<a href="#">ab20447</a>

## Clostridium tetani E88

Product	Application	Cat. No.
Anti-Tetanus Toxin antibody	ELISA, WB	<a href="#">ab53829</a>
Anti-Tetanus Toxin antibody [TH-11]	WB	<a href="#">ab278064</a>
Anti-Tetanus Toxoid antibody	Ie	<a href="#">ab24292</a>
Anti-Tetanus Toxoid antibody [5.1B8]	ELISA	<a href="#">ab26247</a>
Anti-Tetanus Toxoid antibody	ELISA, ID	<a href="#">ab68494</a>
Anti-Tetanus Toxoid antibody [3F6]	cELISA, ELISA	<a href="#">ab191896</a>



# Escherichia coli

## Escherichia coli

Product	Application	Cat. No.
Recombinant <i>E. coli</i> Beta lactamase TEM precursor protein	SDS-PAGE	<a href="#">ab67672</a>
Recombinant <i>E. coli</i> Beta-lactamase CTX-M-1 protein (His tag)	MS, SDS-PAGE	<a href="#">ab226272</a>
Anti-Chloramphenicol Acetyltransferase antibody [CAT-1]	ICC, WB	<a href="#">ab5410</a>
Recombinant <i>E. coli</i> CS6 fimbrial subunit B protein (Tagged)	SDS-PAGE	<a href="#">ab225598</a>
Recombinant <i>E. coli</i> Cytolethal distending toxin subunit B protein (Tagged)	SDS-PAGE	<a href="#">ab225981</a>
Recombinant <i>E. coli</i> <i>E. coli</i> heat labile toxin A protein (Tagged)	SDS-PAGE	<a href="#">ab236935</a>
Anti- <i>E. coli</i> heat labile toxin A antibody [EC01]	WB	<a href="#">ab243105</a>
Recombinant <i>E. coli</i> K99 pilus protein (His tag)	SDS-PAGE	<a href="#">ab224872</a>
Recombinant <i>E. coli</i> K99 pilus protein	SDS-PAGE	<a href="#">ab224876</a>
Recombinant <i>E. coli</i> Hygromycin B kinase protein (Tagged)	SDS-PAGE	<a href="#">ab225588</a>
Recombinant <i>E. coli</i> Hygromycin B kinase protein (His tag)	SDS-PAGE	<a href="#">ab237791</a>
Anti-LT subunit (A + B) antibody	IP, WB	<a href="#">ab188541</a>
Anti-TetR antibody	WB	<a href="#">ab25845</a>

## Escherichia coli 536

Product	Application	Cat. No.
Recombinant <i>E. coli</i> iscS protein (Tagged)	SDS-PAGE	<a href="#">ab238228</a>

## Escherichia coli 55989

Product	Application	Cat. No.
Recombinant <i>E. coli</i> Glyoxylate/hydroxypyruvate reductase A (ghrA) protein (His tag)	SDS-PAGE	<a href="#">ab225639</a>

## Escherichia coli BW2952

Product	Application	Cat. No.
Anti-Lipoate-protein ligase A antibody	WB	<a href="#">ab225683</a>
Recombinant Lipoate-protein ligase A (Tagged)	SDS-PAGE	<a href="#">ab237793</a>

## Escherichia coli CFT073

Product	Application	Cat. No.
Recombinant <i>E. coli</i> ftsZ protein (Tagged)	SDS-PAGE	<a href="#">ab237553</a>
Recombinant <i>E. coli</i> slyD protein	FuncS, SDS-PAGE	<a href="#">ab72847</a>

## Escherichia coli K-12

Target	Product	Application	Cat. No.
<b>30S ribosomal protein S4</b>	Recombinant <i>E. coli</i> 30S ribosomal protein S4 (His tag)	SDS-PAGE	<a href="#">ab240761</a>
<b>Acidic protein MsyB</b>	Recombinant <i>E. coli</i> Acidic protein MsyB (His tag)	SDS-PAGE	<a href="#">ab234974</a>
<b>Ada protein</b>	Anti-Ada protein antibody [ADA-1]	IP, RIA, WB	<a href="#">ab18104</a>
<b>Anaerobic ribonucleoside-triphosphate reductase</b>	Recombinant <i>E. coli</i> Anaerobic ribonucleoside-triphosphate reductase protein (His tag)	SDS-PAGE	<a href="#">ab240767</a>
<b>Aquaporin Z</b>	Recombinant <i>E. coli</i> Aquaporin Z protein (Active)	FuncS, SDS-PAGE	<a href="#">ab235607</a>
<b>ATP-dependent Clp protease adapter protein ClpS</b>	Recombinant <i>E. coli</i> ATP-dependent Clp protease adapter protein ClpS (His tag)	SDS-PAGE	<a href="#">ab237558</a>
<b>bacterial Alkaline Phosphatase</b>	Biotin Anti-bacterial Alkaline Phosphatase antibody	Dot, ELISA, IHC-Fr, IM, WB	<a href="#">ab7321</a>
<b>beta Galactosidase</b>	Anti-beta Galactosidase antibody	ELISA, Flow Cyt, ICC, ICC/IF, IHC-FoFr, IHC-Fr, IHC-FrFl, IHC-P, WB	<a href="#">ab9361</a>
	Anti-beta Galactosidase antibody	ELISA, IP, WB	<a href="#">ab616</a>
	Anti-beta Galactosidase antibody	ICC/IF, IP, WB	<a href="#">ab221199</a>
	Anti-beta Galactosidase antibody	WB	<a href="#">ab12081</a>

## Escherichia coli K-12 (continued)

Target	Product	Application	Cat. No.
<b>beta Galactosidase (continued)</b>	Anti-beta Galactosidase antibody	WB	<a href="#">ab4761</a>
	Anti-beta Galactosidase antibody	WB	<a href="#">ab106567</a>
	Anti-beta Galactosidase antibody [13R4]	Flow Cyt, WB	<a href="#">ab206546</a>
	Anti-beta Galactosidase antibody [DC1 4C7]	ELISA, WB	<a href="#">ab116</a>
	Biotin Anti-beta Galactosidase antibody	Dot, ELISA, IHC-P, WB	<a href="#">ab6645</a>
	Recombinant <i>E. coli</i> beta Galactosidase protein (Tagged)	SDS-PAGE	<a href="#">ab267967</a>
<b>Beta Glucuronidase (GUS)</b>	Anti-beta Glucuronidase (GUS) antibody - Aminoterminal end	WB	<a href="#">ab50148</a>
<b>BirA</b>	Recombinant <i>E. coli</i> BirA protein (Active)	FuncS, SDS-PAGE, WB	<a href="#">ab135015</a>
	Recombinant <i>E. coli</i> BirA protein	Conjugation, Purification, SDS-PAGE	<a href="#">ab198449</a>
	Anti-BirA antibody [6C4c7]	ICC/IF, WB	<a href="#">ab232732</a>
	Anti-BirA antibody [6C4c7] - BSA and Azide free	ICC/IF, WB	<a href="#">ab269579</a>
<b>Chaperone protein HtpG</b>	Anti-Chaperone protein HtpG antibody	WB	<a href="#">ab225994</a>
	Recombinant Chaperone protein HtpG (Tagged)	SDS-PAGE	<a href="#">ab238359</a>
<b>cysH</b>	Recombinant <i>E. coli</i> cysH protein	MS, SDS-PAGE	<a href="#">ab106888</a>
<b>deoC</b>	Recombinant <i>E. coli</i> deoC protein	MS, SDS-PAGE	<a href="#">ab106864</a>
<b>Disulfide-bond isomerase</b>	Recombinant <i>E. coli</i> Disulfide-bond isomerase protein	SDS-PAGE	<a href="#">ab51284</a>
	Recombinant <i>E. coli</i> Disulfide-bond isomerase protein	MS, SDS-PAGE	<a href="#">ab229511</a>
<b>Disulphide oxidoreductase</b>	Recombinant <i>E. coli</i> Disulphide oxidoreductase protein	WB	<a href="#">ab157065</a>
<b>DNA ligase</b>	Biotin Anti-DNA ligase antibody	WB	<a href="#">ab193493</a>
	HRP Anti-DNA ligase antibody	WB	<a href="#">ab193513</a>
<b>DNA mismatch repair protein MutL</b>	Anti-DNA mismatch repair protein MutL antibody	WB	<a href="#">ab225917</a>
<b>DNA polymerase I</b>	Anti-DNA polymerase I antibody	IP, WB	<a href="#">ab188424</a>

## Escherichia coli K-12 (continued)

Target	Product	Application	Cat. No.
<b>DNA repair protein RecO</b>	Recombinant <i>E. coli</i> DNA repair protein RecO (Tagged)	SDS-PAGE	<a href="#">ab237749</a>
<b>DnaK</b>	Recombinant <i>E. coli</i> DnaK protein	WB	<a href="#">ab157041</a>
	Recombinant <i>E. coli</i> DnaK protein (His tag)	SDS-PAGE	<a href="#">ab241271</a>
<b>Ethanolamine ammonia lyase</b>	HRP Anti- <i>E. coli</i> ethanolamine ammonia lyase light chain antibody	WB	<a href="#">ab193626</a>
	Anti- <i>E. coli</i> ethanolamine ammonia lyase light chain antibody	WB	<a href="#">ab193642</a>
<b>Ecotin</b>	Recombinant <i>E. coli</i> Ecotin protein	SDS-PAGE	<a href="#">ab92769</a>
	Recombinant <i>E. coli</i> Ecotin protein	MS, SDS-PAGE	<a href="#">ab103303</a>
	Anti-Ecotin antibody	WB	<a href="#">ab231348</a>
<b>fabB</b>	Recombinant <i>E. coli</i> fabB protein (Tagged)	MS, SDS-PAGE	<a href="#">ab237546</a>
<b>FimA</b>	Recombinant <i>E. coli</i> FimA protein (His tag)	SDS-PAGE	<a href="#">ab225606</a>
<b>FimC</b>	Recombinant <i>E. coli</i> fimC protein	MS, SDS-PAGE	<a href="#">ab104677</a>
<b>FimH</b>	Recombinant <i>E. coli</i> fimH protein (Tagged)	MS, SDS-PAGE	<a href="#">ab236920</a>
	Recombinant <i>E. coli</i> fimH protein (His tag)	SDS-PAGE	<a href="#">ab238375</a>
<b>Flagellin</b>	Anti-Flagellin antibody	ICC/IF, WB	<a href="#">ab93713</a>
	Biotin Anti-Flagellin antibody	ELISA	<a href="#">ab193301</a>
<b>fur</b>	Recombinant <i>E. coli</i> fur protein	SDS-PAGE	<a href="#">ab78816</a>
<b>glsA1</b>	Recombinant <i>E. coli</i> glsA1 protein	MS, SDS-PAGE	<a href="#">ab107143</a>
<b>Glutamate cysteine ligase gshA</b>	Recombinant <i>E. coli</i> Glutamate cysteine ligase gshA protein (His tag)	SDS-PAGE	<a href="#">ab225613</a>
<b>Glutamate/aspartate import solutebinding protein</b>	Recombinant <i>E. coli</i> Glutamate/aspartate import solute-binding protein (Tagged)	SDS-PAGE	<a href="#">ab226276</a>
<b>Glycerol dehydrogenase</b>	Recombinant <i>E. coli</i> Glycerol dehydrogenase protein	FuncS, MS, SDS-PAGE	<a href="#">ab201880</a>
<b>Glycerol kinase</b>	Recombinant <i>E. coli</i> Glycerol kinase protein	SDS-PAGE	<a href="#">ab202207</a>
	Anti-Glycerol kinase antibody	WB	<a href="#">ab193521</a>
<b>gor</b>	Recombinant <i>E. coli</i> gor protein	MS, SDS-PAGE	<a href="#">ab123214</a>

## Escherichia coli K-12 (continued)

Target	Product	Application	Cat. No.
<b>groEL</b>	Anti-groEL antibody [9A1/2]	IP, WB	<a href="#">ab82592</a>
	Anti-groEL antibody	WB	<a href="#">ab90522</a>
	Recombinant <i>E. coli</i> groEL protein	SDS-PAGE	<a href="#">ab51307</a>
	Recombinant <i>E. coli</i> groEL protein	EIA, ELISA, FuncS, WB	<a href="#">ab113176</a>
	Recombinant <i>E. coli</i> groEL protein	FuncS	<a href="#">ab157346</a>
<b>GrpE</b>	Recombinant <i>E. coli</i> GrpE protein	SDS-PAGE	<a href="#">ab63839</a>
<b>grxB</b>	Recombinant <i>E. coli</i> grxB protein	MS, SDS-PAGE	<a href="#">ab106883</a>
<b>hchA</b>	Recombinant <i>E. coli</i> hchA protein	MS, SDS-PAGE	<a href="#">ab106879</a>
<b>L-lactate dehydrogenase [cytochrome]</b>	Recombinant <i>E. coli</i> L-lactate dehydrogenase [cytochrome] protein	SDS-PAGE	<a href="#">ab126689</a>
<b>LDC</b>	Biotin Anti-LDC antibody	WB	<a href="#">ab193351</a>
<b>LexA DNA Binding Region</b>	Anti-LexA DNA Binding Region antibody	IP, WB	<a href="#">ab14553</a>
	Anti-LexA DNA Binding Region antibody	IP, WB	<a href="#">ab50953</a>
	Anti-LexA DNA Binding Region antibody	ChIP, ICC/IF, IP, WB	<a href="#">ab174384</a>
<b>Lon protease</b>	Recombinant <i>E. coli</i> Lon protease protein	HPLC, SDS-PAGE	<a href="#">ab151921</a>
<b>Maltose Binding Protein</b>	Anti-Maltose Binding Protein antibody [EPR4744]	WB	<a href="#">ab119994</a>
	Anti-Maltose Binding Protein antibody [EPR4745]	WB	<a href="#">ab133308</a>
	Anti-Maltose Binding Protein antibody	ELISA, WB	<a href="#">ab203583</a>
	Anti-Maltose Binding Protein antibody [EPR4744] - BSA and Azide free	WB	<a href="#">ab247952</a>
	Anti-Maltose Binding Protein antibody [EPR4745] - BSA and Azide free	WB	<a href="#">ab248461</a>
	Recombinant <i>E. coli</i> Maltose Binding Protein	SDS-PAGE	<a href="#">ab219252</a>
	Recombinant <i>E. coli</i> MBP protein	MS, SDS-PAGE	<a href="#">ab167888</a>
<b>mdh</b>	Recombinant <i>E. coli</i> mdh protein	MS, SDS-PAGE	<a href="#">ab124594</a>
	Recombinant <i>E. coli</i> mdh protein	FuncS, SDS-PAGE	<a href="#">ab168033</a>

## Escherichia coli K-12 (continued)

Target	Product	Application	Cat. No.
<b>Metalloprotease LoIP</b>	Recombinant <i>E. coli</i> Metalloprotease LoIP protein (His tag)	SDS-PAGE	<a href="#">ab236176</a>
<b>metC</b>	Recombinant <i>E. coli</i> metC protein (His tag)	MS, SDS-PAGE	<a href="#">ab226431</a>
<b>Murein hydrolase activator NlpD</b>	Recombinant <i>E. coli</i> Murein hydrolase activator NlpD protein (His tag)	SDS-PAGE	<a href="#">ab225594</a>
<b>mutM</b>	Recombinant <i>E. coli</i> mutM protein	MS, SDS-PAGE	<a href="#">ab124310</a>
<b>mutY</b>	Recombinant <i>E. coli</i> mutY protein	MS, SDS-PAGE	<a href="#">ab156319</a>
<b>nanA</b>	Recombinant <i>E. coli</i> nanA protein	MS, SDS-PAGE	<a href="#">ab106874</a>
<b>Ndk</b>	Recombinant <i>E. coli</i> ndk protein	MS, SDS-PAGE	<a href="#">ab123167</a>
<b>Nitroreductase</b>	Recombinant <i>E. coli</i> Nitroreductase protein	MS, SDS-PAGE	<a href="#">ab97948</a>
<b>Nth</b>	Recombinant <i>E. coli</i> nth protein	MS, SDS-PAGE	<a href="#">ab107150</a>
<b>Outer membrane protein C</b>	Recombinant <i>E. coli</i> Outer membrane protein C (Tagged)	MS, SDS-PAGE	<a href="#">ab225590</a>
	Recombinant <i>E. coli</i> Outer membrane protein C (His tag)	SDS-PAGE	<a href="#">ab236921</a>
<b>Periplasmic murein peptide-binding protein</b>	Recombinant <i>E. coli</i> Periplasmic murein peptide-binding protein (Tagged)	SDS-PAGE	<a href="#">ab224855</a>
<b>phrB</b>	Recombinant <i>E. coli</i> phrB protein	SDS-PAGE	<a href="#">ab156352</a>
<b>Pol V</b>	Anti-Pol V antibody	WB	<a href="#">ab91343</a>
<b>POX</b>	Biotin Anti-POX antibody	ELISA, WB	<a href="#">ab193673</a>
<b>ppa</b>	Recombinant <i>E. coli</i> ppa protein	MS, SDS-PAGE	<a href="#">ab109942</a>
<b>Probable deoxycholate-binding periplasmic protein YgiS</b>	Recombinant <i>E. coli</i> Probable deoxycholate-binding periplasmic protein YgiS (His tag)	SDS-PAGE	<a href="#">ab225965</a>
<b>Protein YebF</b>	Recombinant <i>E. coli</i> Protease 7 protein (His tag)	SDS-PAGE	<a href="#">ab225585</a>
	Recombinant <i>E. coli</i> Protein YebF (Tagged)	SDS-PAGE	<a href="#">ab226284</a>
<b>pykF</b>	Recombinant <i>E. coli</i> pykF protein	SDS-PAGE	<a href="#">ab124561</a>
<b>RecQ DNA Helicase</b>	Recombinant <i>E. coli</i> RecQ DNA Helicase protein (Active)	FuncS, SDS-PAGE	<a href="#">ab63813</a>
	FITC Anti-RecQ DNA Helicase antibody	WB	<a href="#">ab193021</a>
<b>RNA polymerase beta</b>	Anti-RNA polymerase beta antibody [EPR18704]	IP, WB	<a href="#">ab191598</a>

## Escherichia coli K-12 (continued)

Target	Product	Application	Cat. No.
<b>RNA polymerase beta (continued)</b>	Anti-RNA polymerase beta antibody [EPR18704] - BSA and Azide free	IP, WB	<a href="#">ab240324</a>
<b>RNase H</b>	Recombinant <i>E. coli</i> RNase H protein	FuncS, SDS-PAGE	<a href="#">ab91360</a>
<b>rpsB</b>	Anti-rpsB antibody	ELISA, WB	<a href="#">ab193293</a>
<b>RuvA</b>	Anti-RuvA antibody	IP, WB	<a href="#">ab18576</a>
	Recombinant <i>E. coli</i> RuvA protein (Active)	FuncS, SDS-PAGE	<a href="#">ab63819</a>
<b>secB</b>	Recombinant <i>E. coli</i> secB protein	SDS-PAGE	<a href="#">ab85490</a>
<b>Skp</b>	Recombinant <i>E. coli</i> Skp protein	MS, SDS-PAGE	<a href="#">ab97397</a>
<b>sodA</b>	Recombinant <i>E. coli</i> sodA protein	MS, SDS-PAGE	<a href="#">ab106893</a>
<b>surA</b>	Recombinant <i>E. coli</i> surA protein	FuncS, MS, SDS-PAGE	<a href="#">ab99241</a>
<b>Thermosensitive gluconokinase</b>	Recombinant <i>E. coli</i> Thermosensitive gluconokinase protein	MS, SDS-PAGE	<a href="#">ab187431</a>
	Recombinant <i>E. coli</i> Thermosensitive gluconokinase protein	FuncS, MS, SDS-PAGE	<a href="#">ab208297</a>
<b>Thiol:disulfide interchange protein dsbE</b>	Recombinant <i>E. coli</i> Thiol:disulfide interchange protein dsbE	SDS-PAGE	<a href="#">ab87496</a>
<b>Thiol:disulfide interchange protein dsbG</b>	Recombinant <i>E. coli</i> Thiol:disulfide interchange protein dsbG	SDS-PAGE	<a href="#">ab87495</a>
<b>Thioredoxin 1</b>	Recombinant <i>E. coli</i> Thioredoxin 1 protein	FuncS, SDS-PAGE	<a href="#">ab167980</a>
<b>Thioredoxin reductase</b>	Recombinant <i>E. coli</i> Thioredoxin reductase protein	FuncS, MS, SDS-PAGE	<a href="#">ab95910</a>
<b>tpx</b>	Recombinant <i>E. coli</i> tpx protein	MS, SDS-PAGE	<a href="#">ab107132</a>
<b>Transcriptional regulatory protein PhoP</b>	Recombinant <i>E. coli</i> Transcriptional regulatory protein PhoP (Tagged)	SDS-PAGE	<a href="#">ab236170</a>
	Recombinant <i>E. coli</i> Transcriptional regulatory protein PhoP (Tagged)	MS, SDS-PAGE	<a href="#">ab240864</a>
<b>Transposase InsE for insertion sequence IS3A</b>	Recombinant <i>E. coli</i> Transposase InsE for insertion sequence IS3A protein (Fc Chimera)	SDS-PAGE	<a href="#">ab267915</a>

## Escherichia coli K-12 (continued)

Target	Product	Application	Cat. No.
<b>tRNA threonylcarbamoyladenosine biosynthesis protein TsaE</b>	Recombinant <i>E. coli</i> tRNA threonylcarbamoyladenosine biosynthesis protein TsaE	SDS-PAGE	<a href="#">ab225604</a>
	Recombinant <i>E. coli</i> tRNA threonylcarbamoyladenosine biosynthesis protein TsaE (Tagged)	SDS-PAGE	<a href="#">ab267919</a>
<b>Tryptophanase</b>	Recombinant <i>E. coli</i> Tryptophanase protein	SDS-PAGE	<a href="#">ab202171</a>
<b>udp</b>	Recombinant <i>E. coli</i> udp protein	MS, SDS-PAGE	<a href="#">ab99262</a>

## Escherichia coli str. K-12 substr. DH10B

Product	Application	Cat. No.
Anti-Carbon storage regulator antibody	WB	<a href="#">ab225947</a>

## Escherichia coli O127:H6 str. E2348/69

Target	Product	Application	Cat. No.
<b>beta Galactosidase</b>	Anti-beta Galactosidase antibody	ELISA, Flow Cyt, ICC, ICC/IF, IHC-FoFr, IHC-Fr, IHC-FrFl, IHC-P, WB	<a href="#">ab9361</a>
	Anti-beta Galactosidase antibody	ELISA, IP, WB	<a href="#">ab616</a>
	Anti-beta Galactosidase antibody	ICC/IF, IP, WB	<a href="#">ab221199</a>
	Anti-beta Galactosidase antibody	WB	<a href="#">ab12081</a>
	Anti-beta Galactosidase antibody	WB	<a href="#">ab4761</a>
	Anti-beta Galactosidase antibody	WB	<a href="#">ab106567</a>
	Anti-beta Galactosidase antibody [13R4]	Flow Cyt, WB	<a href="#">ab206546</a>
	Anti-beta Galactosidase antibody [DC1 4C7]	ELISA, WB	<a href="#">ab116</a>
	Biotin Anti-beta Galactosidase antibody	Dot, ELISA, IHC-P, WB	<a href="#">ab6645</a>
	Recombinant <i>E. coli</i> beta Galactosidase protein (Tagged)	SDS-PAGE	<a href="#">ab267967</a>



## Escherichia coli O127:H6 str. E2348/69 (continued)

Target	Product	Application	Cat. No.
<b>Trigger factor (tig)</b>	Recombinant <i>E. coli</i> Trigger factor (tig) protein (His tag)	SDS-PAGE	<a href="#">ab241442</a>

## Escherichia coli O157:H7

Target	Product	Application	Cat. No.
<b>Acetate Kinase</b>	Recombinant <i>E. coli</i> Acetate Kinase protein	MS, SDS-PAGE	<a href="#">ab187412</a>
	Recombinant <i>E. coli</i> Acetate Kinase protein (Tagged)	SDS-PAGE	<a href="#">ab268312</a>
	Recombinant <i>E. coli</i> Acetate Kinase protein (His tag)	SDS-PAGE	<a href="#">ab268313</a>
<b>DNA binding protein HU alpha</b>	Recombinant <i>E. coli</i> DNA binding protein HU alpha (Tagged)	SDS-PAGE	<a href="#">ab225611</a>
<b>Gamma Hydroxybutyrate CoA Transferase</b>	Recombinant Human Gamma Hydroxybutyrate CoA Transferase protein	ELISA, SDS-PAGE	<a href="#">ab166874</a>
<b>groES</b>	Anti-groES antibody	IP, WB	<a href="#">ab69823</a>
	Recombinant <i>E. coli</i> groES protein	SDS-PAGE	<a href="#">ab86440</a>
<b>nusA</b>	Recombinant <i>E. coli</i> nusA protein	SDS-PAGE	<a href="#">ab78932</a>
<b>PPIA</b>	Recombinant <i>E. coli</i> PPIA protein (His tag)	SDS-PAGE	<a href="#">ab225608</a>
<b>RuvC</b>	Anti-RuvC antibody	IP, WB	<a href="#">ab18582</a>
	Recombinant <i>E. coli</i> RuvC protein (Active)	ELISA, FuncS, SDS-PAGE, WB	<a href="#">ab63828</a>

# Mycobacteria

## Mycobacteria

Product	Application	Cat. No.
Anti-Mycobacterium tuberculosis antibody	IHC-P	<a href="#">ab905</a>
Anti-Mycobacterium tuberculosis antibody	ICC/IF, IHC-P	<a href="#">ab214721</a>
Biotin Anti-Mycobacterium tuberculosis antibody	IHC-P	<a href="#">ab20027</a>
FITC Anti-Mycobacterium tuberculosis antibody	ICC/IF, IHC-P	<a href="#">ab20962</a>
HRP Anti-Mycobacterium tuberculosis antibody	IHC-P	<a href="#">ab21189</a>

## Mycobacterium bovis AF2122/97

Product	Application	Cat. No.
Recombinant 14 kDa antigen protein (His tag)	SDS-PAGE	<a href="#">ab235013</a>

## Mycobacterium kansasii

Product	Application	Cat. No.
Recombinant Diacylglycerol acyltransferase/mycolyltransferase Ag85B protein (Tagged)	MS, SDS-PAGE	<a href="#">ab236191</a>

## Mycobacterium smegmatis

Product	Application	Cat. No.
Recombinant DNA protection during starvation protein	MS, SDS-PAGE, WB	<a href="#">ab203523</a>
Recombinant DNA protection during starvation protein (Tagged)	SDS-PAGE	<a href="#">ab224850</a>

## Mycobacterium tuberculosis CDC1551

Target	Product	Application	Cat. No.
<b>Ag85A</b>	Anti-TB Ag85A antibody	ELISA, WB	<a href="#">ab193499</a>
	Biotin Anti-TB Ag85A antibody	WB	<a href="#">ab193509</a>
	FITC Anti-TB Ag85A antibody	WB	<a href="#">ab193480</a>
	HRP Anti-TB Ag85A antibody	ELISA, WB	<a href="#">ab193523</a>
	Recombinant Mycobacterium tuberculosis TB Ag85A protein (His tag)	MS, SDS-PAGE	<a href="#">ab240770</a>
	Recombinant Mycobacterium tuberculosis TB Ag85A protein	SDS-PAGE	<a href="#">ab124604</a>
<b>Ag85B</b>	Anti-Mycobacterium tuberculosis Ag85 antibody	ELISA, WB	<a href="#">ab36731</a>
	Anti-Mycobacterium tuberculosis Ag85B antibody	ELISA, IHC-P, WB	<a href="#">ab43019</a>
	Recombinant Mycobacterium tuberculosis Ag85B protein	SDS-PAGE	<a href="#">ab83471</a>
<b>L-alanine dehydrogenase</b>	Anti-Mycobacterium L-alanine dehydrogenase antibody [WHO no. IT-46]	ELISA, WB	<a href="#">ab51804</a>
<b>CFP10</b>	Anti-CFP10 antibody	WB	<a href="#">ab45074</a>
<b>DNA Gyrase B</b>	Anti-DNA Gyrase B antibody [7D3]	WB	<a href="#">ab75586</a>
	Anti-DNA Gyrase B antibody [9G8]	WB	<a href="#">ab75593</a>
	Anti-DNA Gyrase B antibody	WB	<a href="#">ab75596</a>
<b>MPT51/MPB51 antigen</b>	Recombinant Mycobacterium tuberculosis MPT51/MPB51 antigen protein (Tagged)	MS, SDS-PAGE	<a href="#">ab237747</a>
<b>MPT64</b>	Anti-MPT64 antibody	ELISA, WB	<a href="#">ab193435</a>
	HRP Anti-MPT64 antibody	WB	<a href="#">ab193387</a>
	Recombinant Mycobacterium tuberculosis MPT64 protein (His tag)	SDS-PAGE	<a href="#">ab225589</a>
	Recombinant Mycobacterium tuberculosis MPT64 protein (His tag)	MS, SDS-PAGE	<a href="#">ab226277</a>
	Recombinant Mycobacterium tuberculosis MPT64 protein (His tag)	SDS-PAGE	<a href="#">ab235017</a>
<b>Mycothione reductase</b>	Recombinant Mycobacterium tuberculosis Mycothione reductase protein (Tagged)	MS, SDS-PAGE	<a href="#">ab238282</a>

## Mycobacterium tuberculosis H37Rv

Target	Product	Application	Cat. No.
<b>Ag85</b>	Recombinant Mycobacterium tuberculosis Ag85 protein (His tag)	MS, SDS-PAGE	<a href="#">ab225596</a>
	Recombinant Mycobacterium tuberculosis Ag85 protein (His tag)	SDS-PAGE	<a href="#">ab236183</a>
<b>Ag85A</b>	Anti-TB Ag85A antibody	ELISA, WB	<a href="#">ab193499</a>
	Biotin Anti-TB Ag85A antibody	WB	<a href="#">ab193509</a>
	FITC Anti-TB Ag85A antibody	WB	<a href="#">ab193480</a>
	HRP Anti-TB Ag85A antibody	ELISA, WB	<a href="#">ab193523</a>
	Recombinant Mycobacterium tuberculosis TB Ag85A protein	SDS-PAGE	<a href="#">ab124604</a>
	Recombinant Mycobacterium tuberculosis TB Ag85A protein (His tag)	MS, SDS-PAGE	<a href="#">ab240770</a>
<b>Alpha-crystallin hspX</b>	Anti-Alpha-crystallin hspX antibody	WB	<a href="#">ab231177</a>
<b>ESAT6</b>	Anti-ESAT6 antibody	WB	<a href="#">ab45073</a>
	Recombinant Mycobacterium tuberculosis ESAT6 protein	SDS-PAGE	<a href="#">ab124574</a>
<b>ESAT-6-like protein EsxR</b>	Anti-ESAT-6-like protein EsxR antibody	WB	<a href="#">ab231193</a>
<b>Hypoxic response protein 1</b>	Recombinant Mycobacterium tuberculosis Hypoxic response protein 1 (Tagged)	MS, SDS-PAGE	<a href="#">ab238290</a>
<b>Malate synthase G</b>	Anti-Malate synthase G antibody	WB	<a href="#">ab231199</a>
<b>Mycobacterium tuberculosis 16kDa</b>	Anti-Mycobacterium tuberculosis 16kDa antibody	WB	<a href="#">ab193422</a>
	Biotin Anti-Mycobacterium tuberculosis 16kDa antibody	WB	<a href="#">ab193390</a>
<b>Phosphate-binding protein PstS 1</b>	HRP Anti-Phosphate-binding protein PstS 1 antibody	WB	<a href="#">ab193412</a>
<b>Putative amidase AmiB2</b>	Recombinant Mycobacterium tuberculosis Putative amidase AmiB2 protein (His tag)	SDS-PAGE	<a href="#">ab225586</a>
<b>Rv2654c</b>	Anti-Rv2654c antibody	WB	<a href="#">ab231183</a>

# Salmonella

## Salmonella enterica subsp. enterica serovar Heidelberg str. SL476

Product	Application	Cat. No.
Recombinant Salmonella heidelberg D-serine dehydratase (dsdA) protein (His tag)	MS, SDS-PAGE	<a href="#">ab225614</a>

## Salmonella enterica subsp. enterica serovar Typhi

Product	Application	Cat. No.
Recombinant Salmonella typhi DNA-binding protein HU-beta (His tag)	SDS-PAGE	<a href="#">ab225592</a>
Recombinant Salmonella typhi OmpA protein (His tag)	SDS-PAGE	<a href="#">ab240774</a>
Recombinant Salmonella typhi uspA protein (His tag)	SDS-PAGE	<a href="#">ab267923</a>

## Salmonella enterica subsp. enterica serov

Product	Application	Cat. No.
Recombinant Salmonella typhimurium D-galactose binding periplasmic protein (His tag)	MS, SDS-PAGE	<a href="#">ab226235</a>
Recombinant Salmonella typhimurium PrgI protein (His tag)	MS, SDS-PAGE	<a href="#">ab237560</a>

# Staphylococcus

## Staphylococcus aureus

Target	Product	Application	Cat. No.
<b>Staphylococcus aureus</b>	Anti-Staphylococcus aureus antibody	ICC/IF, IHC-Fr	<a href="#">ab20920</a>
	Anti-Staphylococcus aureus antibody	ELISA, WB	<a href="#">ab73962</a>
	Biotin Anti-Staphylococcus aureus antibody	ICC/IF	<a href="#">ab35192</a>
	Biotin Anti-Staphylococcus aureus antibody	ICC/IF, IHC-Fr	<a href="#">ab68954</a>
	FITC Anti-Staphylococcus aureus antibody	ICC/IF, IHC-Fr	<a href="#">ab68950</a>
	HRP Anti-Staphylococcus aureus antibody	ELISA, IHC-Fr	<a href="#">ab68952</a>
<b>30 kDa neutral phosphatase</b>	Recombinant Staphylococcus aureus 30 kDa neutral phosphatase protein (His tag)	SDS-PAGE	<a href="#">ab224833</a>
<b>alpha-hemolysin</b>	Anti-alpha-hemolysin antibody [8B7] - N-terminal	Neut, WB	<a href="#">ab190467</a>
<b>entB</b>	Anti-entB antibody	ELISA, WB	<a href="#">ab15898</a>
	Anti-entB antibody	ELISA	<a href="#">ab252729</a>
	Anti-entB antibody [3D10]	Neut, sELISA, WB	<a href="#">ab190465</a>
	Biotin Anti-entB antibody	ELISA, WB	<a href="#">ab15911</a>
	HRP Anti-entB antibody	ELISA, WB	<a href="#">ab15905</a>
<b>Exfoliative Toxin A/ETA</b>	Recombinant Staphylococcus aureus Exfoliative Toxin A/ETA protein (His tag)	MS, SDS-PAGE	<a href="#">ab236933</a>
<b>Glutamyl endopeptidase</b>	Recombinant staphylococcus aureus Glutamyl endopeptidase protein	FuncS, HPLC, SDS-PAGE	<a href="#">ab98127</a>
	Recombinant Staphylococcus aureus Glutamyl endopeptidase protein	SDS-PAGE	<a href="#">ab222175</a>
<b>hlgC</b>	Recombinant staphylococcus aureus hlgC protein (Active)	FuncS, SDS-PAGE, WB	<a href="#">ab233606</a>
<b>Leukocidin-F subunit (lukF)</b>	Recombinant Staphylococcus aureus Leukocidin-F subunit (lukF) protein (Tagged)	SDS-PAGE	<a href="#">ab236172</a>
<b>LukD</b>	Recombinant LukD protein	ELISA, FuncS, SDS-PAGE, WB	<a href="#">ab190423</a>

## Staphylococcus aureus (continued)

Target	Product	Application	Cat. No.
<b>Phospholipase C (hlb)</b>	Recombinant Staphylococcus aureus Phospholipase C (hlb) protein (His tag)	SDS-PAGE	<a href="#">ab241438</a>
<b>SED</b>	Anti-SED antibody	ELISA, WB	<a href="#">ab15900</a>
<b>Staphylococcus alpha Hemolysin</b>	Recombinant Staphylococcus alpha Hemolysin protein (Active)	ELISA, FuncS, SDS-PAGE, WB	<a href="#">ab233724</a>
<b>Staphylococcus aureus Enterotoxin D</b>	Anti-Staphylococcus aureus Enterotoxin D antibody	ELISA	<a href="#">ab252731</a>
<b>Staphylococcus Enterotoxin A</b>	Anti-Staphylococcus Enterotoxin A antibody	ELISA, WB	<a href="#">ab15897</a>
	Anti-Staphylococcus Enterotoxin A antibody [SA01]	ELISA, WB	<a href="#">ab243103</a>
<b>Staphylococcus Enterotoxin E</b>	Anti-Staphylococcus Enterotoxin E antibody	ELISA	<a href="#">ab252732</a>
	Recombinant Staphylococcus Enterotoxin E protein (Tagged)	SDS-PAGE	<a href="#">ab235850</a>
<b>Staphylococcus Enterotoxin H</b>	Anti-Staphylococcus Enterotoxin H antibody	ELISA	<a href="#">ab252733</a>
	HRP Anti-Staphylococcus Enterotoxin H antibody	ELISA, WB	<a href="#">ab15909</a>
	Recombinant Staphylococcus aureus Staphylococcus Enterotoxin H protein (His tag)	MS, SDS-PAGE	<a href="#">ab241533</a>
<b>Staphylococcus TSST1</b>	Anti-Staphylococcus TSST1 antibody	ELISA, WB	<a href="#">ab15933</a>
	HRP Anti-Staphylococcus TSST1 antibody	ELISA, WB	<a href="#">ab15934</a>

## Staphylococcus aureus subsp. aureus COL

Product	Application	Cat. No.
Anti-CHIPS antibody [JNC1]	Flow Cyt, IHC-Fr, IHC-P, WB	<a href="#">ab37241</a>
Recombinant Staphylococcus aureus CHIPS protein (His tag)	MS, SDS-PAGE	<a href="#">ab226270</a>

## Staphylococcus aureus subsp. aureus MSSA476

Product	Application	Cat. No.
Recombinant Staphylococcus aureus Clumping factor A protein (His tag)	SDS-PAGE	<a href="#">ab225978</a>

## Staphylococcus aureus subsp. aureus Mu50

Product	Application	Cat. No.
Recombinant Staphylococcus aureus Acyl carrier protein (Tagged)	SDS-PAGE	<a href="#">ab235813</a>
Anti-ALD1 antibody	WB	<a href="#">ab229984</a>
Anti-Enolase antibody	WB	<a href="#">ab229919</a>
Anti-Staphylococcus Enterotoxin C antibody	ELISA	<a href="#">ab252730</a>
Recombinant Staphylococcus aureus Staphylococcus Enterotoxin G protein (His tag)	SDS-PAGE	<a href="#">ab225609</a>

## Staphylococcus aureus subsp. aureus N315

Product	Application	Cat. No.
Anti-hlgB antibody	WB	<a href="#">ab190338</a>
Recombinant staphylococcus aureus hlgB protein (Active)	FuncS, SDS-PAGE, WB	<a href="#">ab233597</a>
Recombinant Staphylococcus aureus hlgB protein (His tag)	MS, SDS-PAGE	<a href="#">ab225605</a>
Recombinant Staphylococcus aureus HlgC protein (His tag)	SDS-PAGE	<a href="#">ab241242</a>



# Streptococcus

## Streptococcus agalactiae

Product	Application	Cat. No.
Recombinant Toxin zeta protein (His tag)	SDS-PAGE	<a href="#">ab238386</a>

## Streptococcus dysgalactiae subsp. Equisimilis

Product	Application	Cat. No.
Anti-Streptolysin O (Hemolytic streptococcus) antibody	IP, Neut, WB	<a href="#">ab188539</a>

## Streptococcus pneumoniae R6

Product	Application	Cat. No.
Recombinant Human Penicillin Binding Protein 2X	SDS-PAGE	<a href="#">ab168007</a>

## Streptococcus pneumoniae TIGR4

Product	Application	Cat. No.
Anti-Pneumolysin antibody	WB	<a href="#">ab71811</a>
Anti-Pneumolysin antibody [PLY-4]	WB	<a href="#">ab71810</a>
Recombinant Pneumolysin protein (His tag)	SDS-PAGE	<a href="#">ab236193</a>
Recombinant Pneumolysin protein (His tag)	SDS-PAGE	<a href="#">ab240861</a>

## Streptococcus pyogenes

Product	Application	Cat. No.
Anti-Streptococcal Pyrogenic Exotoxin B antibody	WB	<a href="#">ab225941</a>
Anti-Streptococcal Pyrogenic Exotoxin B antibody	WB	<a href="#">ab234682</a>
Recombinant S. pyogenes Streptococcal Pyrogenic Exotoxin B protein (His tag)	SDS-PAGE	<a href="#">ab224856</a>

## Streptococcus pyogenes (continued)

Product	Application	Cat. No.
Anti-Streptokinase antibody	ELISA	<a href="#">ab35168</a>
Anti-Streptokinase antibody	ELISA, FuncS, WB	<a href="#">ab53586</a>
Recombinant Streptokinase protein	FuncS, HPLC, SDS-PAGE	<a href="#">ab201364</a>
Streptokinase Activity Assay Kit (Colorimetric)	Other	<a href="#">ab273313</a>

## Streptococcus pyogenes MGAS6180

Product	Application	Cat. No.
Anti-Streptococcal Pyrogenic Exotoxin B antibody	WB	<a href="#">ab225941</a>
Anti-Streptococcal Pyrogenic Exotoxin B antibody	WB	<a href="#">ab234682</a>
Recombinant S. pyogenes Streptococcal Pyrogenic Exotoxin B protein (His tag)	SDS-PAGE	<a href="#">ab224856</a>

## Streptococcus pyogenes MGAS8232

Product	Application	Cat. No.
Anti-Streptococcal Pyrogenic Exotoxin A antibody	I-ELISA	<a href="#">ab53402</a>
Anti-Streptolysin antibody [6D11]	ELISA	<a href="#">ab23501</a>

## Streptococcus pyogenes serotype M1

Product	Application	Cat. No.
Anti-CRISPR-Cas9 antibody	Flow Cyt, ICC/IF, IP, WB	<a href="#">ab204448</a>
Anti-CRISPR-Cas9 antibody [7A9-3A3]	ICC/IF, WB	<a href="#">ab191468</a>
Anti-CRISPR-Cas9 antibody [8C1-F10]	ICC/IF, WB	<a href="#">ab210571</a>
Anti-CRISPR-Cas9 antibody [EPR18991]	Flow Cyt, ICC, ICC/IF, IHC-P, WB	<a href="#">ab189380</a>
Anti-CRISPR-Cas9 antibody [EPR18991] - BSA and Azide free	Flow Cyt, ICC, ICC/IF, IHC-P, WB	<a href="#">ab232379</a>
Anti-CRISPR-Cas9 antibody [EPR19619-92]	IHC-P, WB	<a href="#">ab210752</a>

## Streptococcus pyogenes serotype M1 (continued)

Product	Application	Cat. No.
Anti-CRISPR-Cas9 antibody [EPR19619-92] - BSA and Azide free	IHC-P, WB	<a href="#">ab223548</a>
Anti-CRISPR-Cas9 antibody [KANI345B]	ICC, IHC-P, WB	<a href="#">ab271293</a>
Anti-CRISPR-Cas9 antibody [KANI345B] - BSA and Azide free	ICC, IHC-P, WB	<a href="#">ab271303</a>
Alexa Fluor® 488 Anti-CRISPR-Cas9 antibody [EPR18991]	ICC/IF	<a href="#">ab215239</a>
Alexa Fluor® 647 Anti-CRISPR-Cas9 antibody [EPR18991]	ICC/IF	<a href="#">ab215240</a>
HRP Anti-CRISPR-Cas9 antibody [EPR18991]	WB	<a href="#">ab215345</a>
HRP Anti-CRISPR-Cas9 antibody [7A9-3A3]	WB	<a href="#">ab202580</a>
Recombinant S. pyogenes CRISPR-Cas9 protein	FuncS, SDS-PAGE	<a href="#">ab204220</a>

## Streptococcus thermophilus

Product	Application	Cat. No.
Anti-CRISPR-Cas9 antibody [EPR19619-18]	IHC-P, IP, WB	<a href="#">ab202637</a>
Anti-CRISPR-Cas9 antibody [EPR19619-18] - BSA and Azide free	IHC-P, IP, WB	<a href="#">ab251382</a>
Anti-CRISPR-Cas9 antibody [EPR19619-92]	IHC-P, WB	<a href="#">ab210752</a>
Anti-CRISPR-Cas9 antibody [EPR19619-92] - BSA and Azide free	IHC-P, WB	<a href="#">ab223548</a>
Anti-CRISPR-Cas9 antibody [EPR19633]	Flow Cyt, ICC/IF, IP, WB	<a href="#">ab202657</a>
Anti-CRISPR-Cas9 antibody [EPR19633] - BSA and Azide free	Flow Cyt, ICC/IF, IP, WB	<a href="#">ab251383</a>

# Other bacteria

Organism	Product	Application	Cat. No.
<b>Acinetobacter sp. ADP1</b>	Recombinant Catechol 1,2-dioxygenase protein (His tag)	SDS-PAGE	<a href="#">ab225612</a>
<b>Agrobacterium sp. CP4</b>	Recombinant 3-phosphoshikimate 1-carboxyvinyltransferase protein (His tag)	SDS-PAGE	<a href="#">ab225964</a>
<b>Azotobacter vinelandii</b>	Recombinant algL protein (His tag)	MS, SDS-PAGE	<a href="#">ab225669</a>
<b>Campylobacter jejuni</b>	Anti-Campylobacter jejuni antibody [57-24]	ELISA	<a href="#">ab8063</a>
	Anti-Campylobacter jejuni antibody [BGN/2E10]	ELISA, ICC/IF, IHC-Fr	<a href="#">ab54125</a>
	Biotin Anti-Campylobacter jejuni antibody	ELISA, ICC/IF, IHC-Fr, WB	<a href="#">ab53909</a>
<b>Campylobacter jejuni subsp. jejuni NCTC 11168 = ATCC 700819</b>	Anti-Major outer membrane protein antibody [cj-01]	WB	<a href="#">ab243190</a>
<b>Citrobacter freundii</b>	Recombinant Dihydroxyacetone kinase protein (His tag)	SDS-PAGE	<a href="#">ab225545</a>
<b>Enterococcus faecalis V583</b>	Anti-GelE antibody	WB	<a href="#">ab229880</a>
<b>Helicobacter pylori 26695</b>	Recombinant Helicobacter pylori CagA protein (His tag)	MS, SDS-PAGE	<a href="#">ab224836</a>
	Anti-ureB antibody	IHC-P, WB	<a href="#">ab127916</a>
	HRP Anti-vacA antibody	ELISA	<a href="#">ab193291</a>
	FITC Anti-vacA antibody	ELISA	<a href="#">ab193296</a>
	Recombinant vacA protein (His tag)	MS, SDS-PAGE	<a href="#">ab225655</a>
<b>Lysobacter enzymogenes</b>	Anti-Beta-lytic metalloendopeptidase antibody	WB	<a href="#">ab225678</a>
	Recombinant Lysyl endopeptidase protein (His tag)	SDS-PAGE	<a href="#">ab241229</a>
<b>Methanothermobacter marburgensis str. Marburg</b>	Recombinant fno protein (His tag)	SDS-PAGE	<a href="#">ab267939</a>
<b>Neisseria meningitidis H44/76</b>	Recombinant P.IB (porB) protein (His tag)	SDS-PAGE	<a href="#">ab225650</a>
<b>Neisseria meningitidis Z2491</b>	Anti-CRISPR-Cas9 antibody [EPR19620]	Flow Cyt, ICC/IF, IHC-P, WB	<a href="#">ab202638</a>

# Other bacteria (continued)

Organism	Product	Application	Cat. No.
<b>Neisseria meningitidis Z2491</b> (continued)	Anti-CRISPR-Cas9 antibody [EPR19620] - BSA and Azide free	Flow Cyt, ICC/IF, IHC-P, WB	<a href="#">ab232503</a>
	Alexa Fluor® 488 Anti-CRISPR-Cas9 antibody [EPR19620]	ICC/IF	<a href="#">ab215245</a>
<b>Pseudomonas aeruginosa PAO1</b>	Anti-ompF antibody	IHC-P, WB	<a href="#">ab203223</a>
	Recombinant Pseudomonas aeruginosa ompF protein (His tag)	SDS-PAGE	<a href="#">ab236164</a>
	Recombinant Pseudomonas aeruginosa plcH protein (Tagged)	SDS-PAGE	<a href="#">ab236925</a>
	Recombinant Pseudomonas aeruginosa Regulatory protein RhIR (His tag)	MS, SDS-PAGE	<a href="#">ab225569</a>
<b>Pseudomonas putida</b>	Recombinant fdhA protein	FuncS, SDS-PAGE	<a href="#">ab198463</a>
<b>Pyrococcus furiosus DSM 3638</b>	Anti-DNA/RNA-binding protein Alba antibody	WB	<a href="#">ab234637</a>
<b>Wolbachia pipientis</b>	Anti-Cell Division Protein FtsZ antibody	WB	<a href="#">ab225991</a>
<b>Yersinia enterocolifica</b>	Recombinant Attachment invasion locus protein (His tag)	SDS-PAGE	<a href="#">ab224857</a>
	Recombinant Invasin protein (His tag)	SDS-PAGE	<a href="#">ab224847</a>
<b>Yersinia pestis</b>	Recombinant Yersinia pestis F1 antigen protein (His tag)	SDS-PAGE	<a href="#">ab236940</a>
	Recombinant Yersinia pestis F1 antigen protein (His tag)	MS, SDS-PAGE	<a href="#">ab241388</a>

# Enterobacteria phage

## Enterobacteria phage H-19B

Product	Application	Cat. No.
Anti-Verotoxin I / SLT 1a antibody [VERO-01]	WB	<a href="#">ab243100</a>

## Enterobacteria phage lambda

Product	Application	Cat. No.
Recombinant Serine/threonine-protein phosphatase	FuncS, SDS-PAGE	<a href="#">ab188459</a>

## Enterobacteria phage M13

Product	Application	Cat. No.
Anti-M13 antibody [E1]	ELISA, WB	<a href="#">ab24229</a>
HRP Anti-M13 antibody [B62-FE2]	ELISA	<a href="#">ab50370</a>
Anti-M13 Bacteriophage Coat Protein g8p antibody [RL-ph2]	Flow Cyt, ICC, WB	<a href="#">ab9225</a>
Anti-M13 + Fd Bacteriophage Coat Proteins antibody	ELISA, I-ELISA	<a href="#">ab6188</a>

## Enterobacteria phage P1

Product	Application	Cat. No.
Anti-Cre recombinase antibody	ICC/IF, WB	<a href="#">ab190177</a>
Anti-Cre recombinase antibody	Flow Cyt, ICC/IF, WB	<a href="#">ab216262</a>
Anti-Cre recombinase antibody [7.23]	WB	<a href="#">ab24607</a>
Anti-Cre recombinase antibody [DF6]	WB	<a href="#">ab101071</a>
Anti-Cre recombinase antibody [EPR13835] - BSA and Azide free	WB	<a href="#">ab240304</a>
Recombinant Bacteriophage P1 Cre recombinase protein	FuncS, SDS-PAGE	<a href="#">ab134845</a>

## Enterobacteria phage T4

Product	Application	Cat. No.
Recombinant DNA beta-glucosyltransferase protein	SDS-PAGE	<a href="#">ab198660</a>
Recombinant UVSX protein (Tagged)	MS, SDS-PAGE	<a href="#">ab237746</a>
Recombinant uvsY protein (His tag)	MS, SDS-PAGE	<a href="#">ab225610</a>

## Enterobacteria phage T7

Product	Application	Cat. No.
Anti-T7 tag® antibody	ELISA, ICC/IF, WB	<a href="#">ab9115</a>
Anti-T7 tag® antibody	ChIP, ELISA, ICC, IP, WB	<a href="#">ab9138</a>
Anti-T7 tag® antibody	ELISA, ICC, IHC-P, WB	<a href="#">ab97964</a>
Anti-T7 tag® antibody	WB	<a href="#">ab183658</a>
Agarose Anti-T7 tag® antibody	IP	<a href="#">ab1230</a>
Agarose Anti-T7 tag® antibody	IP	<a href="#">ab90665</a>
Alkaline Phosphatase Anti-T7 tag® antibody	ELISA, WB	<a href="#">ab133151</a>
Biotin Anti-T7 tag® antibody	WB	<a href="#">ab81661</a>
DyLight® 488 Anti-T7 tag® antibody	ICC/IF	<a href="#">ab117486</a>
DyLight® 550 Anti-T7 tag® antibody	Flow Cyt, ICC/IF	<a href="#">ab117595</a>
DyLight® 650 Anti-T7 tag® antibody	ICC/IF	<a href="#">ab119353</a>
HRP Anti-T7 tag® antibody	ELISA, ICC	<a href="#">ab19291</a>
HRP Anti-T7 tag® antibody	ELISA, ICC, WB	<a href="#">ab21477</a>
PE Anti-T7 tag® antibody	Flow Cyt	<a href="#">ab72563</a>
PerCP Anti-T7 tag® antibody	Flow Cyt	<a href="#">ab117494</a>
SureLight® APC Anti-T7 tag® antibody	Flow Cyt	<a href="#">ab72565</a>



# Clostridium botulinum D phage

Product	Application	Cat. No.
Native Clostridium botulinum Exoenzyme C3 protein	SDS-PAGE	<a href="#">ab63835</a>



# Corynephage beta

Product	Application	Cat. No.
Anti-Diphtheria Toxin antibody	Dot, ELISA, IP, WB	<a href="#">ab151222</a>
Anti-Diphtheria Toxin antibody	ELISA, WB	<a href="#">ab53828</a>
Anti-Diphtheria Toxin antibody	ELISA	<a href="#">ab19950</a>
Anti-Diphtheria Toxin antibody [11D9]	ELISA, WB	<a href="#">ab53827</a>
Anti-Diphtheria Toxin antibody [11D9]	ELISA, WB	<a href="#">ab51882</a>
Anti-Diphtheria Toxin antibody [IGX3492]	WB	<a href="#">ab209329</a>
Anti-Diphtheria Toxin antibody [IGX3492R-3]	WB	<a href="#">ab219834</a>
Biotin Anti-Diphtheria Toxin antibody	ELISA	<a href="#">ab20900</a>
FITC Anti-Diphtheria Toxin antibody	ICC/IF, IHC-Fr	<a href="#">ab68422</a>
HRP Anti-Diphtheria Toxin antibody	ELISA, WB	<a href="#">ab34420</a>
Native Diphtheria Toxin (mutated G52E) protein	ELISA, FuncS, SDS-PAGE, WB	<a href="#">ab188505</a>



# Saccharomyces cerevisiae

Target	Product	Application	Cat. No.
<b>2-deoxyglucose-6-phosphate phosphatase 1</b>	Recombinant <i>S. cerevisiae</i> 2-deoxyglucose-6-phosphate phosphatase 1 protein (His tag)	MS, SDS-PAGE	<a href="#">ab241228</a>
<b>ADA2</b>	Anti-ADA2 antibody	WB	<a href="#">ab215524</a>
<b>alpha Tubulin</b>	Anti-alpha Tubulin antibody [EPR13799]	WB	<a href="#">ab184970</a>
	Anti-alpha Tubulin antibody [EPR13799] - BSA and Azide free	WB	<a href="#">ab232651</a>
<b>Arp5</b>	Anti-Arp5 antibody	WB	<a href="#">ab12099</a>
<b>ARX1</b>	Anti-ARX1 antibody	ICC, WB	<a href="#">ab74135</a>
<b>ATG8</b>	Anti-ATG8 antibody	ELISA, WB	<a href="#">ab4753</a>
<b>Carboxypeptidase Y</b>	Anti-Carboxypeptidase Y antibody [10A5B5]	WB	<a href="#">ab113685</a>
	Anti-Carboxypeptidase Y antibody	WB	<a href="#">ab181691</a>
<b>Cdc13</b>	Anti-Cdc13 antibody [6F11/2]	IP, WB	<a href="#">ab10873</a>
<b>Cdc37</b>	Anti-Cdc37 antibody	WB	<a href="#">ab188280</a>
<b>COX4, mitochondrial</b>	Anti-COX4, mitochondrial antibody [1A12A12]	WB	<a href="#">ab110272</a>
<b>Ctk1</b>	Anti-Ctk1 antibody	WB	<a href="#">ab47812</a>
<b>Dsk2</b>	Anti-Dsk2 antibody	WB	<a href="#">ab4119</a>
<b>FLK1</b>	Anti-FLK1 antibody [Clone 10]	WB	<a href="#">ab24313</a>
<b>FLP1</b>	Anti-FLP1 antibody - N-terminal	WB	<a href="#">ab231288</a>
<b>GAL4</b>	Anti-GAL4 antibody	ChIP, WB	<a href="#">ab1396</a>
	Anti-GAL4 antibody [14-7E10G10]	WB	<a href="#">ab135398</a>
	Anti-GAL4 antibody [15-6E10A7]	WB	<a href="#">ab135397</a>
	Recombinant <i>S. cerevisiae</i> GAL4 protein	FuncS, SDS-PAGE	<a href="#">ab81879</a>
<b>GCN5p</b>	Anti-GCN5p antibody	WB	<a href="#">ab63810</a>
<b>GLC8</b>	Recombinant <i>S. cerevisiae</i> GLC8 protein	SDS-PAGE	<a href="#">ab79249</a>
<b>HIR1</b>	Anti-HIR1 antibody	WB	<a href="#">ab46878</a>

# Saccharomyces cerevisiae (continued)

Target	Product	Application	Cat. No.
<b>HIR1 (continued)</b>	Anti-HIR1 antibody	WB	<a href="#">ab61635</a>
<b>HIR3</b>	Anti-HIR3 antibody	WB	<a href="#">ab61639</a>
<b>Histone H2A</b>	Anti-Histone H2A antibody [EPR18089] - ChIP Grade	ChIP, PepArr, WB	<a href="#">ab188312</a>
	Anti-Histone H2A (phospho S129) antibody	ELISA, PepArr, WB	<a href="#">ab15083</a>
	Anti-Histone H2A (phospho S129) antibody [EPR17588] - ChIP Grade	ChIP, Dot, ELISA, PepArr, WB	<a href="#">ab181447</a>
	Anti-Histone H2A (phospho S129) antibody [EPR17588] - BSA and Azide free	ChIP, Dot, ELISA, PepArr, WB	<a href="#">ab241390</a>
	Anti-Histone H2A antibody [EPR18089] - BSA and Azide free	ChIP, PepArr, WB	<a href="#">ab217841</a>
<b>Histone H2B</b>	Anti-Histone H2B antibody - ChIP Grade	ChIP, ICC/IF, IHC-P, IP, WB	<a href="#">ab1790</a>
	Anti-Histone H2B (yeast) antibody [EPR18094] - ChIP Grade	ChIP, PepArr, WB	<a href="#">ab188291</a>
	Anti-Histone H2B (yeast) antibody [EPR18094] - BSA and Azide free	ChIP, PepArr, WB	<a href="#">ab250944</a>
	Anti-Histone H2B (phospho T129) antibody [EPR18095] - ChIP Grade	ChIP, PepArr, WB	<a href="#">ab188292</a>
	Anti-Histone H2B (phospho T129) antibody [EPR18095] - BSA and Azide free	ChIP, PepArr, WB	<a href="#">ab250945</a>
<b>Histone H4</b>	Anti-Histone H4 (acetyl K12) antibody - ChIP Grade	ChIP, ICC/IF, WB	<a href="#">ab46983</a>
<b>Hsc82</b>	Anti-Hsc82 antibody	WB	<a href="#">ab30920</a>
<b>HSP82</b>	Recombinant <i>S. cerevisiae</i> HSP82 protein	WB	<a href="#">ab157058</a>
<b>Hsp90 co-chaperone AHA1</b>	Recombinant <i>S. cerevisiae</i> Hsp90 co-chaperone AHA1 protein (His tag)	SDS-PAGE	<a href="#">ab222785</a>
<b>Hsp104</b>	Anti-Hsp104 antibody	IHC-P, WB	<a href="#">ab2924</a>
	Anti-Hsp104 antibody	IP, WB	<a href="#">ab69549</a>
	Recombinant <i>S. cerevisiae</i> Hsp104 protein	SDS-PAGE	<a href="#">ab48738</a>

# Saccharomyces cerevisiae (continued)

Target	Product	Application	Cat. No.
<b>Hub1</b>	Anti-Hub1 antibody	WB	<a href="#">ab4754</a>
<b>Intron-encoded endonuclease I-SceI</b>	Anti-Intron-encoded endonuclease I-SceI antibody	ICC/IF, WB	<a href="#">ab216263</a>
<b>KEX2 protease</b>	Anti-KEX2 protease antibody [3B5]	WB	<a href="#">ab34772</a>
	Recombinant <i>S. cerevisiae</i> KEX2 protease protein	FuncS, HPLC, SDS-PAGE	<a href="#">ab204623</a>
	Recombinant <i>S. cerevisiae</i> KEX2 protease protein (Active)	FuncS, HPLC, SDS-PAGE	<a href="#">ab96554</a>
<b>MED11</b>	Anti-MED11 antibody	WB	<a href="#">ab221200</a>
<b>MSH2</b>	Anti-MSH2 antibody	WB	<a href="#">ab229208</a>
	Anti-MSH2 antibody - C-terminal	WB	<a href="#">ab229483</a>
<b>MultiDsk (array of 5 UBA domains)</b>	Recombinant <i>S. cerevisiae</i> MultiDsk (array of 5 UBA domains) protein	IP	<a href="#">ab179563</a>
<b>NAS6</b>	Anti-NAS6 antibody	IP, WB	<a href="#">ab91447</a>
<b>Nicotinamidase</b>	Recombinant <i>S. cerevisiae</i> Nicotinamidase protein	SDS-PAGE	<a href="#">ab225563</a>
<b>NSP1</b>	Anti-NSP1 antibody [32D6]	ICC/IF, WB	<a href="#">ab4641</a>
<b>Nsr1p</b>	Anti-Nsr1p antibody [31C4]	ICC/IF, WB	<a href="#">ab4642</a>
<b>NUP84</b>	Anti-NUP84 antibody	WB	<a href="#">ab122883</a>
<b>PCNA</b>	Anti-PCNA antibody	WB	<a href="#">ab221196</a>
<b>PDI1</b>	Anti-PDI1 antibody [38H8]	ICC/IF, WB	<a href="#">ab4644</a>
<b>PEP1</b>	Anti-PEP1 antibody [18C8BC7AD10]	WB	<a href="#">ab113690</a>
<b>PEP12</b>	Anti-PEP12 antibody [2C3G4]	ICC/IF, WB	<a href="#">ab113689</a>
<b>PHO8</b>	Anti-PHO8 antibody [1D3A10]	ICC/IF, WB	<a href="#">ab113688</a>
<b>RAD3</b>	Anti-RAD3 antibody	WB	<a href="#">ab127891</a>
<b>RAD4</b>	Anti-RAD4 antibody	WB	<a href="#">ab79775</a>

# Saccharomyces cerevisiae (continued)

Target	Product	Application	Cat. No.
<b>Rad14</b>	Anti-Rad14 antibody	WB	<a href="#">ab43577</a>
<b>Rad53</b>	Anti-Rad53 antibody	WB	<a href="#">ab104232</a>
	Anti-Rad53 antibody [EL7.E1]	WB	<a href="#">ab166859</a>
<b>Rfa1/Rpa1</b>	Anti-Rfa1/Rpa1 antibody	WB	<a href="#">ab221198</a>
<b>RMS1</b>	Anti-RMS1 antibody [EPR20103]	WB	<a href="#">ab202438</a>
	Anti-RMS1 antibody [EPR20103] - BSA and Azide free	WB	<a href="#">ab251372</a>
<b>RNA polymerase II CTD repeat YSPTSPS</b>	Anti-RNA polymerase II CTD repeat YSPTSPS (phospho S2) antibody	ELISA, ICC, IHC-P, WB	<a href="#">ab5095</a>
<b>RNQ1</b>	Anti-RNQ1 antibody - C-terminal	WB	<a href="#">ab188279</a>
<b>RPB3</b>	Anti-RPB3 antibody [1Y26]	WB	<a href="#">ab202893</a>
<b>Rpn5</b>	Anti-Rpn5 antibody	WB	<a href="#">ab79773</a>
<b>Rpt5/TBP-1</b>	Anti-Rpt5/TBP-1 antibody	WB	<a href="#">ab22676</a>
<b>RTT106</b>	Anti-RTT106 antibody	WB	<a href="#">ab130122</a>
<b>SET3</b>	Anti-SET3 antibody [EPR20101]	WB	<a href="#">ab202434</a>
	Anti-SET3 antibody [EPR20101] - BSA and Azide free	WB	<a href="#">ab251370</a>
<b>SET5</b>	Anti-SET5 antibody [EPR20102]	WB	<a href="#">ab202437</a>
	Anti-SET5 antibody [EPR20102] - BSA and Azide free	WB	<a href="#">ab251371</a>
<b>Sld2</b>	Anti-Sld2 antibody	WB	<a href="#">ab139172</a>
<b>Smt3</b>	Anti-Smt3 antibody	ELISA, WB	<a href="#">ab14405</a>
	Recombinant <i>S. cerevisiae</i> Smt3 protein (His tag)	SDS-PAGE	<a href="#">ab225640</a>
	Recombinant <i>S. cerevisiae</i> Smt3 protein (His tag)	SDS-PAGE	<a href="#">ab241534</a>
<b>Sua7p</b>	Anti-Sua7p antibody	ELISA, WB	<a href="#">ab63909</a>
<b>TEM1</b>	Anti-TEM1 antibody	WB	<a href="#">ab188274</a>

# Saccharomyces cerevisiae (continued)

Target	Product	Application	Cat. No.
<b>Toa1</b>	Anti-Toa1 antibody	WB	<a href="#">ab64274</a>
<b>TUB3</b>	Anti-TUB3 antibody [EPR13800]	WB	<a href="#">ab184971</a>
	Anti-TUB3 antibody [EPR13800] - BSA and Azide free	WB	<a href="#">ab250803</a>
<b>Tubulin</b>	Anti-Tubulin antibody [EPR13796] - Loading Control	WB	<a href="#">ab210797</a>
	Anti-Tubulin antibody [EPR13796] - BSA and Azide free	WB	<a href="#">ab251523</a>
	Anti-Tubulin antibody [EPR13797] - Loading Control	WB	<a href="#">ab185224</a>
	Anti-Tubulin antibody [EPR13797] - BSA and Azide free	WB	<a href="#">ab250822</a>
	Anti-Tubulin antibody [EPR13798] - Loading Control	WB	<a href="#">ab184966</a>
	Anti-Tubulin antibody [EPR13798] - BSA and Azide free	WB	<a href="#">ab250800</a>
	Anti-Tubulin antibody [YL1/2] - Loading Control	Flow Cyt, ICC/IF, IHC-P, WB	<a href="#">ab6160</a>
	Anti-Tubulin antibody [YL1/2] - BSA and Azide free	ELISA, Flow Cyt, ICC/IF, IHC (Methanol fixed), IHC (PFA fixed), IHC-Fr, IHC-P, IP, RIA, WB	<a href="#">ab264519</a>
	HRP Anti-Tubulin antibody [YL1/2] - Loading Control	IHC-P, WB	<a href="#">ab197740</a>
	Anti-Tubulin antibody [YOL1/34] - Microtubule Marker	Flow Cyt, ICC, WB	<a href="#">ab6161</a>
	Anti-Tubulin antibody [YOL1/34] - BSA and Azide free	ELISA, Flow Cyt, ICC, RIA, WB	<a href="#">ab264065</a>
	HRP Anti-Tubulin antibody [YOL1/34] - Microtubule Marker	IHC-P, WB	<a href="#">ab196583</a>
	Alexa Fluor® 488 Anti-Tubulin antibody [YL1/2]	ICC/IF	<a href="#">ab197737</a>

# Saccharomyces cerevisiae (continued)

Target	Product	Application	Cat. No.
<b>Tubulin (continued)</b>	Alexa Fluor® 488 Anti-Tubulin antibody [YOL1/34] - Microtubule Marker	ICC/IF	<a href="#">ab195883</a>
	Alexa Fluor® 647 Anti-Tubulin antibody [YOL1/34] - Microtubule Marker	ICC/IF	<a href="#">ab195884</a>
<b>VMA2</b>	Anti-VMA2 antibody [13D11B2]	ICC/IF, WB	<a href="#">ab113684</a>
<b>VPH1</b>	Anti-VPH1 antibody [10D7A7B2]	ICC/IF, WB	<a href="#">ab113683</a>

# Schizosaccharomyces pombe

Target	Product	Application	Cat. No.
<b>Chp1</b>	Anti-Chp1 antibody	ChIP, WB	<a href="#">ab18191</a>
<b>cnd2</b>	Anti-cnd2 antibody	ICC/IF, WB	<a href="#">ab188277</a>
<b>dis2</b>	Anti-dis2 antibody	IP, WB	<a href="#">ab122909</a>
<b>DIS3</b>	Anti-DIS3 antibody	ICC/IF, WB	<a href="#">ab64289</a>
<b>Glucan endo-1,3-alpha-glucosidase agn1</b>	Recombinant S. pombe Glucan endo-1,3-alpha-glucosidase agn1 protein (Tagged)	SDS-PAGE	<a href="#">ab238379</a>
<b>Histone H2A</b>	Anti-Histone H2A (phospho S129) antibody	ELISA, PepArr, WB	<a href="#">ab15083</a>
	Anti-Histone H2A (phospho S129) antibody	WB	<a href="#">ab17353</a>
<b>Histone H2B</b>	Anti-Histone H2B (yeast) antibody	WB	<a href="#">ab188271</a>
<b>mrc1</b>	Anti-mrc1 antibody - N-terminal	IP, WB	<a href="#">ab188269</a>
<b>PP2A-2 catalytic subunit</b>	Anti-PP2A-2 catalytic subunit antibody - C-terminal	ICC/IF, IP, WB	<a href="#">ab188253</a>
<b>Rad21</b>	Anti-Rad21 antibody	WB	<a href="#">ab171462</a>
<b>Rad22</b>	Anti-Rad22 antibody	ELISA, ICC/IF, IP, WB	<a href="#">ab63800</a>
<b>Rhp51</b>	Anti-Rhp51 antibody	ICC/IF, IP, WB	<a href="#">ab63799</a>
<b>Rpt1</b>	Anti-Rpt1 antibody	WB	<a href="#">ab22678</a>
<b>Swi6</b>	Anti-Swi6 antibody	ChIP, IP, WB	<a href="#">ab188276</a>
<b>Wee1</b>	Anti-Wee1 antibody [EPR20899]	WB	<a href="#">ab233540</a>
	Anti-Wee1 antibody [EPR20899] - BSA and Azide free	WB	<a href="#">ab245987</a>



Protozoa

# Cryptosporidium parvum

Product	Application	Cat. No.
Anti-Cryptosporidium parvum antibody	ELISA, ICC/IF	<a href="#">ab20787</a>



Protozoa

# Giardia lamblia

Product	Application	Cat. No.
Anti-Giardia lamblia antibody	ELISA, ICC/IF	<a href="#">ab28344</a>
FITC Anti-Giardia lamblia antibody	ICC/IF, IHC-Fr	<a href="#">ab68458</a>



Protozoa

# Malaria

Product	Application	Cat. No.
Anti-Malaria ELISA Kit	ELISA	<a href="#">ab178649</a>



Protozoa

# Plasmodium aldolase

Product	Application	Cat. No.
Anti-Plasmodium aldolase antibody	ELISA, WB	<a href="#">ab207494</a>
HRP Anti-Plasmodium aldolase antibody	ELISA, WB	<a href="#">ab38905</a>



# Pneumocystis carinii

Product	Cat. No.
Pneumocystis Stain Kit (Microorganism Stain)	<a href="#">ab150682</a>

# Toxoplasma gondii

Product	Application	Cat. No.
Anti-Toxoplasma gondii antibody	ICC/IF	<a href="#">ab23507</a>
Anti-Toxoplasma gondii antibody	ELISA, ICC/IF	<a href="#">ab138698</a>
Biotin Anti-Toxoplasma gondii antibody	ELISA	<a href="#">ab69251</a>
Recombinant T. gondii Toxoplasma gondii protein	ELISA, Flow Cyt, WB	<a href="#">ab51321</a>
Recombinant Toxoplasma gondii GRA 1 protein	ELISA, WB	<a href="#">ab43137</a>
Avidity Toxoplasma gondii IgG ELISA kit	ELISA	<a href="#">ab247205</a>
Human Anti-Toxoplasma gondii IgG ELISA Kit	ELISA	<a href="#">ab108776</a>
Human Anti-Toxoplasma gondii IgM ELISA Kit	ELISA	<a href="#">ab108778</a>
Recombinant Toxoplasma gondii MIC 3 protein	ELISA, WB	<a href="#">ab43135</a>

# Aspergillus

Target	Product	Application	Cat. No.
<b>Aspergillus</b>	Anti-Aspergillus antibody	ELISA, IHC-Fr, IHC-P	<a href="#">ab20419</a>
	Anti-Aspergillus antibody	ELISA	<a href="#">ab34953</a>
<b>Aspergillus fumigatus IgG</b>	Aspergillus fumigatus IgG ELISA kit	ELISA	<a href="#">ab247190</a>
<b>Aspergillus fumigatus IgM</b>	Aspergillus fumigatus IgM ELISA kit	ELISA	<a href="#">ab247191</a>
<b>Aspergillopepsin 2</b>	Recombinant Aspergillopepsin 2 protein (His tag)	SDS-PAGE	<a href="#">ab225547</a>
<b>AMCase</b>	Anti-AMCase antibody	ICC/IF, IHC-P, WB	<a href="#">ab72309</a>
	Anti-AMCase antibody [EPR19984]	IHC-Fr, IHC-P, WB	<a href="#">ab207169</a>
	Anti-AMCase antibody [EPR19984] - BSA and Azide free	IHC-Fr, IHC-P, WB	<a href="#">ab251465</a>
	Anti-AMCase antibody [EPR19985]	IHC-Fr, IHC-P, WB	<a href="#">ab207168</a>
	Anti-AMCase antibody [EPR19985] - BSA and Azide free	IHC-Fr, IHC-P, WB	<a href="#">ab251464</a>
	Acidic Mammalian Chitinase Activity Kit (Fluorometric)		<a href="#">ab273291</a>
<b>BSD</b>	Anti-BSD antibody	ELISA, ICC/IF, WB	<a href="#">ab38307</a>

# Candida albicans

Target	Product	Application	Cat. No.
<b>Candida albicans</b>	Anti-Candida albicans antibody [B2134R]	ELISA	<a href="#">ab252746</a>
	Biotin Anti-Candida albicans antibody	CellAct, DID, ELISA, ICC/IF, IHC-P	<a href="#">ab20005</a>
	FITC Anti-Candida albicans antibody	CCle, DID, ELISA, ICC/IF	<a href="#">ab21164</a>
	HRP Anti-Candida albicans antibody	ELISA, ICC/IF	<a href="#">ab20028</a>
<b>Candida albicans IgA</b>	Human Anti-Candida albicans IgA ELISA Kit	ELISA	<a href="#">ab108714</a>
<b>Candida albicans IgG</b>	Human Anti-Candida albicans IgG ELISA Kit	ELISA	<a href="#">ab108715</a>
<b>Candida albicans IgM</b>	Human Anti-Candida albicans IgM ELISA Kit	ELISA	<a href="#">ab108716</a>
<b>Candidapepsin-9</b>	Anti-Candidapepsin-9 antibody	WB	<a href="#">ab234680</a>

 Nematode

# Ascaris lumbricoides

Product	Cat. No.
Human Anti-Ascaris lumbricoides IgG ELISA Kit	<a href="#">ab108707</a>

 Nematode

# Canine Heartworm

Product	Cat. No.
Anti-Canine Heartworm antibody	<a href="#">ab193773</a>

 Nematode

# Toxocara canis

Product	Cat. No.
Human Anti-Toxocara canis IgG ELISA Kit	<a href="#">ab108775</a>

 Nematode

# Trichinella spiralis

Product	Cat. No.
Human Anti-Trichinella spiralis IgG ELISA Kit	<a href="#">ab108780</a>