

If you have a FLIPR[®] – try our aequorin cell lines today!



Aequorin and Photina cell lines – the alternative calcium flux assay.

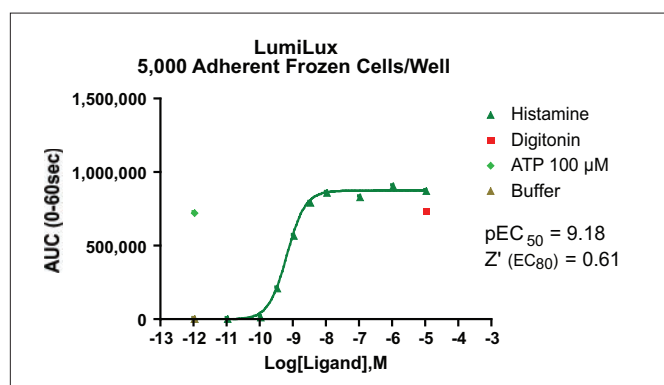
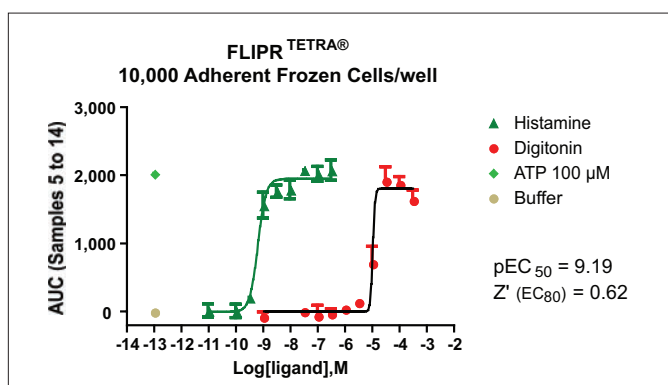
Luminescence Cell Lines Intense Enough for FLIPR^{TETRA}[®]

Simply turn off the excitation light on your FLIPR^{TETRA}[®] and easily generate high quality data with exceptional Z' values using these validated AequoScreen[®] (aequorin) or PhotoScreen[™] (Photina[®]) cell lines. Worried about the pharmacology? Equivalent luminescence vs. fluorescence data (data not shown) has been demonstrated as well as equivalent luminescence on FLIPR^{TETRA}[®] with aequorin option and LumiLux for select cell lines. And that's not all, with these cell lines there are no wash steps following substrate loading enabling faster results.

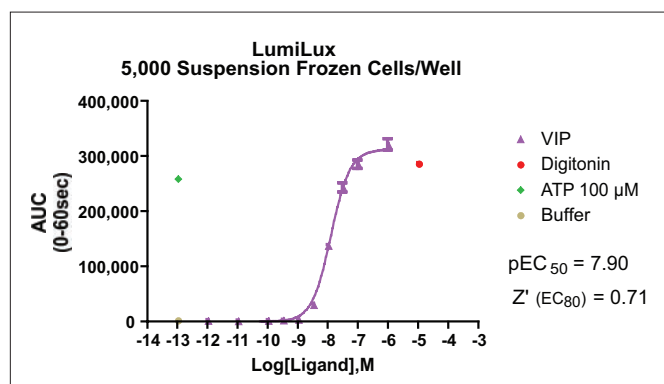
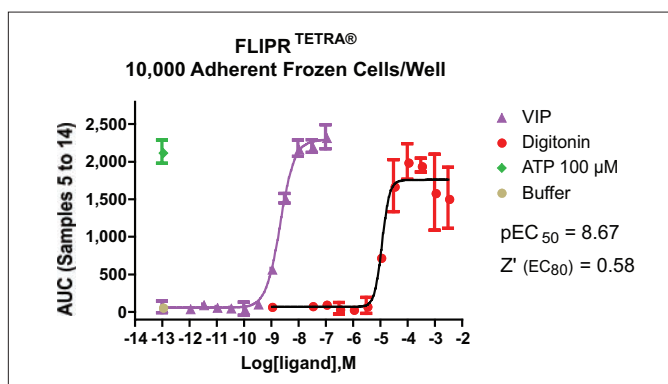
PDL-coated microplates improve your performance

Ideal for fluorescent and/or luminescent assays in any FLIPR[®] model, PerkinElmer ViewPlates and PDL-coated plates are available in 96-, 384- and 1536-well formats. You'll have confidence in your results with these high-quality microplates. FLIPR^{TETRA}[®] compatible cell lines expressing your GPCR of interest can also be generated using our AequoScreen parental cell lines or by transfecting our aequorin plasmids into your recombinant GPCR expressing cell line.

Pharmacology: Luminescence assay FLIPR vs. LumiLux



384-well Histamine H₁ (above) and Vasoactive Intestinal Peptide (VPAC₁) (below) AequoScreen receptor cells were analyzed on the FLIPR^{TETRA} and the LumiLux[®] in 384-well format using a flash luminescence aequorin assay. EC₅₀ values obtained on both readers and in both assay modes were equivalent.



AequoScreen Parental Cell Line and Plasmid Ordering Information:

Product Type	Host cell	Cat. No.
AequoScreen Parental cell line	CHO-K1	ES-000-A12
AequoScreen Ga ₁₆ Parental cell line	CHO-K1	ES-000-A24
AequoScreen Ga ₁₆ Parental cell line	1321N1	ES-000-A28
AequoScreen Parental cell line	HEK293	ES-000-A30
AequoScreen Ga ₁₆ Parental cell line	HEK293	ES-000-A26
AequoScreen Ga _{q15} Parental cell line	CHO-K1	ES-000-A21
AequoScreen Plasmid	NA	ES-002-AC
AequoScreen Plasmid with Ga ₁₆	NA	ES-003-AC

Validated on the FLIPR^{TETRA}

Receptor	Subtype	Host cell	Cat. No.
Adenosine	A3	CHO-K1	AX-001-PCF
Galanin	GAL2	CHO-K1	AX-008-PCF
Histamine	H ₁	CHO-K1	ES-390-A
Neuropeptide Y	NYP1	CHO-K1	ES-351-A
Purinergic	P2X1	CHO-K1	AX-009-PCF
Urotensin	Uro II	CHO-K1	AX-007-PCF
Vasoactive Intestinal Peptide	VPAC ₁	CHO-K1	ES-273-A
Vasopressin	V1b	CHO-K1	ES-362-A

The AequoScreen and PhotoScreen product portfolios can be divided into categories which will help you to decide if your target of interest is compatible with your FLIPR. Remember, cell lines can be tested prior to purchase.

FLIPR^{TETRA} compatible

Receptor	Subtype	Host cell	Cat. No.
5-Hydroxytryptamine	5-HT3A	HEK293	ES-402-A
Adrenergic	α1b	CHO-K1	ES-037-A
Adrenergic	β1	CHO-K1	ES-033-A
Anaphylatoxin	C5a	CHO-K1	ES-731-A
Angiotensin	AT1	CHO-K1	ES-072-A
Calcitonin	AM ₂	CHO-K1	ES-430-A
Chemokine	CCR9a	CHO-K1	ES-146-A
Citric Acid cycle	GPR99	CHO-K1	ES-743-A
Mas-Related	MrgX2	CHO-K1	ES-742-A
Neurotensin	NTS1	CHO-K1	ES-690-A
Peptide P518	QRFP (GPR103)	CHO-K1	ES-670-A
Neuropeptide FF	NPFF ₂₅	CHO-K1	ES-490-A
Protease Activated Receptors	PAR4	CHO-K1	ES-782-A
Vasopressin	V1a	CHO-K1	ES-361-A

May be FLIPR^{TETRA} compatible

Receptor	Subtype	Host cell	Cat. No.
Acetylcholine (Muscarinic)	M1	CHO-K1	ES-210-A
Acetylcholine (Muscarinic)	M2	CHO-K1	ES-211-A
Acetylcholine (Muscarinic)	M3	CHO-K1	ES-212-A
Adenosine	A _{2B}	HEK293	ES-013-A
Adrenergic	α1a	CHO-K1	ES-036-A
Adrenergic	α1d	CHO-K1	ES-038-A
Adrenergic	α2b	CHO-K1	ES-031-A
Anaphylatoxin	C3a	CHO-K1	ES-730-A
Bombesin	BB2	CHO-K1	ES-582-A
Cannabinoid	CB1	CHO-K1	ES-110-A
Chemokine	CCR6	CHO-K1	ES-139-A
Chemokine	CCR7	CHO-K1	ES-140-A
Chemokine	CCR10	CHO-K1	ES-143-A
Chemokine	CXCR2	CHO-K1	ES-145-A
Corticotropin	CFR1	CHO-K1	ES-152-A
Free Fatty Acids	GPR120	CHO-K1	ES-800-A
Lysophospholipid	S ₁ P ₂ (Edg5)	CHO-K1	ES-594-A
Lysophospholipid	S ₁ P ₄ (Edg6)	CHO-K1	ES-592-A
Lysophospholipid	S ₁ P ₅ (Edg8)	CHO-K1	ES-593-A
Mas-Related	MrgX1	CHO-K1	ES-740-A
Melatonin	MT1	CHO-K1	ES-620-A
Neuropeptide Y	NPY2	CHO-K1	ES-352-A
Opioid	OP2(κ)	CHO-K1	ES-541-A
Prokineticin	PKR2	CHO-K1	ES-751-A
Protease Activated Receptors	PAR2	CHO-K1	ES-780-A
Relaxin	RXFP4	CHO-K1	ES-659-A
Thyrotropin Releasing Hormone	TRH ₁	CHO-K1	ES-700-A
Urotensin	Uro II (rat)	CHO-K1	ES-441-A
Vasoactive Intestinal Peptide	PAC ₁	CHO-K1	ES-272-A
Vasoactive Intestinal Peptide	VPAC ₂	CHO-K1	ES-274-A

FLIPR^{TETRA} Plus compatible only

Receptor	Subtype	Host cell	Cat. No.
AequoScreen Parental cell line	NA	1321N1	ES-000-A27
5-Hydroxytryptamine	5-HT1a	CHO-K1	ES-310-A
Acetylcholine (Muscarinic)	M1	CHO-K1	ES-210-A
Acetylcholine (Muscarinic)	M5	CHO-K1	ES-214-A
Adenosine	A _{2B}	HEK293	ES-013-A
Adenosine	A ₃	CHO-K1	ES-012-A
Adrenergic	α1d	CHO-K1	ES-038-A
Adrenergic	α2a	CHO-K1	ES-030-A
Beta Alanin	TGR7	CHO-K1	ES-741-A
Bombesin	BB1	CHO-K1	ES-581-A
Bradykinin	B2	CHO-K1	ES-090-A
Cannabinoid	CB1	CHO-K1	ES-110-A
Chemokine	CCR6	CHO-K1	ES-139-A
Chemokine	CCR10	CHO-K1	ES-143-A
Chemokine	CXCR2	CHO-K1	ES-145-A
Formyl Pept	FPRL1	CHO-K1	ES-610-A
Galanin	GAL2	CHO-K1	AX-001-PCF
Histamine	H ₂	CHO-K1	ES-391-A
Kiss-1 (Metastin)	GPR54	CHO-K1	ES-630-A
Leukotriene	BLT1 (LTB4 R1)	CHO-K1	ES-340-A
Leukotriene	CysLT1	CHO-K1	ES-470-A
Lysophospholipid	S ₁ P ₄ (Edg6)	CHO-K1	ES-592-A
Lysophospholipid	S ₁ P ₅ (Edg8)	CHO-K1	ES-593-A
Melanin Concentrating Hormone	MCH2	CHO-K1	ES-371-A
Melatonin	MT1	CHO-K1	ES-620-A
Neuromedin U	NMU-2R (FM4)	CHO-K1	ES-451-A
Neuropeptide 5	NGPCR/NPSR	CHO-K1	ES-770-A
Prokineticin	PKR1	CHO-K1	ES-750-A
Relaxin	RXFP3	CHO-K1	ES-656-A
Somatostatin	sst5	CHO-K1	ES-522-A
Thyrotropin Releasing Hormone	TRH ₁	CHO-K1	ES-700-A

IF YOU HAVE A FLIPR – TRY OUR CELL LINES TODAY!

Visit www.perkinelmer.com/GPCRcomplete to learn about our complete GPCR offering or for easy access to the on-line cell line and membrane prep selector.

Tissue culture treated and PDL-coated microplate ordering information

Product	Quantity (Packaging)	Catalog No.
PDL-coated ViewPlate-96, black, clear bottom, 96-well	40 (8 bags, 5 each)	6005710
	2 (individually pouched)	6005711
PDL-coated ViewPlate-384, black, clear bottom, 384-well	40 (2 bags, 20 each)	6007710
	160 (8 bags, 20 each)	6007718
	2 (individually pouched)	6007711
PDL-coated ViewPlate-1536, black, clear bottom, 1536-well	10 (2 bags, 5 each)	6004710
	1 (individually pouched)	6004711
ViewPlate-384, untreated, white, clear bottom, 384-well	5	6007491
	40	6007490
ViewPlate-384 TC, tissue culture treated, white, clear bottom, sterile, 384-well with lid	3	6007481
	40	6007480
ViewPlate-384 F, untreated, black, clear bottom, 384-well	5	6007471
	40	6007470
ViewPlate-384 F TC, tissue culture treated, black, clear bottom, sterile, 384-well with lid	3	6007461
	40	6007460
ViewPlate-1536, untreated, white, clear bottom, LoBase, 1536-well	2	6004491
	60	6004490
ViewPlate-1536 TC, tissue culture treated, white, clear bottom, LoBase, 1536-well with lid	2	6004481
	40	6004480
ViewPlate-1536 F, untreated, black, clear bottom, LoBase, 1536-well	2	6004471
	60	6004470
ViewPlate-1536 F TC, tissue culture treated, black, clear bottom, sterile, LoBase, 1536-well with lid	2	6004461
	40	6004460

Questions, please contact:

Name

Email

Phone

PerkinElmer, Inc.
 940 Winter Street
 Waltham, MA 02451 USA
 Phone: (800) 762-4000 or
 (+1) 203-925-4602
www.perkinelmer.com



For a complete listing of our global offices, visit www.perkinelmer.com/ContactUs

©2009 PerkinElmer, Inc. All rights reserved. The PerkinElmer logo and design are registered trademarks of PerkinElmer, Inc. PhotoScreen is a trademark and AequoScreen, LumiLux, OptiPlate and ViewPlate are registered trademarks of PerkinElmer, Inc. or its subsidiaries, in the United States and other countries. FLIPR and FLIPR^{TETRA} are registered trademarks of MDS Analytical Technologies. Photina is a registered trademark of Axxam. All other trademarks not owned by PerkinElmer, Inc. or its subsidiaries that are depicted herein are the property of their respective owners. PerkinElmer reserves the right to change this document at any time without notice and disclaims liability for editorial, pictorial or typographical errors.