

*Leica*

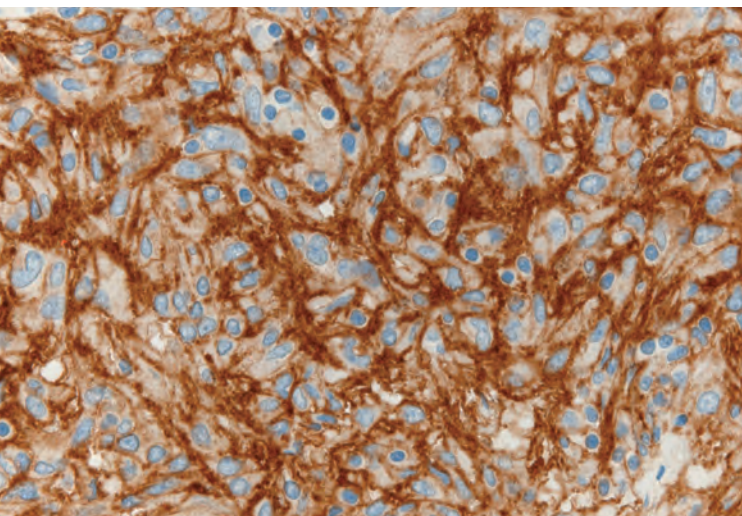
BIOSYSTEMS

# Leica BOND-MAX

## Fully automated IHC & ISH

Quality. Efficiency. Agility.





# Difficult questions require accurate and precise answers.

When a patient is waiting anxiously, fully automated immunohistochemistry (IHC) and in situ hybridization (ISH) helps with quality staining for timely results and diagnostic confidence. It's how modern histology laboratories deliver better patient care.

## ›QUALITY

Increase diagnostic confidence

## ›EFFICIENCY

Help more patients and lower costs

## ›AGILITY

Quickly adapt to new challenges and opportunities

### CONNECT

Reduce work and potential errors. Leica BOND-MAX connects to common LIS systems and the Leica CEREBRO sample tracking system as well as an unlimited number of BOND instruments.

- › Leica BOND LIS-ip
- › Leica CEREBRO

### SELECT

Choose the ideal reagents. Access the full range of exceptional Novocastra™ antibodies and probes or select third-party antibodies.

- › Novocastra BOND RTU reagents
- › Leica BOND Polymer Refine Detection
- › Open primaries

### REFINE

Unrivalled service and support. Leica Biosystems' IHC & ISH scientific experts help with applications knowledge, LEAN workflow analysis, preventative maintenance and instrument support.

- › Applications advice
- › LEAN support
- › Flexible maintenance contracts

Human gastrointestinal tract. Immunohistochemical staining of gastrointestinal stromal tumor (GIST) for DOG-1. Stained using Novocastra DOG-1 for BOND (PA0219, Clone K9) with BOND Polymer Refine Detection™ (DS9800).

# Quality

Leica BOND-MAX helps you create diagnostic confidence. With full automation reducing repeats and standardizing staining, pathologists receive high-quality slides that help ensure patients get accurate answers.

## TOTAL TISSUE CARE

---

The BOND Covertile™ system protects patient tissue with very gentle reagent application and incubation protection to help you minimize tissue damage and repeats.

## CLARITY AND ACCURACY

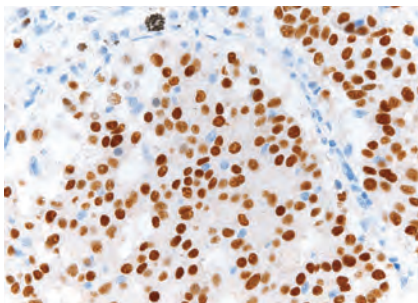
---

Deliver high-quality staining with BOND reagents. These pre-optimized reagents deliver exceptional automated IHC & ISH performance that consistently scores highly on EQA schemes throughout the world.

## COMPLETE CONSISTENCY

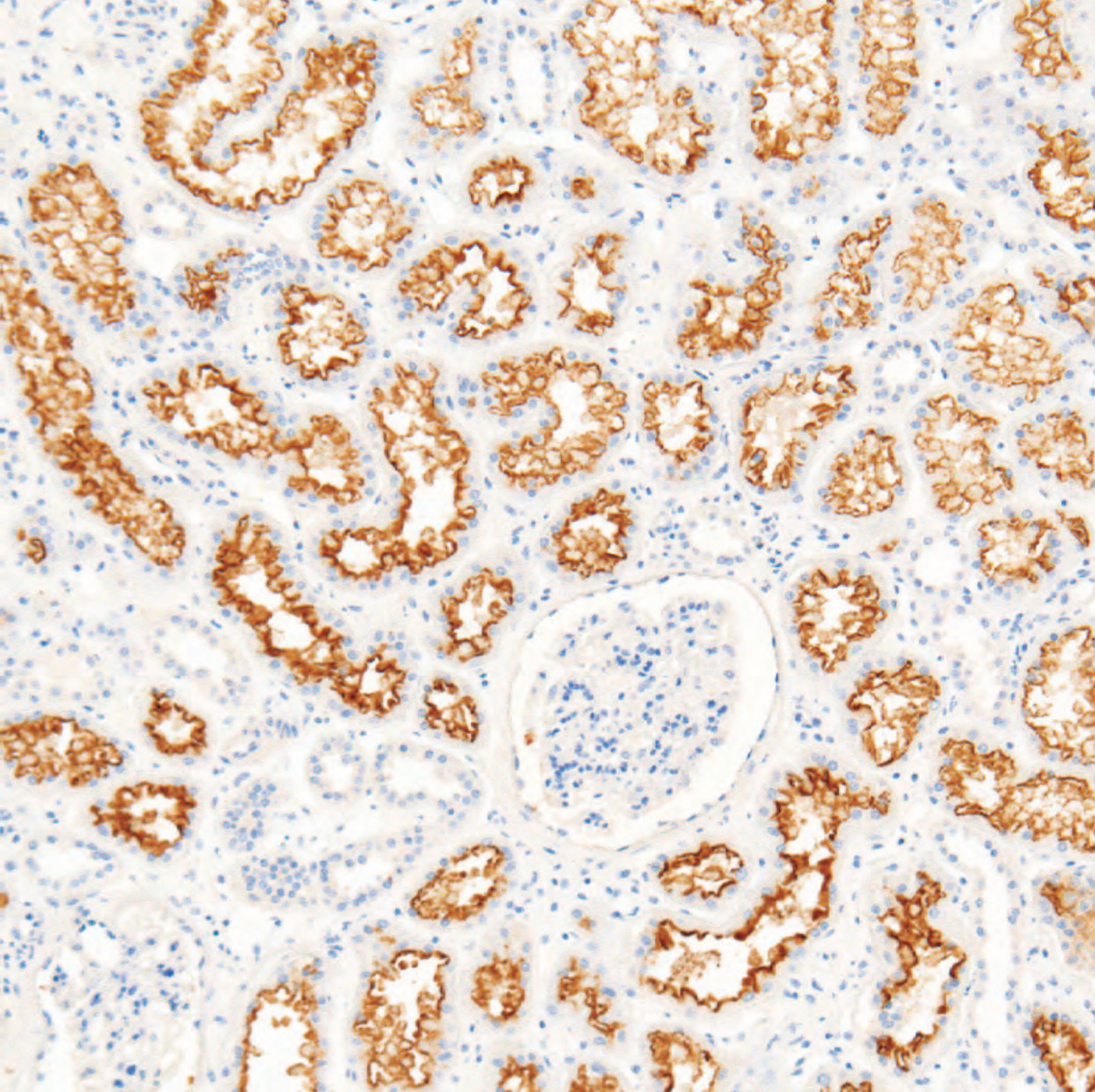
---

Leica BOND-MAX provides complete on-board IHC & ISH automation that removes process variation to help you deliver the consistent staining pathologists expect.



**Left.** Human lung. Immunohistochemical staining of malignant pulmonary carcinoma cells for thyroid transcription factor 1. Stained using Novocastra Thyroid Transcription Factor-1 for BOND (PA0364, Clone SPT24) with BOND Polymer Refine Detection™ (DS9800).

**Right.** Human kidney cortex. Immunohistochemical staining of proximal tubular brush border. Stained using Novocastra Renal Cell Carcinoma Marker (NCL-RCC, Clone 66.4.C2) with BOND Polymer Refine Detection™ (DS9800).



*Increase diagnostic confidence.*



# Efficiency

Increase efficiency, eliminate bottlenecks and reduce backlogs. Leica BOND-MAX has the flexibility and organization to promote Lean workflows so your laboratory can stain more slides in less time.

## EASY TO RUN

---

Keep your work flowing by eliminating complexity. Leica BOND-MAX runs are quickly configured and ready-to-use reagents reduce preparation work to simply scan, load, press play and walk away.

## CONTINUOUS

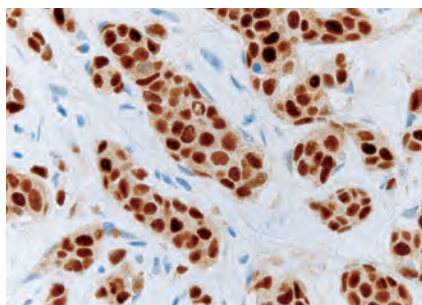
---

With three independent slide trays, each Leica BOND-MAX is effectively three stainers in one instrument. So you have the flexibility of continuous processing while keeping your slides together to reduce sorting.

## ALWAYS READY

---

Quickly process urgent slides. Continuous processing means a spare tray is never far away, while ready-to-use reagents eliminate preparation work – just load and run.



Human breast. Immunohistochemical staining of carcinoma for estrogen receptor. Stained using Novocastra Estrogen Receptor for BOND (PA0151, Clone 6F11) with BOND Polymer Refine Detection™ (DS9800).



*Help more patients and  
lower costs.*



# Agility

Quickly adapt to new opportunities. It's easy to introduce Leica BOND-MAX into any laboratory environment. With a small foot print, lower costs and widespread industry acceptance, Leica BOND-MAX helps you react quickly when you have new opportunities or challenges.

## COMPACT SIZE

---

With a small footprint and benchtop mounting, Leica BOND-MAX will fit easily into most existing laboratory layouts to negate the need for extensive remodeling or large areas of dead space.

## EFFICIENT RESOURCE ALLOCATION

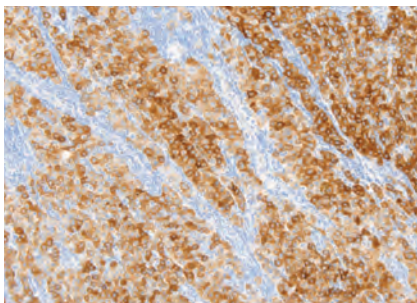
---

You don't need a large throughput to justify high-quality, fully automated IHC & ISH. By focusing on quality and efficiency, while eliminating functionality you don't need, Leica BOND-MAX frees financial resources.

## READY NOW

---

Leica BOND-MAX is a proven industry performer. The availability of trained operators plus Leica support and ready-to-use reagents means even a laboratory new to fully automated IHC & ISH can consistently deliver high-quality staining.



Human skin. Immunohistochemical staining of malignant melanoma cells for melanoma marker. Stained using Novocastra HMB45 (Melanoma Marker) for BOND (PA0027, Clone HMB45) with BOND Polymer Refine Detection™ (DS9800).





*Quickly adapt to new challenges and opportunities.*



# System Specifications

## QUALITY

### Covertile technology

Unlike other systems, Leica BOND instruments are gentle on the tissue and ensure total tissue care with exceptionally low dispense and waste volumes.

### Optimized BOND reagents

A full range of Novocastra BOND reagents provides the ideal match of consistent quality and effortless workflow.

## EFFICIENCY

### Continuous processing

Leica BOND-MAX is effectively three independent stainers in one instrument – the ideal balance of flexibility and organization.

## AGILITY

### Leica BOND control center

A single source for operation and reporting for an unlimited number of Leica BOND instruments plus LIS and sample tracking connectivity.

### Small footprint center

With benchtop mounting and a small footprint, Leica BOND-MAX easily fits into tight laboratory spaces.



## SYSTEM SPECIFICATIONS

Dimensions	760 mm (W) x 703 mm (H) x 775 mm (D) 29.9 in (W) x 27.6 in (H) x 30.5 in (D)
Weight (dry)	120 kg 265 lb.
Slide capacity	30 Finished trays (10 slides) may be replaced continuously
Reagent container capacity	7 mL and 30 mL
Number of reagent containers	36
Bulk reagent container capacity	1 L or 2 L
Hazardous waste container capacity	2 L
External Bulk waste container capacity	9 L
Operating voltage	103.4 V~ to 127.2 V~ (for nominal voltage 110 V~ to 120 V~) or 206.8 V~ to 254 V~ (for nominal voltage 220 V~ to 240 V~)

Mains frequency	50/60 Hz
Power consumption	1000 VA
Maximum operating temperature	35 °C 95 °F
Minimum operating temperature	5 °C 41 °F
Temperature required to meet staining performance requirements	18–26 °C 64–79 °F
Operating humidity (noncondensing)	10 to 80% RH
Operating altitude	0 to 1600 m (5250 ft.) above sea level
Sound pressure level output (at 1 m)	< 85 dBA maximum < 65 dBA normal operation



LEICA  
BOND-MAX

*Leica*



### TOTAL HISTOLOGY SOLUTIONS

High-quality IHC and ISH staining depends upon expert tissue preparation and sectioning. With a broad range of histology instruments, consumables and applications knowledge, Leica Biosystems offers research-specific histology solutions that will help you efficiently prepare high-quality sections for advanced staining.

- Tissue preparation
- Sample identification and tracking
- Tissue processors, cassettes and paraffin wax
- Embedding centers, accessories and paraffin wax
- Microtomes, blades and slides
- Coverslippers, mountants and coverslips
- Microscopy and imaging solutions
- Expert service and support
- Ongoing maintenance support

### LEICA BIOSYSTEMS

Leica Biosystems is a global leader in workflow solutions bringing histopathology laboratories and researchers the highest quality, most comprehensive product range in anatomical pathology. With complete histology systems featuring innovative automation, Novocastra™ reagents and Surgipath® consumables, Leica Biosystems offers the ideal product for each histology step and high-productivity workflow solutions for the entire laboratory.

Leica Biosystems – an international company with a strong network of worldwide customer services:

#### North America Sales and Customer Support

North America	800 248 0123
---------------	--------------

#### Asia/Pacific Sales and Customer Support

Australia	1800 625 286
China	+85 2 2564 6699
Japan	+81 3 5421 2804
South Korea	+82 2 514 65 43
New Zealand	0800 400 589
Singapore	+65 6779 7823

#### Europe Sales and Customer Support

For detailed contact information about European sales offices or distributors please visit our website.

**Leica Biosystems brings together products, quality and support. Offering a complete solution that helps you advance workflows, enhance diagnostic clarity and deliver what really matters – better patient care.**



Scan this tag and use your smart phone to find out more about Leica Biosystems Total IHC and ISH Solutions.